

Emergency Housing Grants | Apr 2025

Emergency housing is short-term accommodation (usually in motels) for individuals who have an urgent need because they are unable to remain in their usual place of residence. Clients may be eligible for an Emergency Housing Grant if they cannot access accommodation and we have explored all the other options available to them. Grants can cover between one and 21 nights of accommodation at a time.



MINISTRY OF SOCIAL
DEVELOPMENT
TE MANATŪ WHAKAHIATO ORA

Amount granted

Apr 2025

\$3.2M

\$0.5M fewer than last month

Monthly Emergency
Housing Grants

1,176

162 fewer than last month

Households in
emergency housing
as at 30 April

453

6 fewer than last month

Adults in emergency
housing as at 30 Apr

495

3 fewer than last month

Children in emergency
housing as at 30 Apr

396

3 more than last month

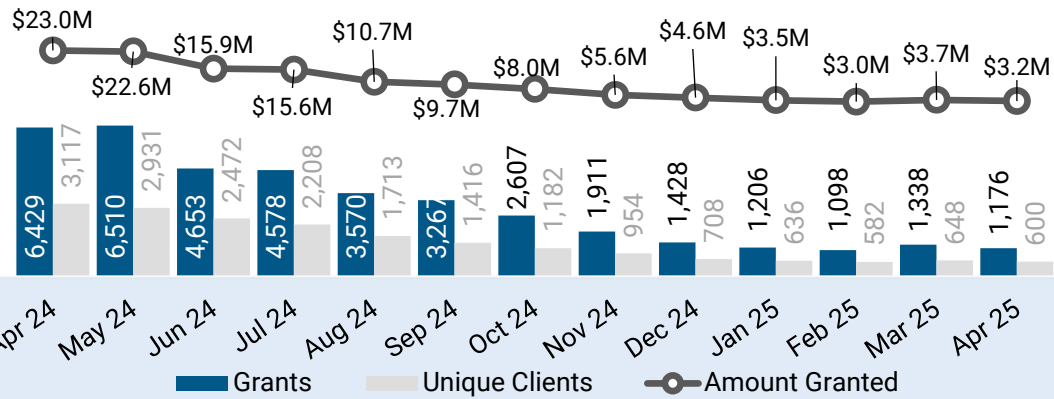
Households with
children in EH for
12 weeks+ as at
30 April

30

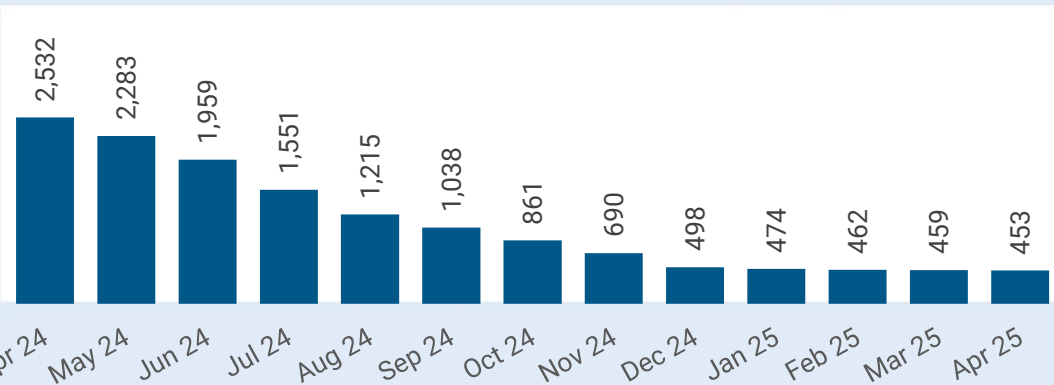
3 more than last month

Emergency housing – over the month and historic numbers

1 Grants/clients/amount granted over each month



2 Number of households in emergency housing – as at the end of each month



Commentary

There were 453 households in emergency housing (EH) as at the end of April 2025, nearly the same as in the previous month. However, this is a large drop of 82% from the same time last year, when there were 2,532 households in EH.

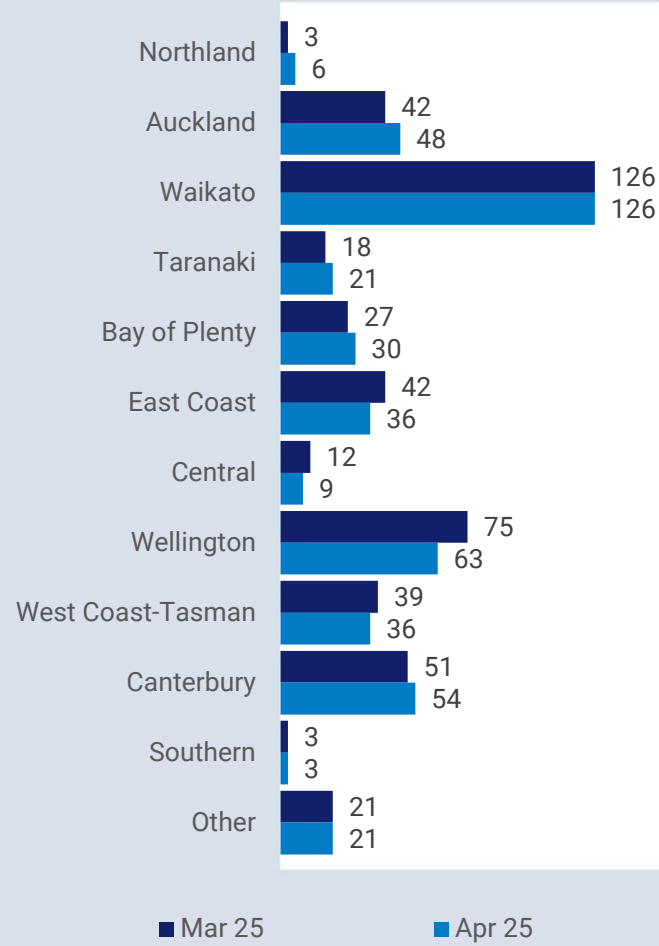
In three regions, the number of households in EH fell from March 2025 to April 2025. The largest fall was in Wellington with 12 or 16% fewer households. The other regions with month-on-month decreases in EH were East Coast and Central.

As at the end of April 2025, the number of children in EH was 396, relatively unchanged from the previous month.

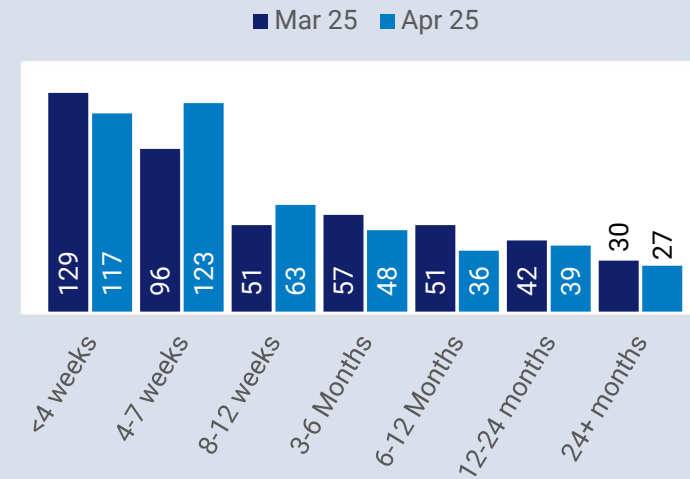
Note: Households living in Contracted Emergency Housing (CEH) in Rotorua are not included in this reporting. The new model is being piloted in Rotorua. Reporting of the number of households in CEH is currently unavailable. Random rounding has been applied to these figures. Figures in tables may not add up to the total due to random rounding.

Emergency housing – at the end of the month

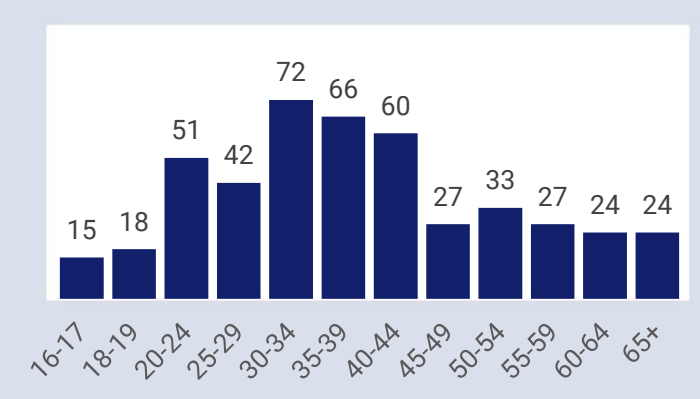
3 Households in emergency housing by MSD region – as at end of the month



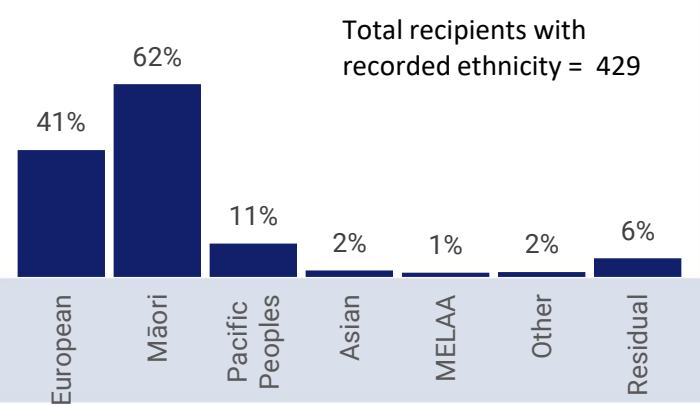
4 Households by duration in emergency housing – as at end of the month



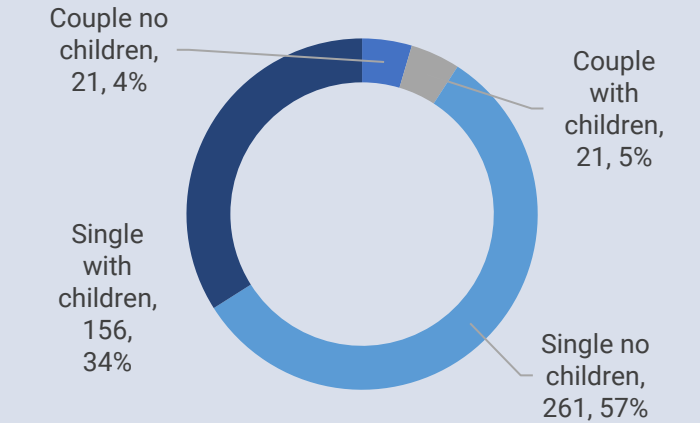
5 Age distribution of primary applicants in emergency housing – as at end of the month



6 Ethnicity* of primary applicant in emergency housing – as at end of the month



7 Household composition – as at end of the month



Social Housing Register | 30 Apr 2025

The Social Housing Register is a non-time bound list of all applicants eligible to be placed in social housing. Applicants complete a social housing assessment which determines eligibility and priority for social housing against an agreed set of criteria, which is then used to assist the social housing provider in matching to the most appropriate property.



As at 30 Apr 2025

Housing Register

19,089

219 fewer than last month

Transfer Register*

4,545

36 fewer than last month

Social Housing Register

23,634

252 fewer than last month

New applications that entered the Social Housing Register

1,776

108 fewer than last month

Housed in social housing

780

177 fewer than last month

Priority One Fast Track

Live on Register

60

Housed in Apr 25

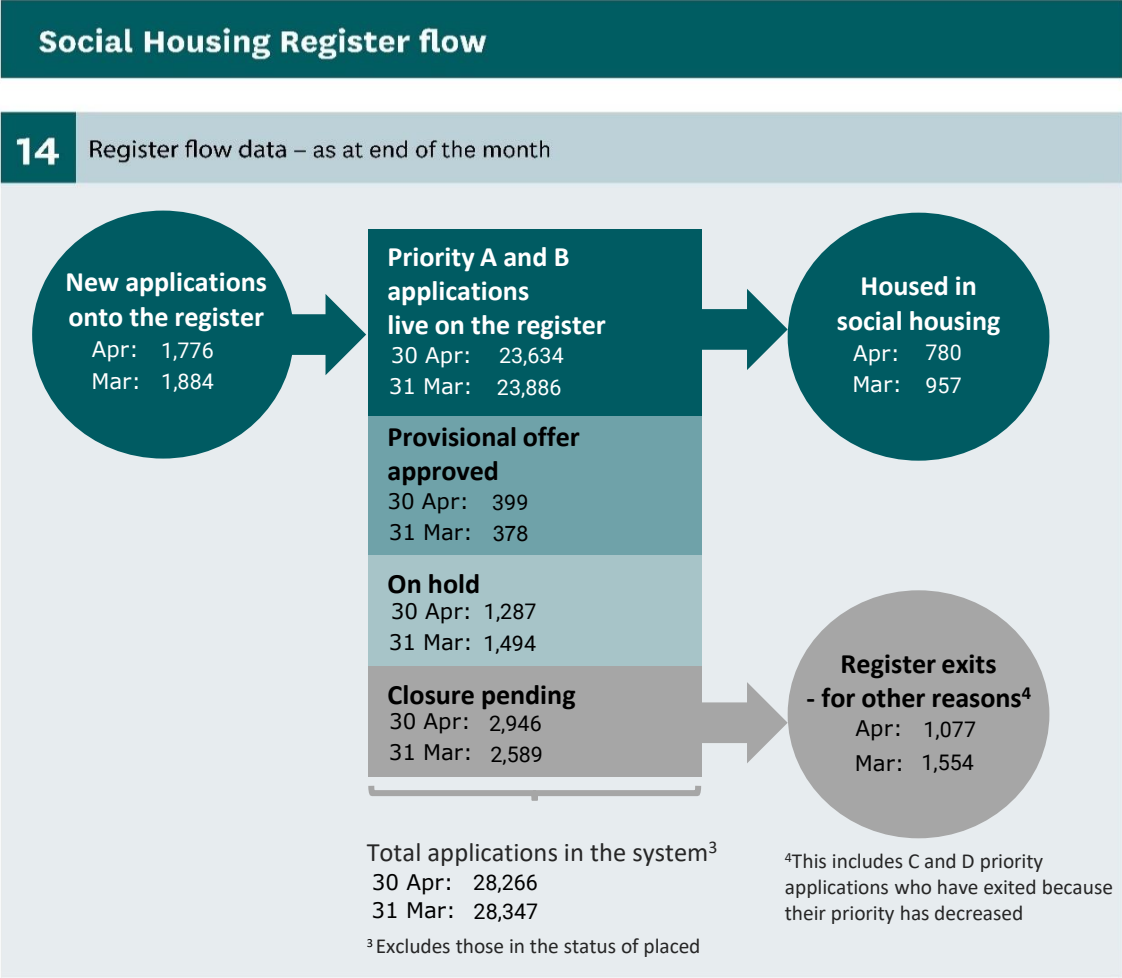
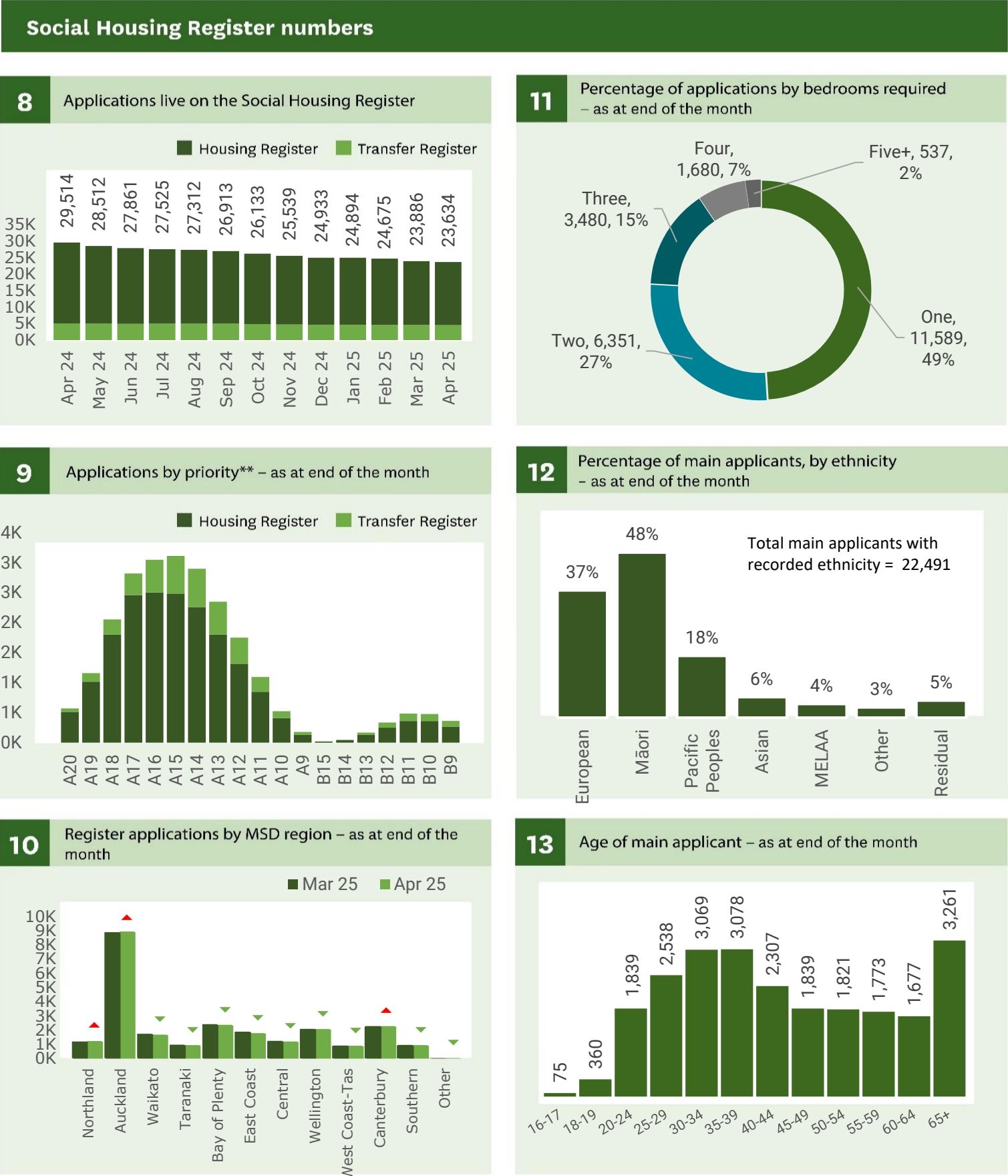
24

Housed since May 24

996

Children housed since May 24

2,124



Commentary

From March 2025 to April 2025, the number of applications on the Social Housing Register fell by 108 or 6%.

The number of applications on the Social Housing Register fell in most regions. The largest month-on-month percentage fall was in East Coast, down by 6%.

This decrease is partly because of fewer new applications entering onto the Register.

**Graph 9 – Info on the SAS criteria used to determine eligibility and priority can be found here:
www.workandincome.govt.nz/map/social-housing/assessment-of-eligibility/index.html

*People who already live in social housing, but have applied and are eligible to transfer to another property are placed on the Transfer Register.

Random Rounding has been applied to these figures. Figures in tables may not add up to the total due to random rounding.

[†]MSD reports total response ethnicity. This means if a person identifies with more than one ethnic group, they are counted in each applicable group and the sum of responses for all ethnic groups may exceed 100%. For more information www.msd.govt.nz/about-msd-and-our-work/tools/how-we-report-ethnicity.html. Note, MELAA refers to Middle Eastern, Latin American, and African.