

APPENDIX D – EXAMPLES OF TRACE FUNCTIONS ACROSS SCALE CONTINUUM

In Chapter 5 item analysis was used to examine the properties of individual items. For illustrative purposes, an example of the functions that were used to make decisions about the suitability of the items is presented here. Two examples are presented. The first is for an item which was regarded as meeting the set criteria (a good pair of shoes); the second is for an item that did not meet the criteria (dishwasher).

A good pair of shoes

Figure D1: Importance Ratings for a good pair of shoes: Māori, non-Māori, population

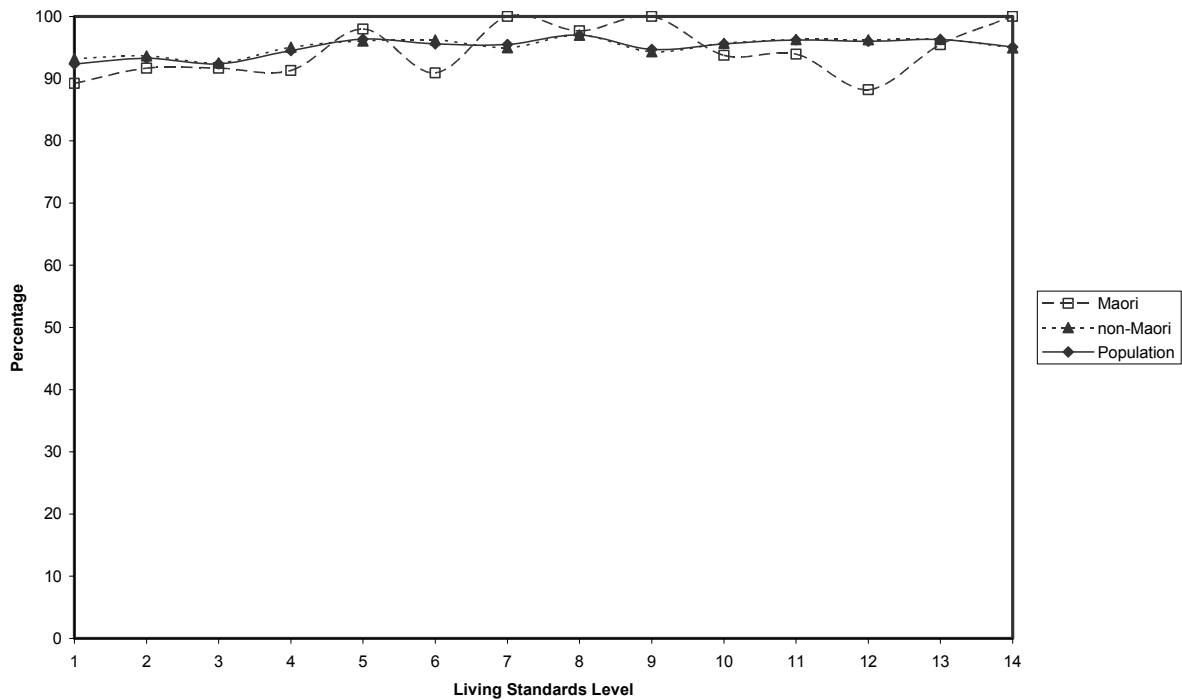


Figure D2: Importance Ratings for a good pair of shoes: Single persons, couples, population

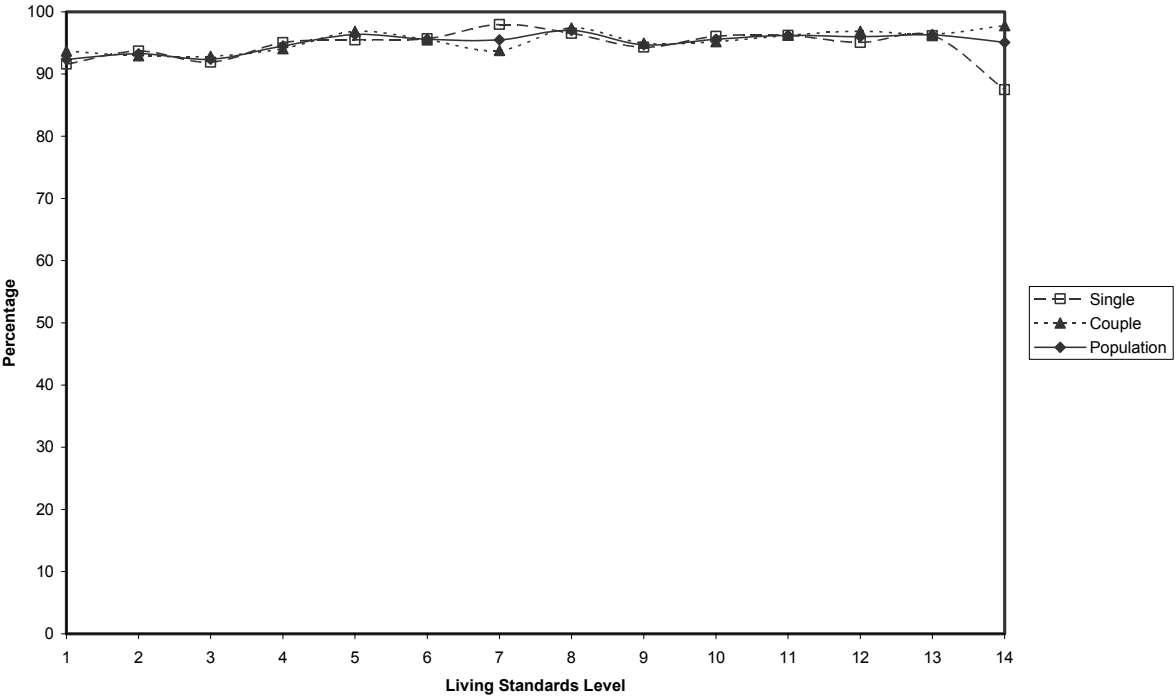


Figure D3: Importance Ratings for a good pair of shoes: with dependent children, without dependent children, population

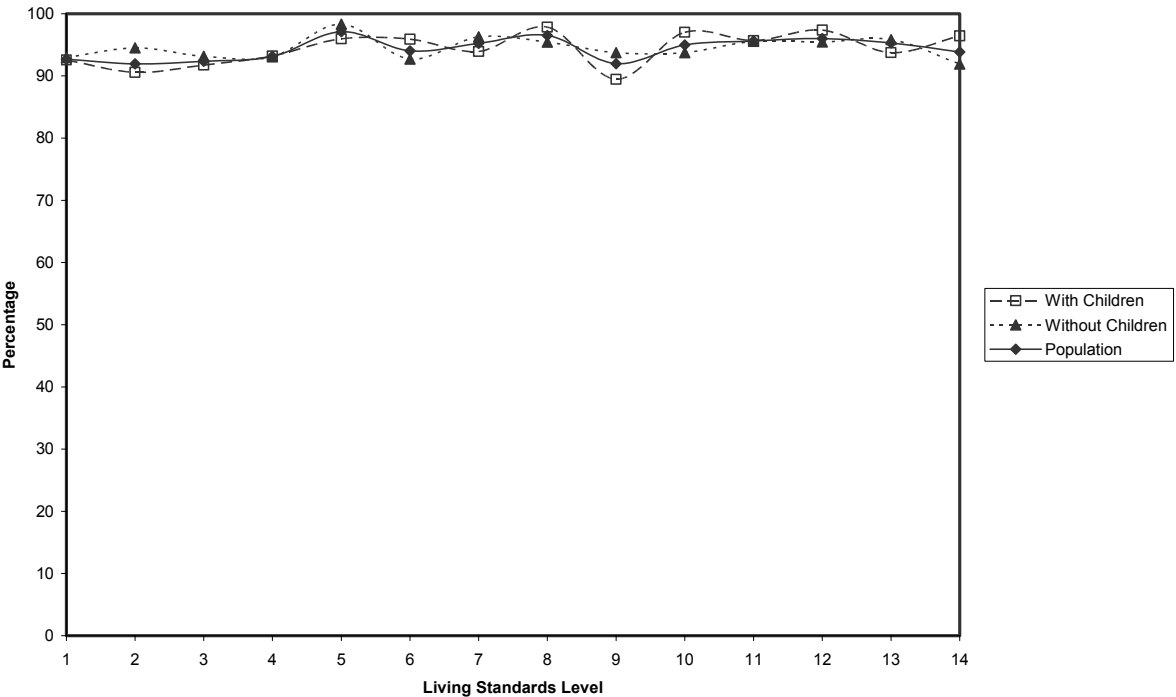


Figure D4: Importance Ratings for a good pair of shoes: age 18 to 64, 65 and over, population

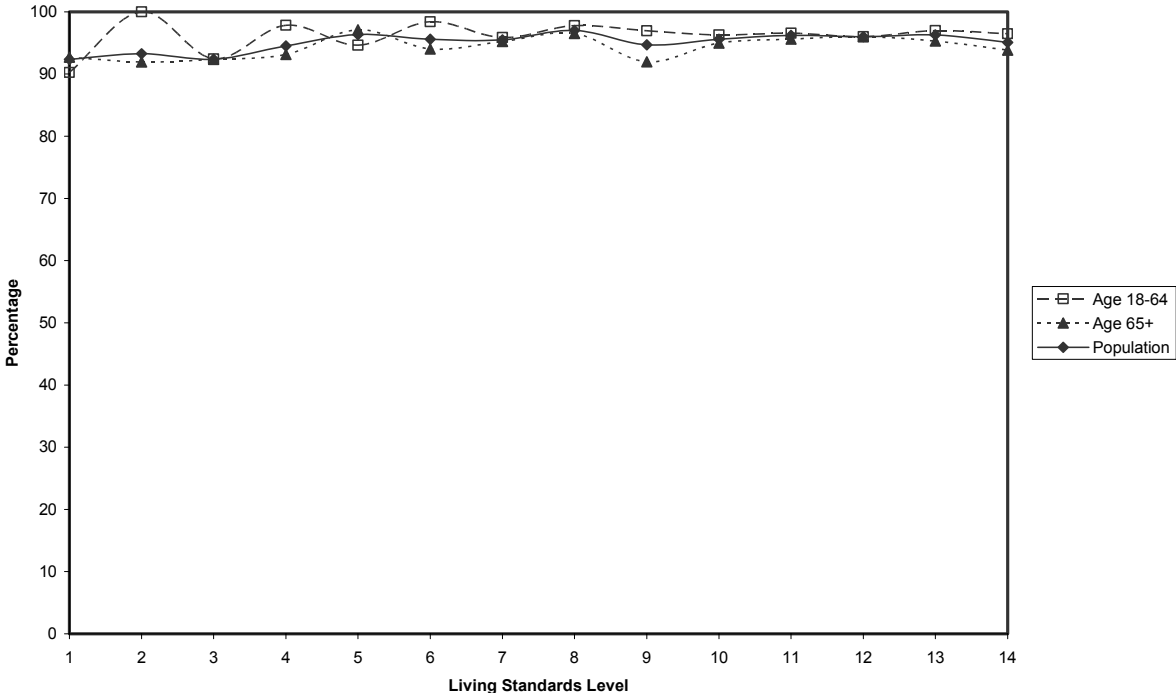
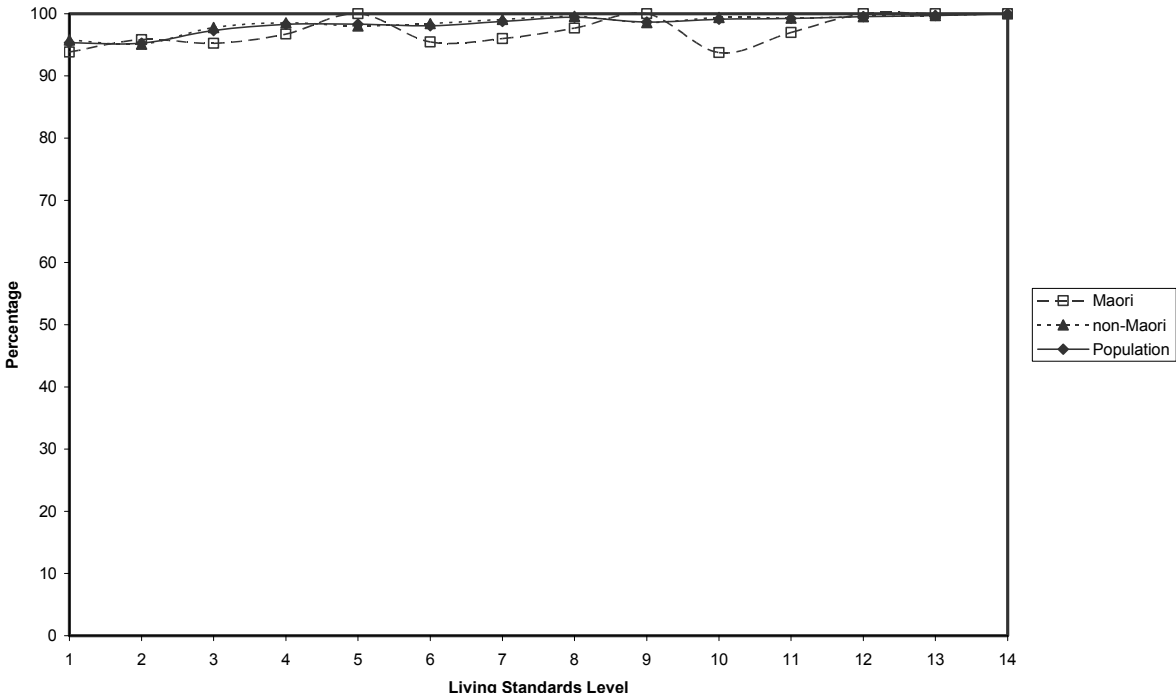


Figure D5: Proportion wanting²⁵ good pair of shoes: Māori, non-Māori, population



²⁵ Note that 'wanting an item' is operationally defined as either having the item or having an enforced lack of an item.

Figure D6: Proportion wanting good pair of shoes: Single person, couples, population

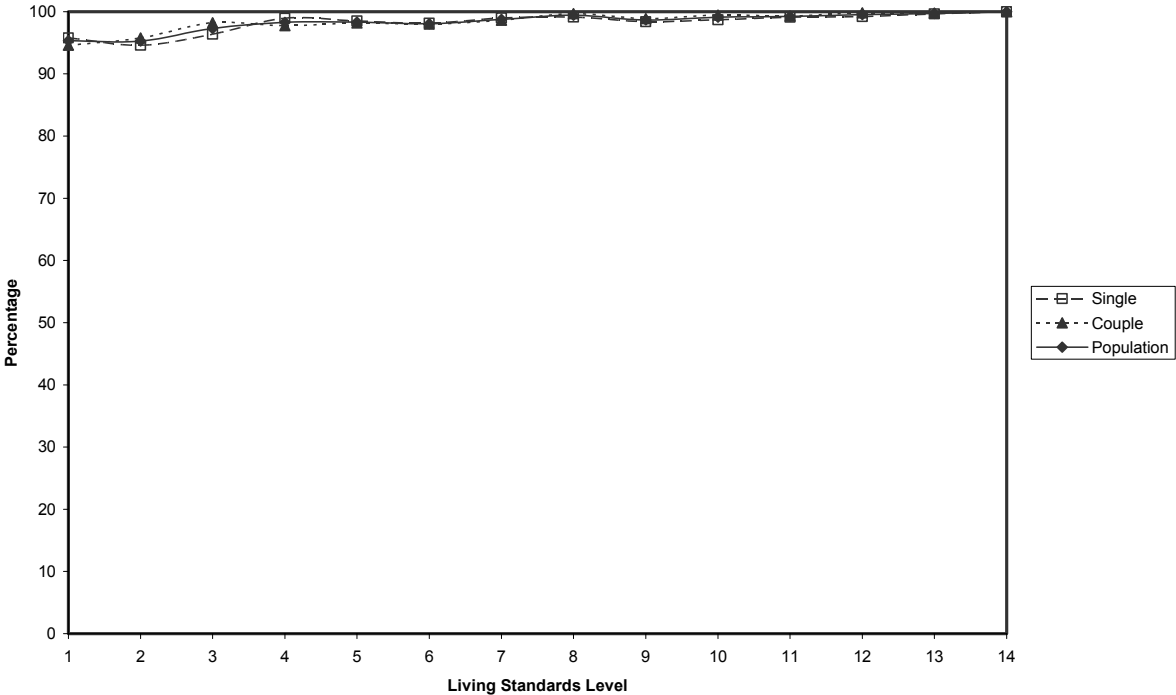


Figure D7: Proportion wanting good pair of shoes: with dependent children, without dependent children, population

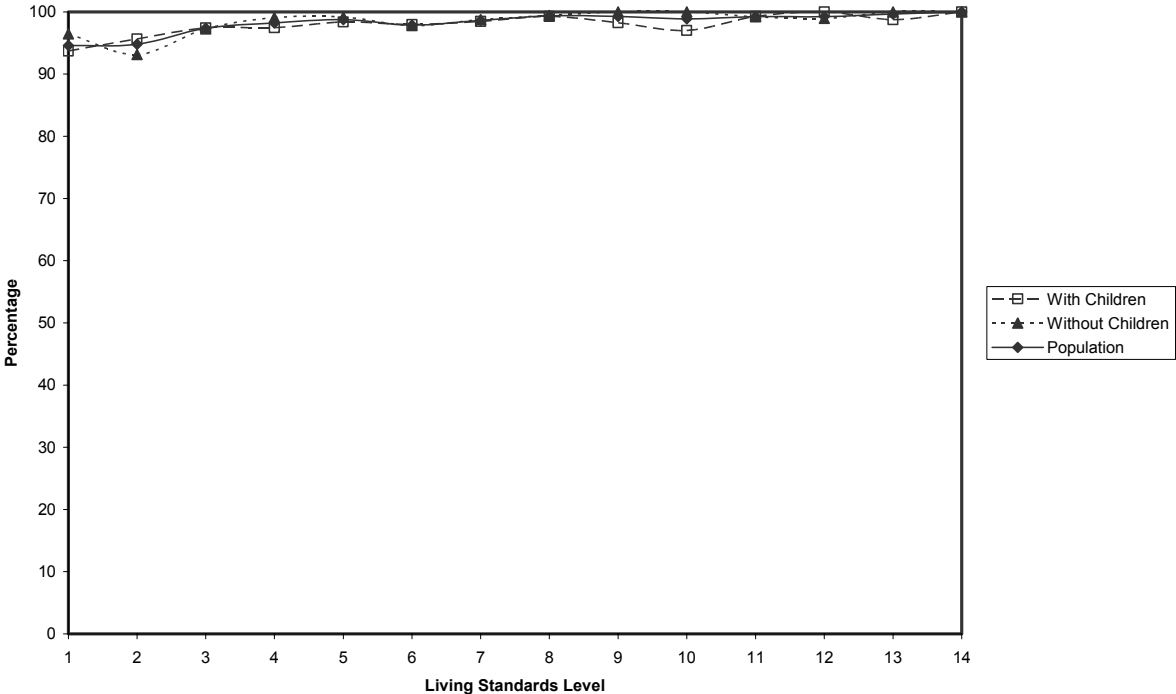


Figure D8: Proportion wanting good pair of shoes: age 18 to 64, 65 and over, population

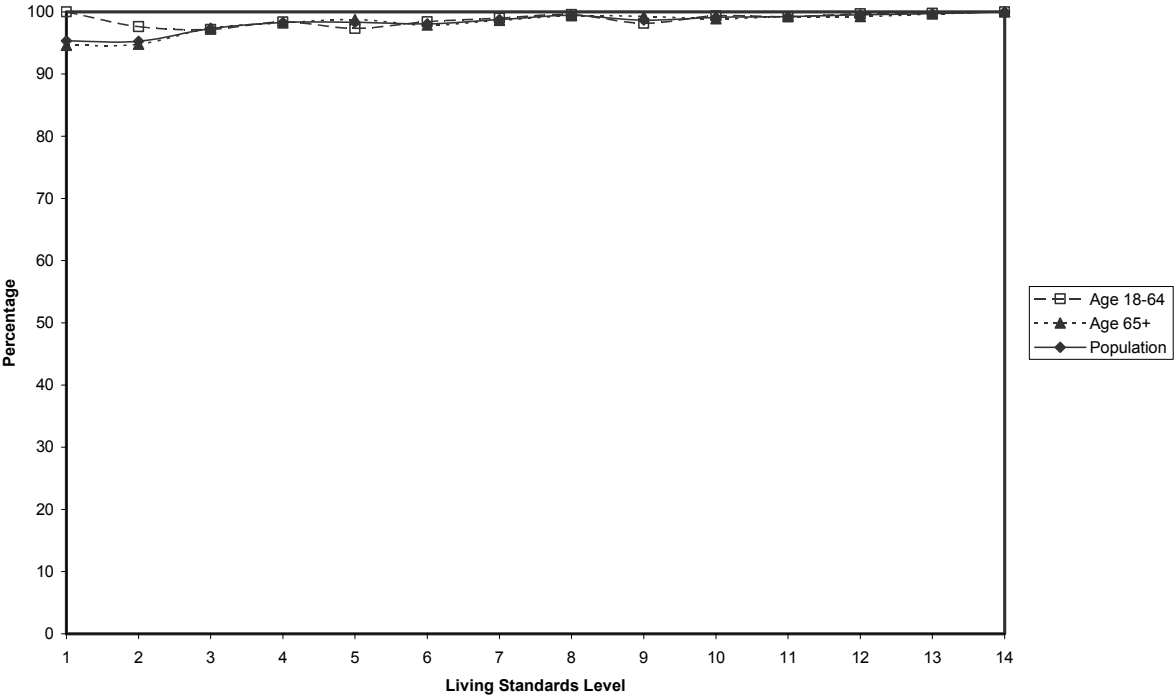


Figure D9: Enforced lack of good pair of shoes: Māori, non-Māori, population

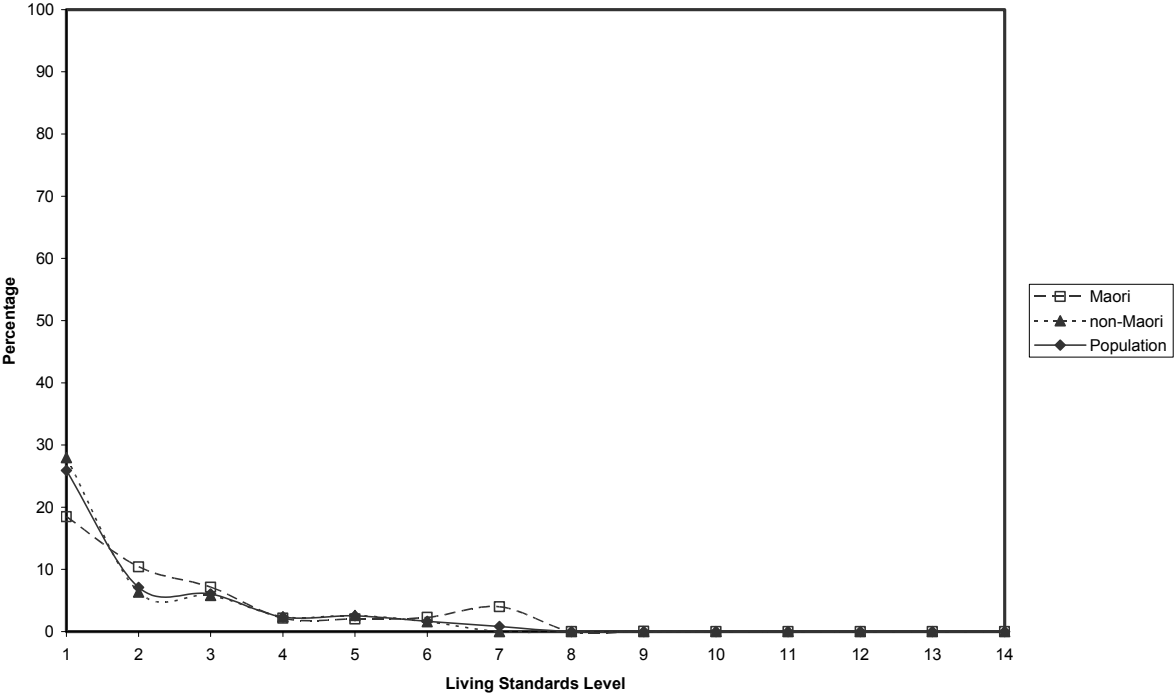


Figure D10: Enforced lack of good pair of shoes: single persons, couples, population

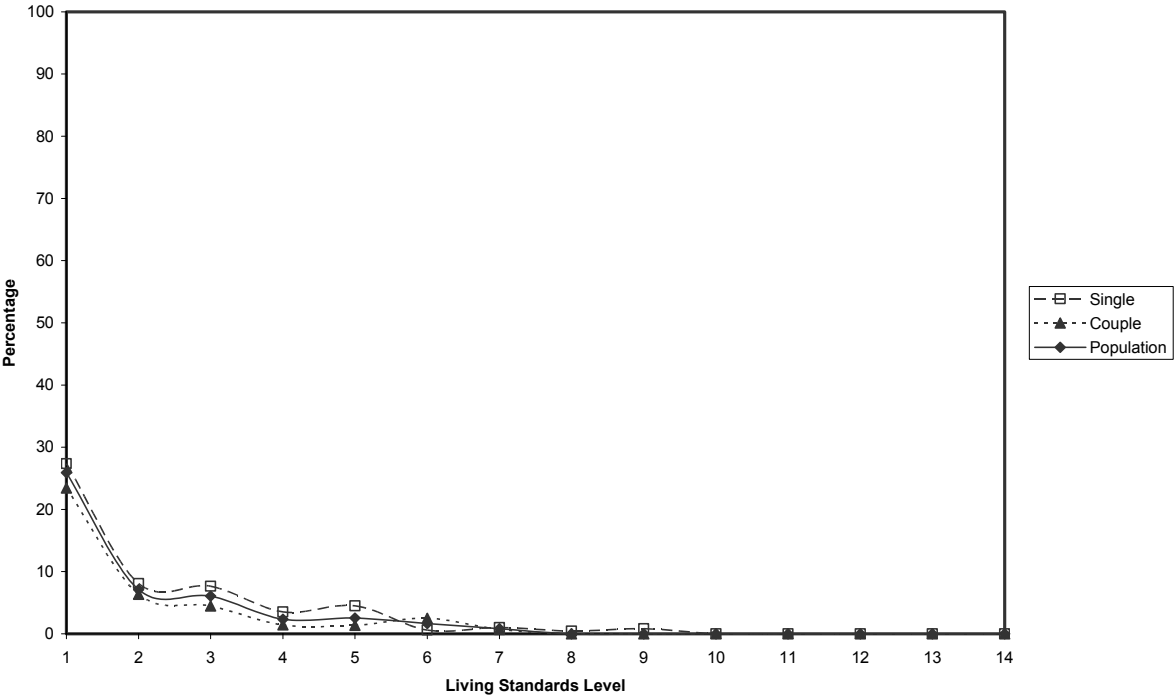


Figure D11: Enforced lack of good pair of shoes: with dependent children, without dependent children, population

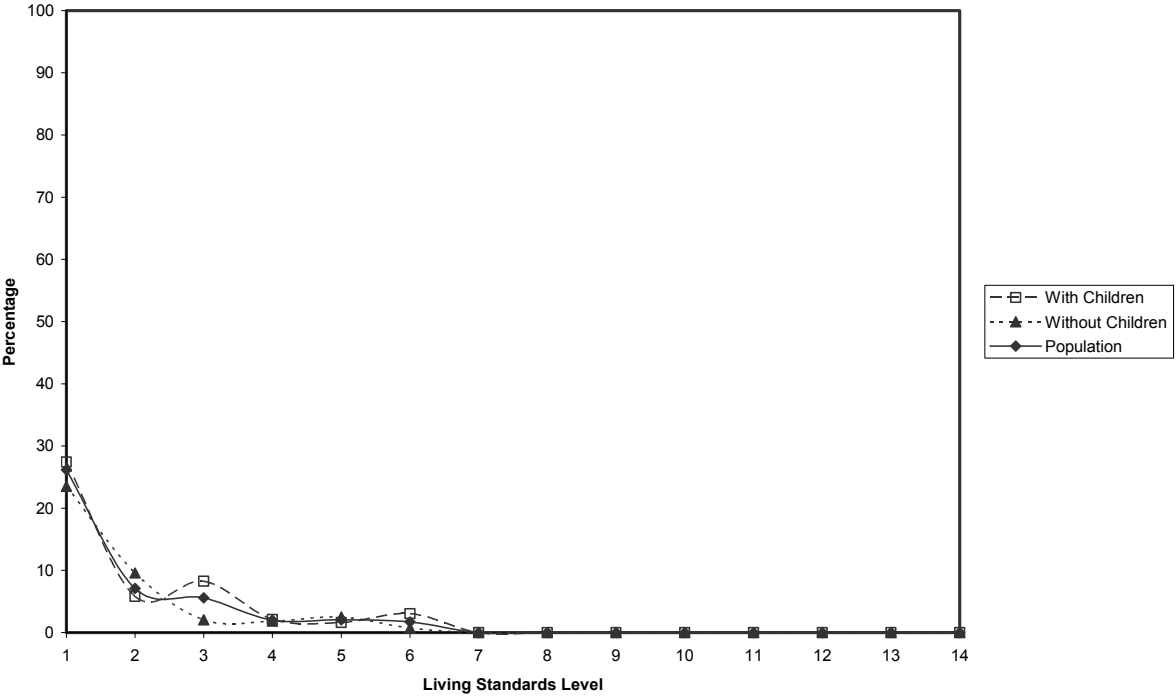
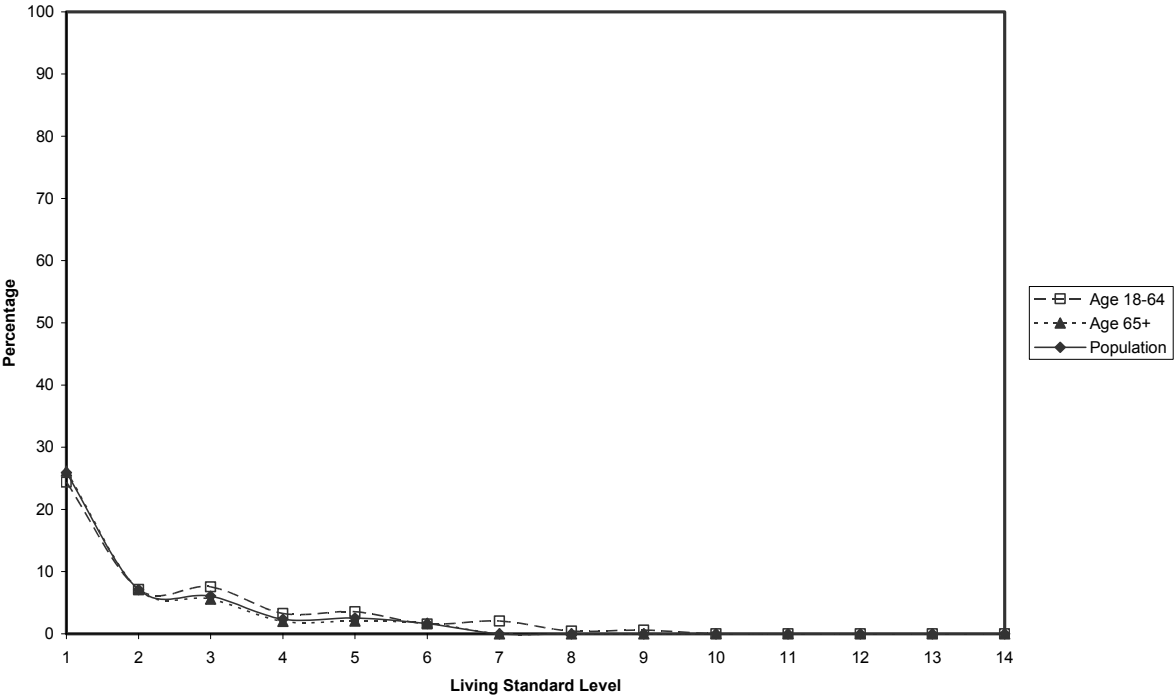


Figure D12: Enforced lack of good pair of shoes: age 18 to 64, 65 and over, population



Dishwasher

Figure D13: Importance Ratings for dishwasher: Māori, non-Māori, population

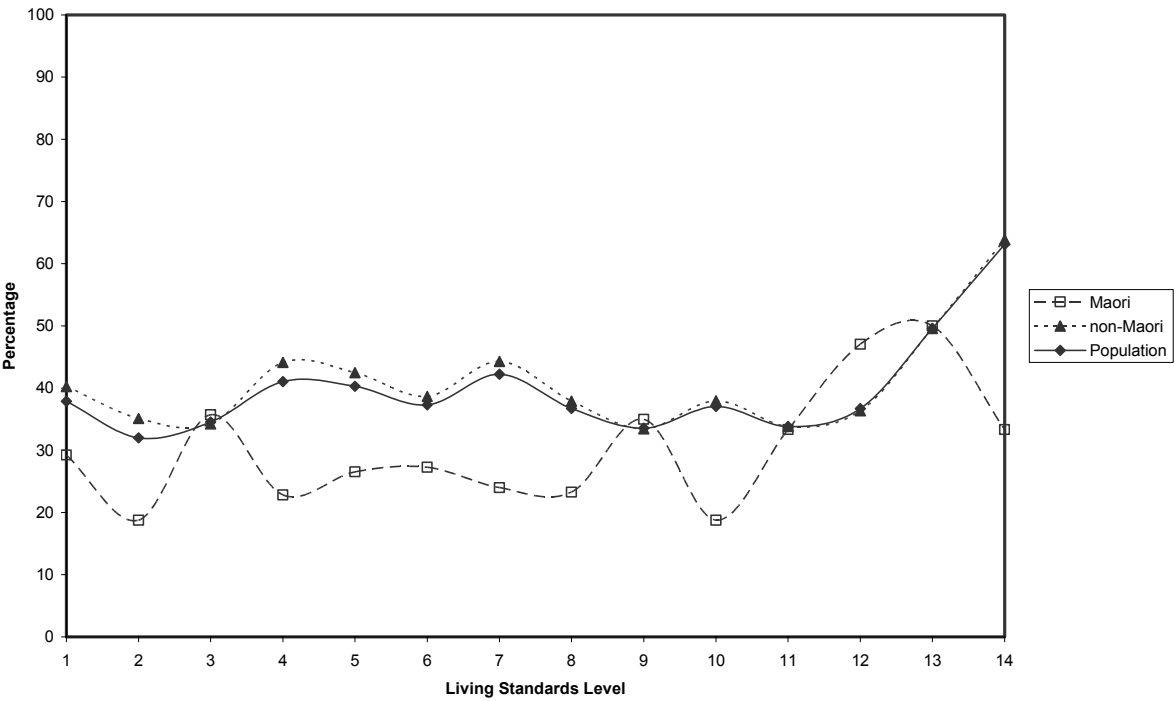


Figure D14: Importance Ratings for dishwasher: single persons, couples, population

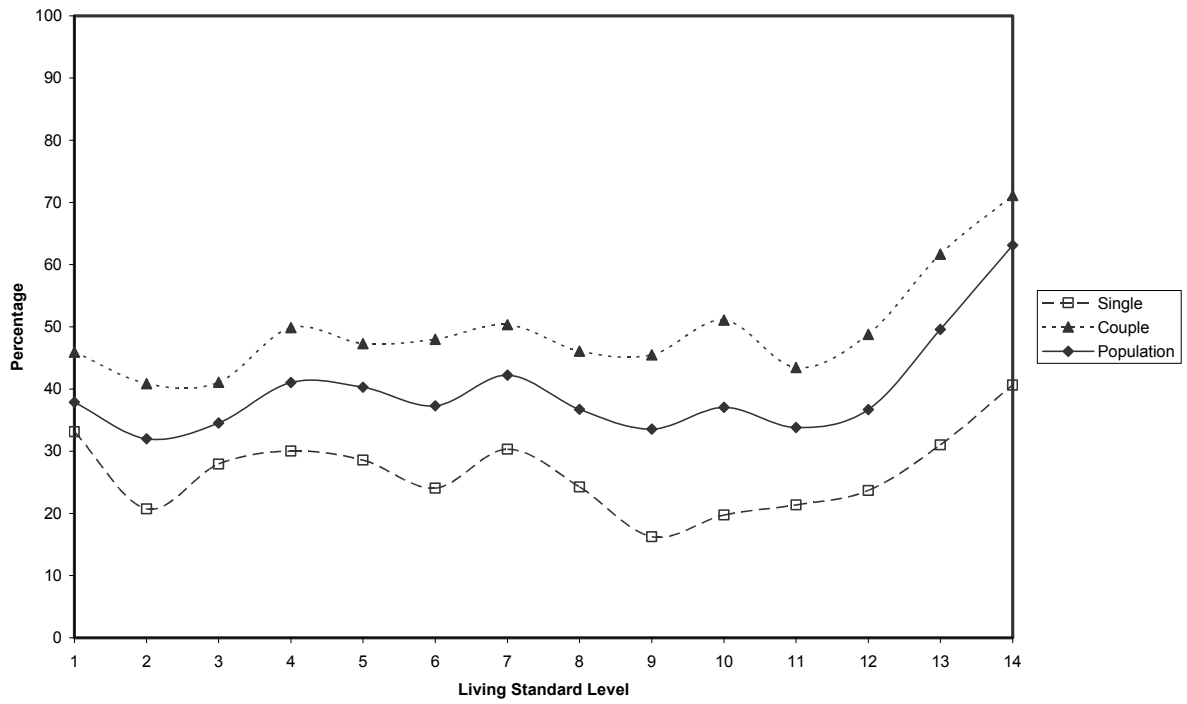


Figure D15: Importance Ratings for dishwasher: with dependent children, without dependent children, population

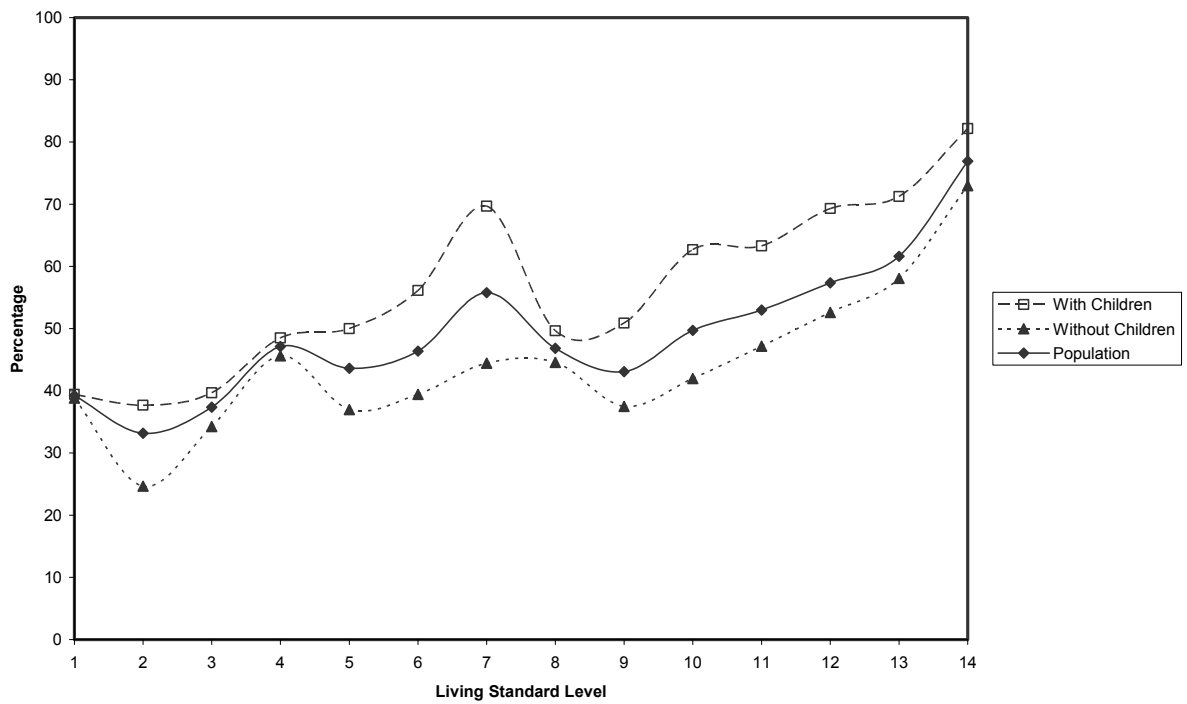


Figure D16: Importance Ratings for dishwasher: age 18 to 64, 65 and over, population

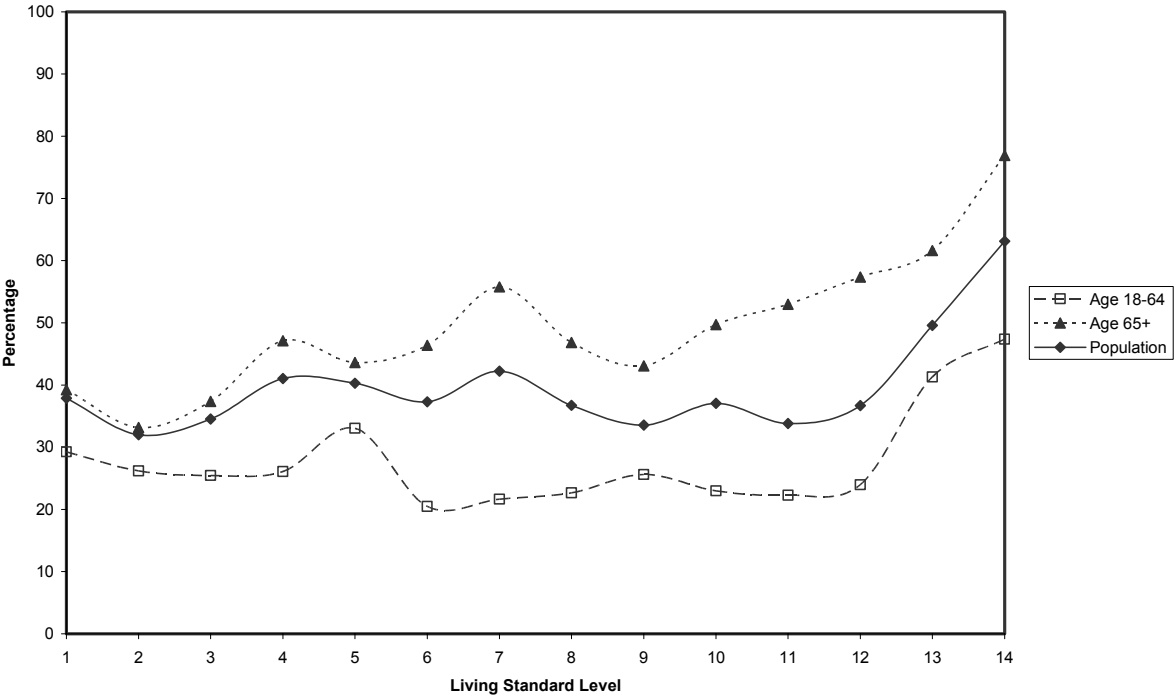


Figure D17: Proportion wanting dishwasher: Māori, non-Māori, population

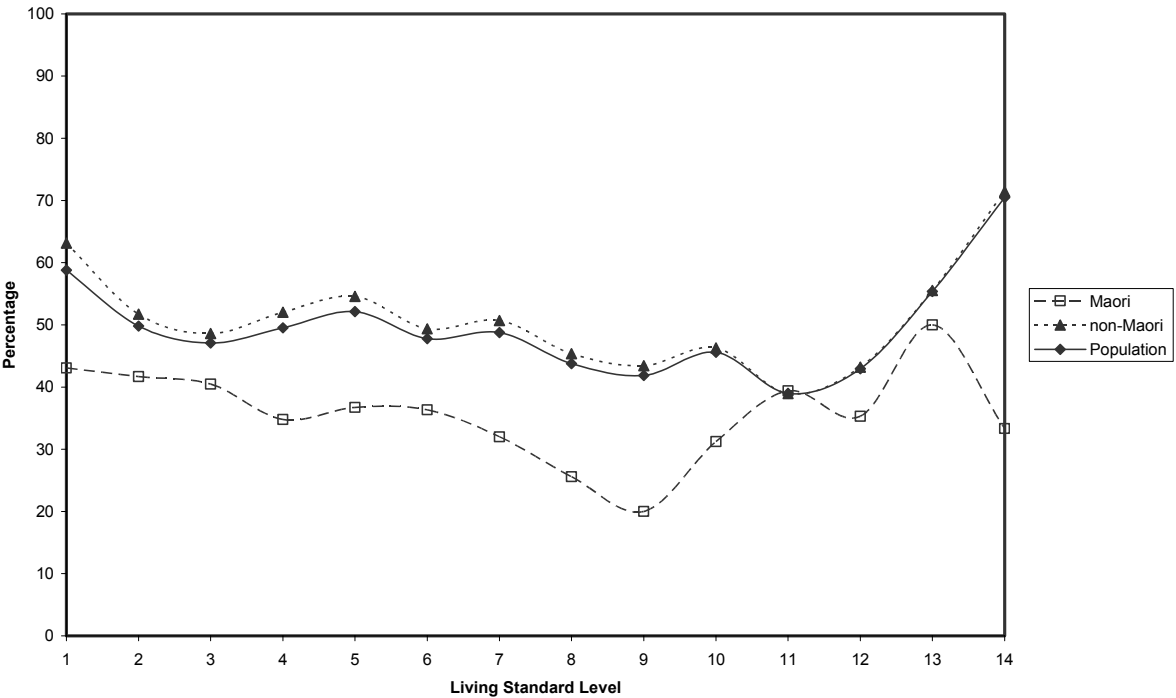


Figure D18: Proportion wanting dishwasher: single persons, couples, population

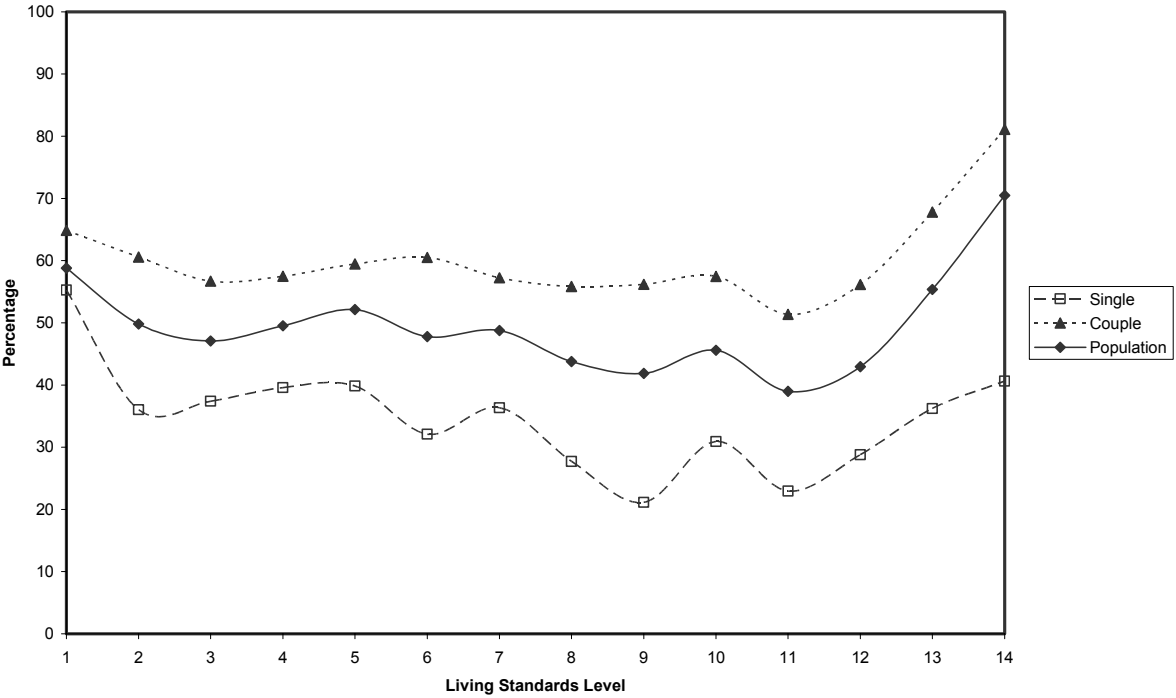


Figure D19: Proportion wanting dishwasher: with dependent children, without dependent children, population

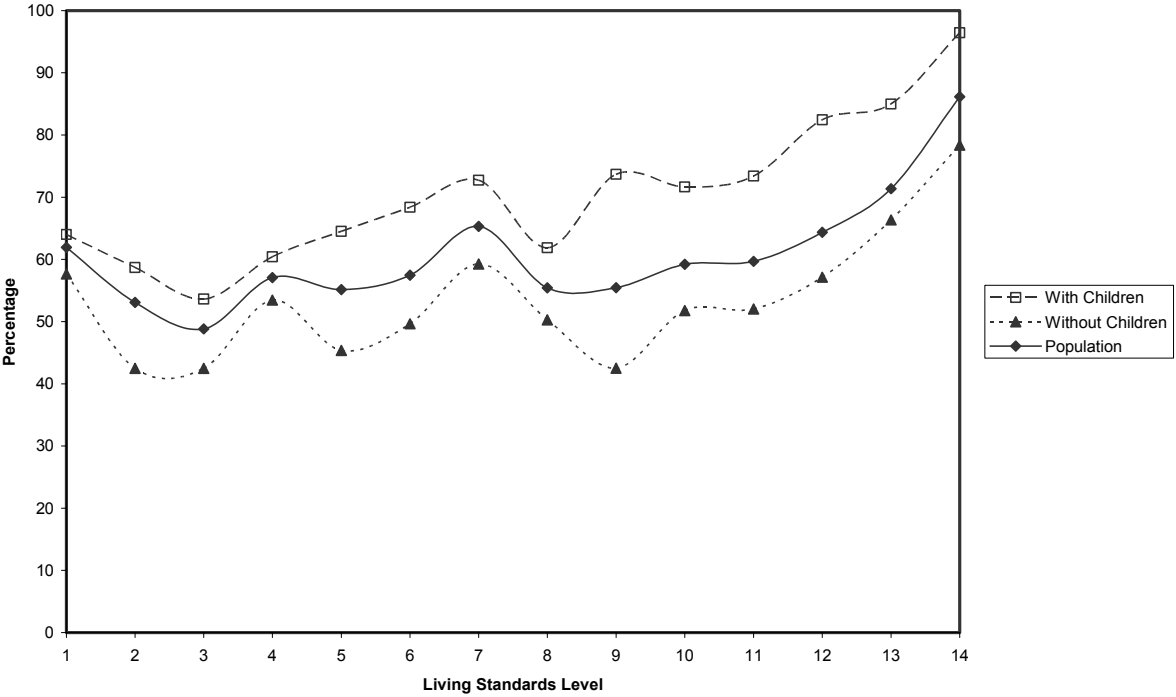


Figure D20: Proportion wanting dishwasher: age 18 to 64, 65 and over, population

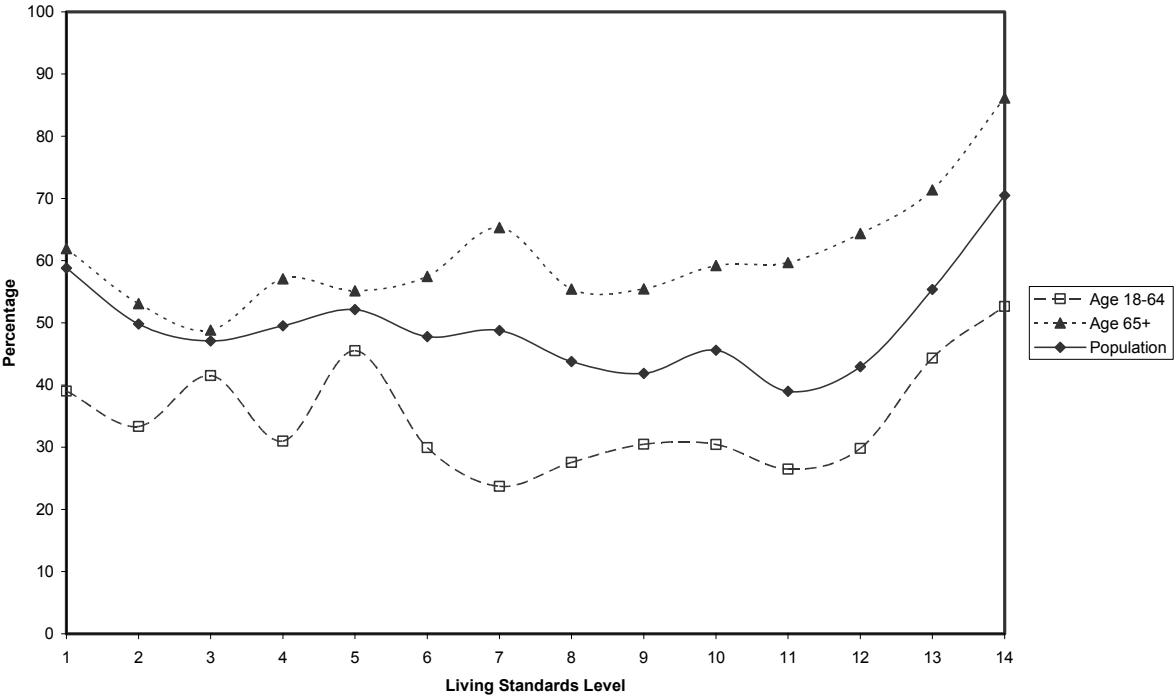


Figure D21: Enforced lack of dishwasher: Māori, non-Māori, population

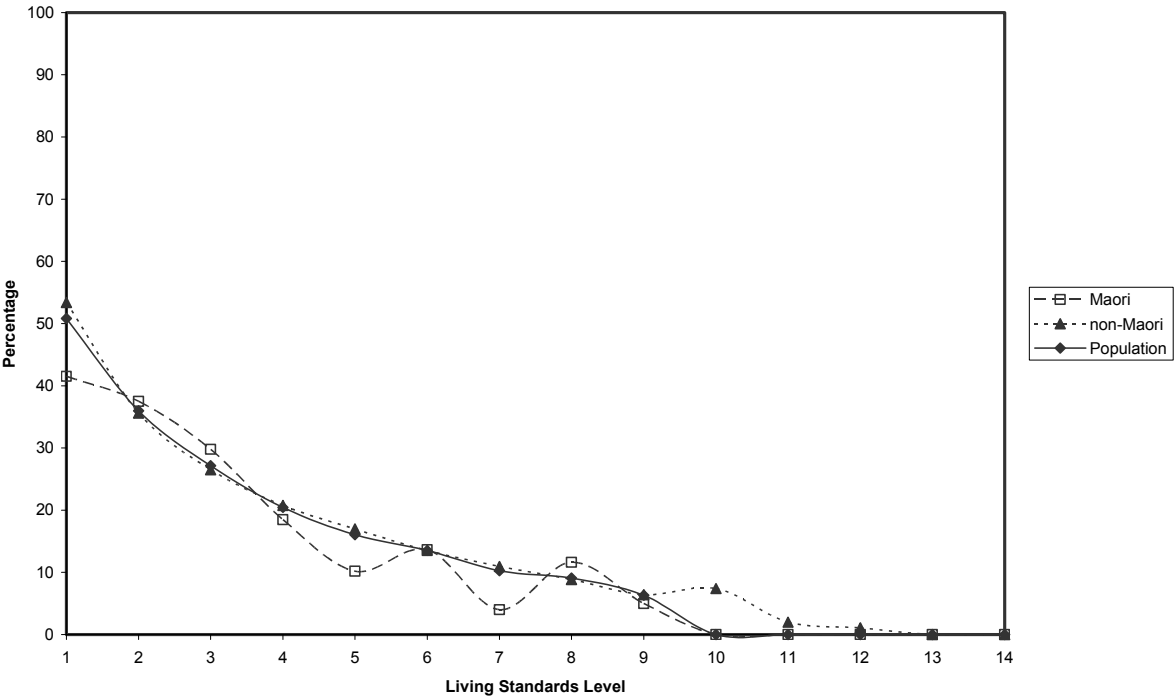


Figure D22: Enforced lack of dishwasher: single persons, couples, population

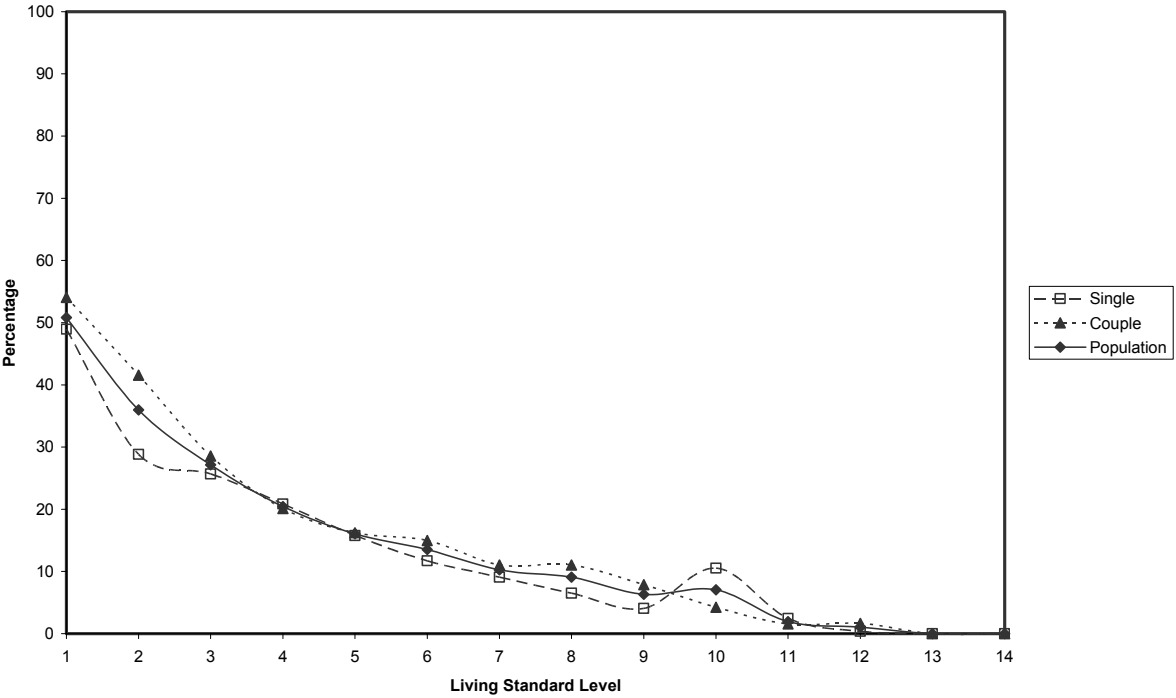


Figure D23: Enforced lack of dishwasher: with dependent children, without dependent children, population

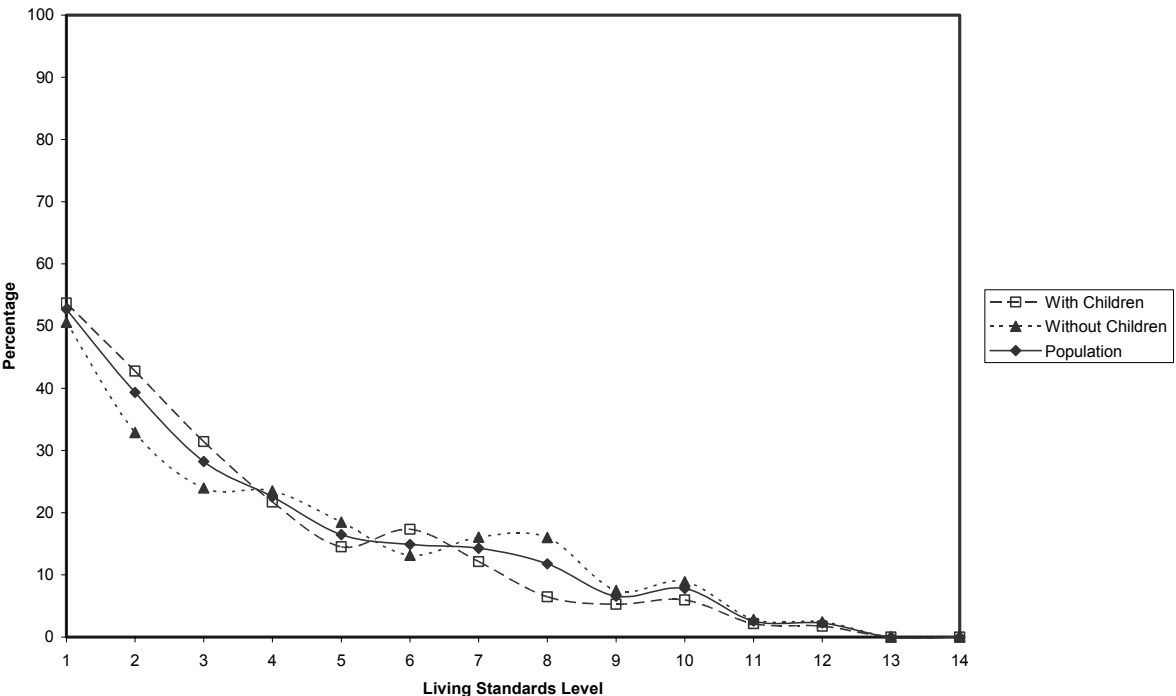


Figure D24: Enforced lack of dishwasher: age 18 to 64, 65 and over, population

