



2024/25 Annual Report on the Child and Youth Wellbeing Strategy and previous Child Poverty Related Indicators

July 2024 to June 2025

Contents

Purpose of report	2
Summary of findings	3
Previous Child Poverty Related Indicators	
Reduced food insecurity	4
Improved housing quality	5-6
Previous strategy indicators	
Outcome 1	7-8
Outcome 2	9-11
Outcome 3	12-14
Outcome 4	15-16
Outcome 5	17-18
Outcome 6	19-20
Data notes	21-24

This report sits alongside a companion report *2024/25 Annual Report on the Child and Youth Strategy and Child Poverty Related Indicators* which is available on the [Ministry of Social Development website here](#).

Purpose of report

The Child and Youth Wellbeing Strategy (the previous Strategy) was in place from August 2019 to October 2024. This covers part of the 2024/25 financial year.

This report sets out progress towards the outcomes of the previous Strategy for the 2024/25 financial year. It also covers progress on the previous set of Child Poverty Related Indicators (CPRIs), which are a set of indicators that measure the broader causes, correlates and consequences of child poverty.

The report is used by the Government and agencies to monitor progress towards the outcomes of the previous Strategy and CPRIs. It can also be used by a range of other groups to understand what experiences children and young people are having, measure progress towards the Strategy outcomes, and inform responses at a national or local level.

Requirements under the Children’s Act 2014 and Child Poverty Reduction Act 2018

The Children’s Act 2014 requires the government to report annually on progress towards achieving the Strategy’s outcomes. The Child Poverty Reduction Act 2018 requires the government to report annually on the CPRIs.

This report, alongside the companion report *2024/25 Annual Report on the Child and Youth Strategy and Child Poverty Related Indicators*, fulfills both requirements for 2024/25.

Identified populations of children and young people

Where available, this report includes disaggregated data on Māori children and young people, Pacific children and young people, disabled children and young people, and children and young people in disabled households.

Ethnicity data includes a mix of total response ethnicity and prioritised ethnicity. This is noted in the relevant data notes. A disabled household is defined as a household with at least one disabled person in the household.

Child and Youth Wellbeing Strategy Indicators Overview

The Child and Youth Wellbeing Strategy set out 34 indicators that helped assess progress towards achieving the six wellbeing outcomes for children and young people. Across the indicators, there were 53 measures.

Not all measures have data available or updated each year. This report includes data from the relevant baseline year, the most recent previous year of data and the most recent year of data. Data for the other measures can be found in the [2023/24 Annual Report](#) and [2022/23 Annual Report](#).

Previous Child Poverty Related Indicators (CPRIs)

The previous Strategy indicators include the previous CPRIs.

The five previous CPRIs are set out in the table below.

CPRIs	Measures	Data Sources	Status as a CPRI
Food insecurity	Percentage of children (aged 0-14 years) living in households reporting food runs out often or sometimes	Ministry of Health New Zealand Health Survey	No longer a CPRI
Housing affordability	Percentage of children living in households in the bottom 40% of income distribution, spending more than 30% of household income on housing costs	Stats NZ Household Economic Survey and Household Income and Living Survey	Current CPRI
Housing quality	Percentage of children and young people (aged 0-17 years) living in households with a major problem with dampness or mould	Stats NZ Household Economic Survey and Household Income and Living Survey	No longer a CPRI
Student attendance	Percentage of students present more than 90% of the term	Ministry of Education Attendance Survey	Current CPRI
Potentially avoidable hospitalisations	Rate of children experiencing potentially avoidable hospitalisations	Ministry of Health National Minimum Dataset	Current CPRI

Analysis of the three current CPRIs can be found in the companion report *2024/25 Annual Report on the Child and Youth Strategy and Child Poverty Related Indicators*.

Putting the findings in context

This report captures progress on the measures over a six-year period where available, in line with the first year of reporting on the previous Strategy. It identifies changes in the measures between the relevant baseline year for each measure and 2024/25; and between 2023/24 (the previous year of reporting) and 2024/25. The report does not assess causal relationships. Where available, wider research and evidence are drawn upon for some indicators to support commentary in changes over time.

The data tables are colour-coded to highlight the direction of change since the relevant baseline year and since 2023/24, where the data is available. Where a change is not known, this is mostly due to the availability of data and means that comparisons over the time are not possible. For some measures, there are small discrepancies between the reported figures and the reported changes due to rounding.

Improved

No change

Worse

Not known

The report includes some data labels that are set out in a key, to support data interpretation.

Some measures are based on data from a representative sample. Measures based on a representative sample are marked "S". For data from sample surveys, the report identifies a positive or negative change where the change is statistically significant.

Statistical significance testing is used where data is collected from a representative sample. A change is considered statistically significant when statistical testing shows that it is very likely to reflect a real change in the overall population being measured. The report includes either the level of sampling error on the change or the lower and upper bounds of the change (the range within which the true difference is likely to lie). These are included in italicised brackets. For groups with smaller populations and sample size, such as Māori children and disabled children, there is likely to be a wider margin of error, and changes are less likely to be statistically significant.

Some measures are not based on a sample population but instead are based on administrative data that covers the whole population, or a specific sub-population. Measures from administrative data are marked "A".

For data from administrative sources this report identifies a positive or negative change for each measure on the relevant metric, where there is an increase or decrease by 1 percentage point or more, an increase or decrease in the rate of children and young people by 1.5 or more, or a change in the number of children or young people by 5 or more.

An "R" means that data for previous years has been updated since the last report ([2023/24 Annual Report](#)) and the figure in this report is different than what was published in the last report.

Key	S	A	R	Ppt
	Based on a representative sample	Based on administrative data	Data revised since last reported	Percentage point change

Summary of findings

Most children and young people in New Zealand are doing well on many of the previous Strategy indicators in 2024/25. However, not all children and young people in New Zealand are having the same positive experiences across all indicators. Looking at the changes over time, some areas are seeing positive progress, and some areas are worsening.

Some indicators have improved since the last reporting year or baseline year

- Rates of serious injury and child mortality have improved since 2019/20.
- Early learning participation has increased since 2019/20.
- Food insecurity has improved between 2023/24 and 2024/25, however, there has been no statistically significant change since 2019/20.
- More young people were making positive choices about alcohol and cigarette use in 2024/25, compared to 2019/20.

Some indicators have improved from the baseline year with mixed trends over the short term

- The number of children with substantiated reports of concern has improved since 2019/20, however, this has worsened between 2023/24 and 2024/25.
- Two of the three child poverty measures have improved since 2017/18, however, there has been no statistically significant change between 2023/24 and 2024/25.

Some indicators have worsened since the baseline year

- Rates of potentially avoidable hospitalisations have worsened since 2019/20. While there has been no statistically significant change between 2023/24 and 2024/25 for all children and young people, the rates for Māori children and Pacific children have worsened from 2023/24 to 2024/25.
- The rates of children living in damp or mouldy housing worsened from 2023/24 to 2024/25, however, there has been no statistically significant change since 2019/20.
- Housing affordability has worsened since 2019/20, however, there was no statistically significant change between 2023/24 to 2024/25.
- While regular school attendance rates improved between 2023/24 and 2024/25, they have worsened since 2019/20.
- Rates of mental wellbeing have worsened since 2019/20, however, there has been no statistically significant change for these since the last reporting year.

Previous CPRI: Reduced food insecurity

21.4% of children were in households experiencing food insecurity

Number of children and young people	Percentage of children and young people	Change since 2023/24	Change since 2019/20
208,000 children	21.4%	Improved	No change

	2019/20	2020/21	2021/22	2022/23	2023/24	2024/25	Change since 2023/24	Change since 2019/20
All children	20.0%	15.0% R	14.4%	21.3%	24.9% R	21.4%	-3.5 ppt (-6.7ppt – -0.4ppt) Improved	+1.4 ppt (-1.6ppt – +4.4ppt) No change

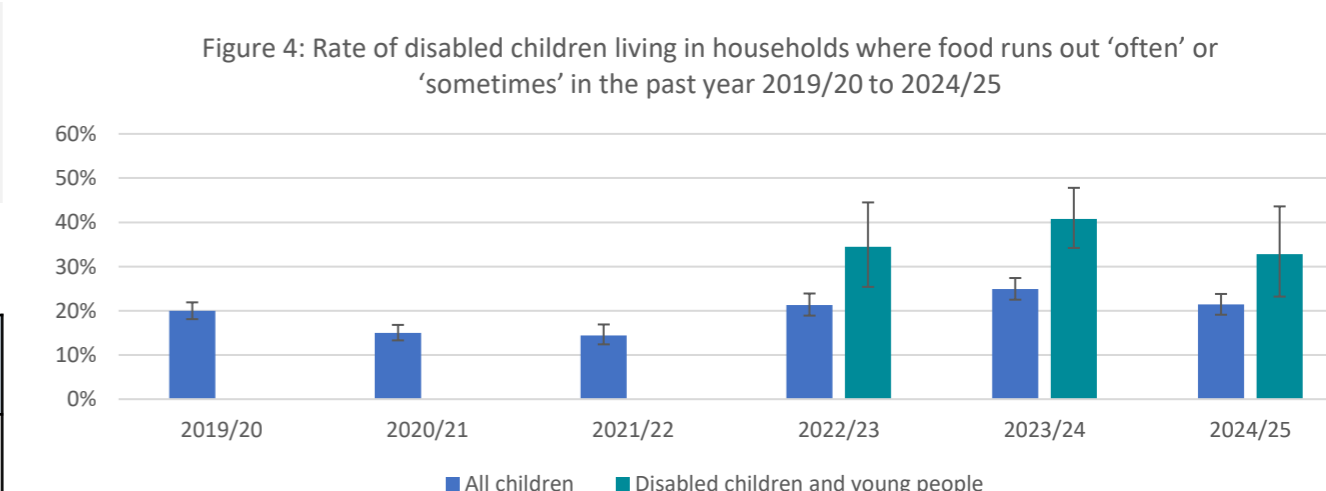
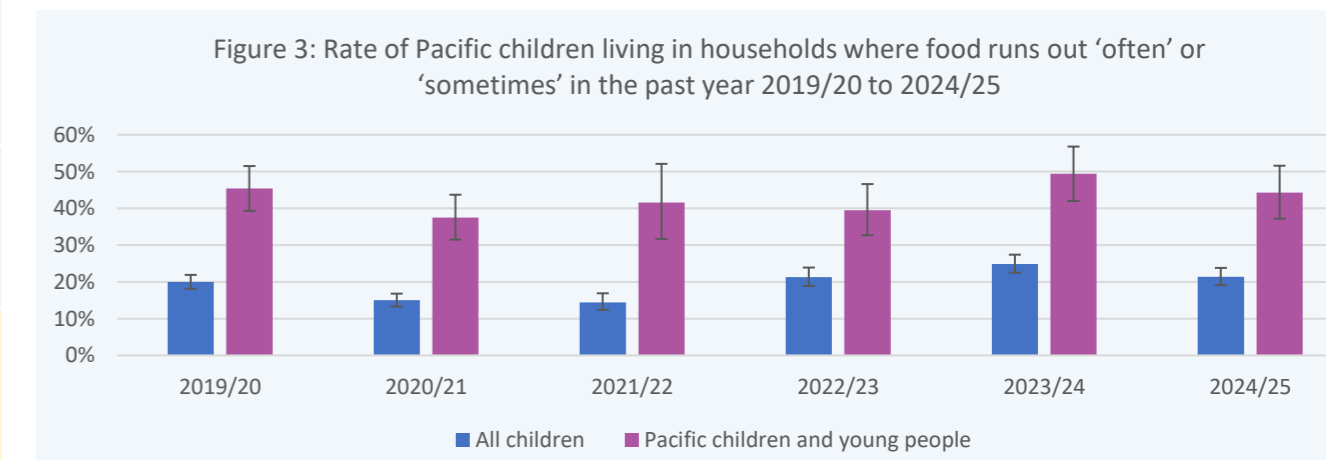
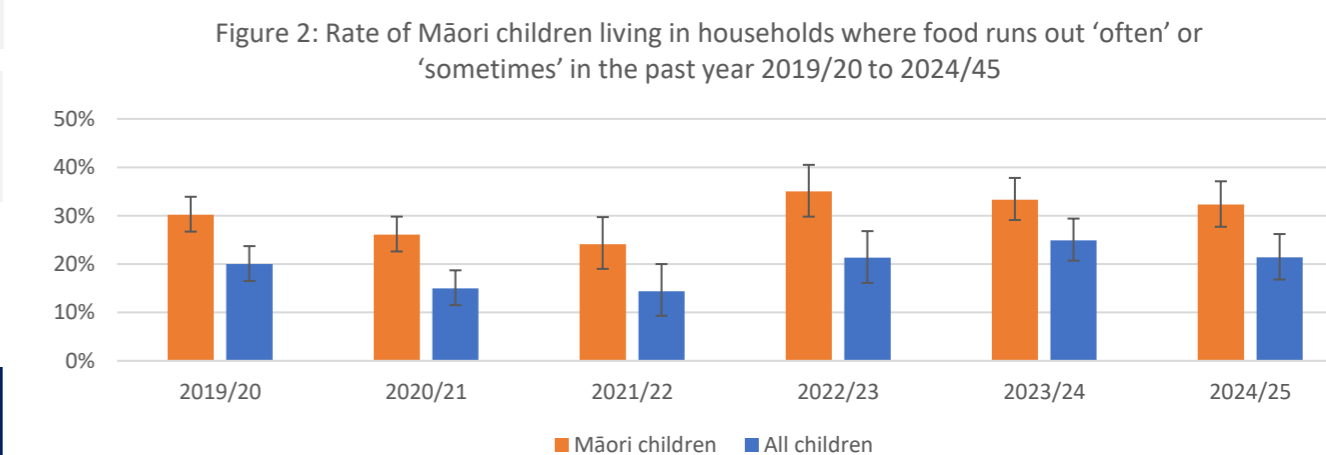
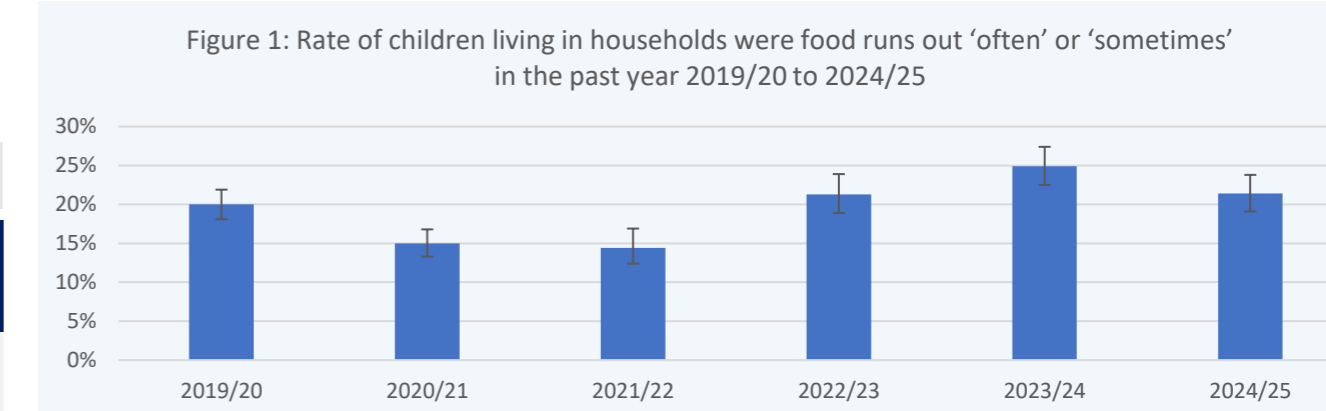
In 2024/25, 21.4 percent of children (aged 0-14 years) lived in households where food runs out often or sometimes in the past year. While this is a statistically significant decrease of 3.5 percentage points from 2023/24, the percentage has fluctuated over the reporting period.

Pacific children experienced food insecurity at a higher rate than for all children, while Māori children and disabled children experienced food insecurity at a slightly higher rate than for all children

	2019/20	2020/21	2021/22	2022/23	2023/24	2024/25	Change since 2023/24	Change since 2019/20
Māori children	30.2% R	26.1% R	24.1%	35.0% R	33.3% R	32.3%	-1.0 ppt (-7.4ppt – +5.3ppt) No change	+2.1 ppt (-3.5ppt – -7.6ppt) No change
Pacific children	45.4%	37.5% R	41.6%	39.5% R	49.4% R	44.3%	-5.1 ppt (-14.7ppt – +4.5ppt) No change	- 1.0 ppt (-10.2ppt – +8.1ppt) No change
Disabled children aged 5-14 years	Data not available	Data not available	Data not available	34.5% R	40.8% R	32.8%	-8.0 ppt (-20.1ppt – +4.0ppt) No change	Not known

There was no statistically significant change in rates of food insecurity for Māori children between 2023/24 and 2024/25.

Rates for disabled children (aged 5-14) in 2024/25 (32.8 percent), while still significantly higher than for non-disabled children (19.4 percent), did not change significantly compared to 2023/24.



Data Notes	Percentage of all children aged 0-14 in households where food runs out often or sometimes - S	New Zealand Health Survey, Ministry of Health
	The CPRI measures the percentage of children (aged 0-14 years) living in households reporting that food runs out "often" or "sometimes" in the past year. The New Zealand Health Survey looks at a different age range for disabled children and young people (5-14 years), from that for all children and young people (0-14 years).	

Previous CPRI: Improved housing quality

7.2% of children and young people aged 0-17 lived in households with a major problem with dampness or mould

Number of children and young people	Percentage of children and young people	Change since 2023/24	Change since 2019/20
NA	7.2%	2.2 ppt Worse	0.3 ppt No change

	2019/20*	2020/21*	2021/22*	2022/23*	2023/24*	2024/25**	Change since 2023/24	Change since 2019/20
All children and young people	6.9% R	5.8% R	6.2% R	5.8% R	5.0% R	7.2%	+ 2.2 ppt (+/- 1.1) Worse	+ 0.3 ppt (+/- 1.2) No change

The design of the question used to derive the indicator changed in 2024/25. Changes between 2024/25 data and previous years may reflect both real-world and question design changes, and should be considered when interpreting changes over time.

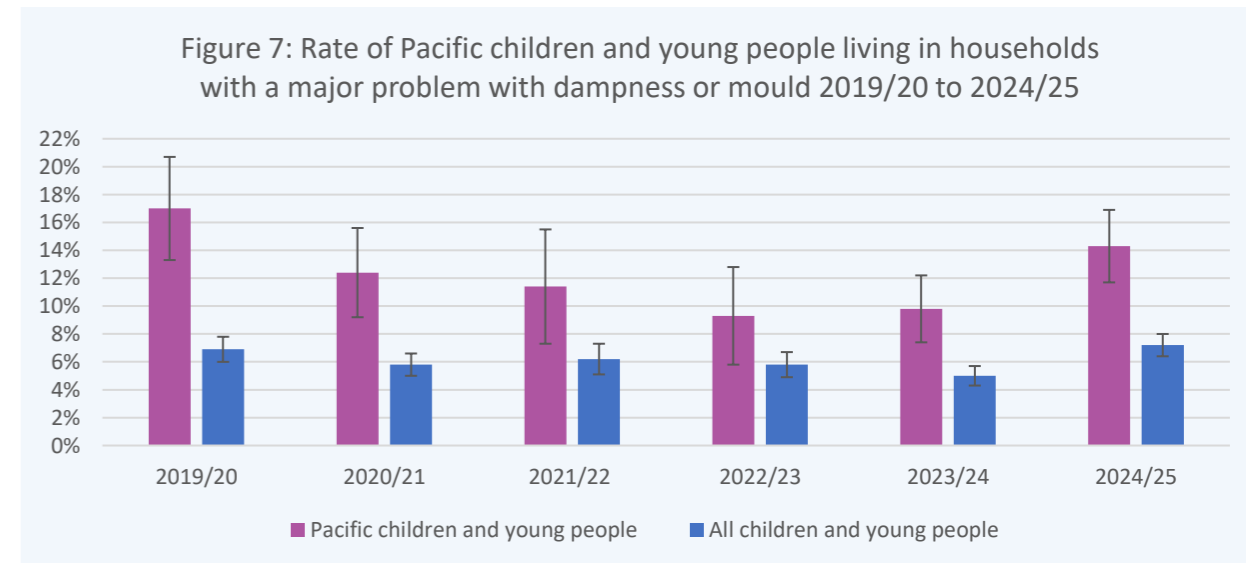
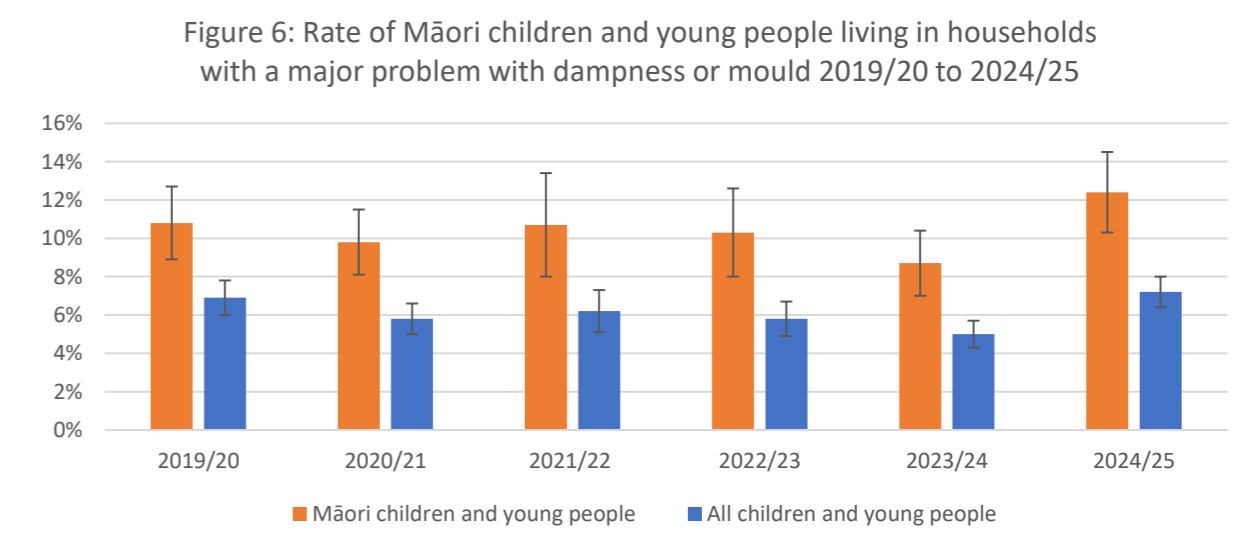
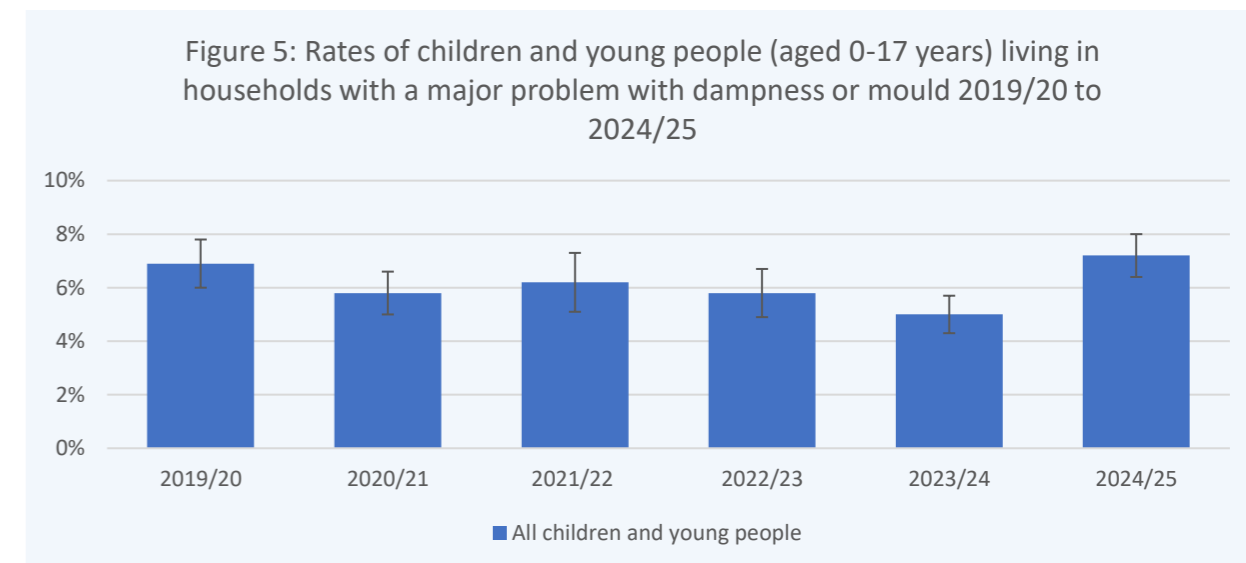
In 2024/25 7.2 percent of children and young people (aged 0-17 years) lived in households with a major problem with dampness or mould, which has worsened from 5 percent in 2023/24. There has been no statistically significant change in the number of children living in poor quality housing since the baseline year of 2019/20, where 6.9 percent of children (aged 0-17 years) lived in households with a major problem with dampness or mould.

Rates of housing quality look different for children in households with different levels of income. In 2024/25, 12.2 percent of children in households in the lowest-income quintile (Quintile 1) lived in households with a major problem with dampness or mould, compared to 1.7 percent of children in households in the highest-income quintile (Quintile 5).

	2019/20*	2020/21*	2021/22*	2022/23*	2023/24*	2024/25**	Change since 2023/24	Change since 2019/20
Māori children and young people	10.8% R	9.8% R	10.7% R	10.3% R	8.7% R	12.4%	+ 3.7 ppt (+/- 2.7) Worse	+ 1.6 ppt (+/- 2.9) No change
Pacific children and young people	17.0% R	12.4% R	11.4% R	9.3% R	9.8% R	14.3%	+ 4.5 ppt (+/- 3.4) Worse	-2.7 ppt (+/- 4.5) No change

The percentage of Māori children and young people living in poor quality housing was higher than the percentage of all children. In 2024/25, 12.4 percent of Māori children (aged 0-17 years) lived in households with a major problem with dampness or mould, which has worsened from 8.7 percent in 2023/24. There has been no statistically significant change in the percentage of Māori children living in poor quality housing since the baseline year of 2019/20, where 10.8 percent of Māori children were living in households with a major problem with dampness or mould.

Pacific children and young people were also more likely to live in households with a major problem with dampness or mould. In 2024/25, 14.3 percent of Pacific children lived in households with a major problem with dampness or mould, compared to 9.8 percent in 2023/24. There has been no statistically significant change in the percentage of Pacific children living in poor quality housing since the baseline year of 2019/20, where 17 percent of Pacific children were living in households with a major problem with dampness or mould.



Data Notes	Percentage of children and young people (aged 0-17 years) living in households with a major problem with dampness or mould - S	Household Economic Survey*, Household Income and Living Survey**, Stats NZ
	This CPRI measures the percentage of children (aged 0-17 years) living in households reporting a major problem with dampness or mould over the past 12 months. The indicator is a useful proxy for housing quality but will also reflect a range of other factors that influence damp or mould beyond the quality of the building itself, including household crowding, heating, and behavioural factors. See data notes on page 21 for further information on the change in question.	

Previous CPRI: Improved housing quality

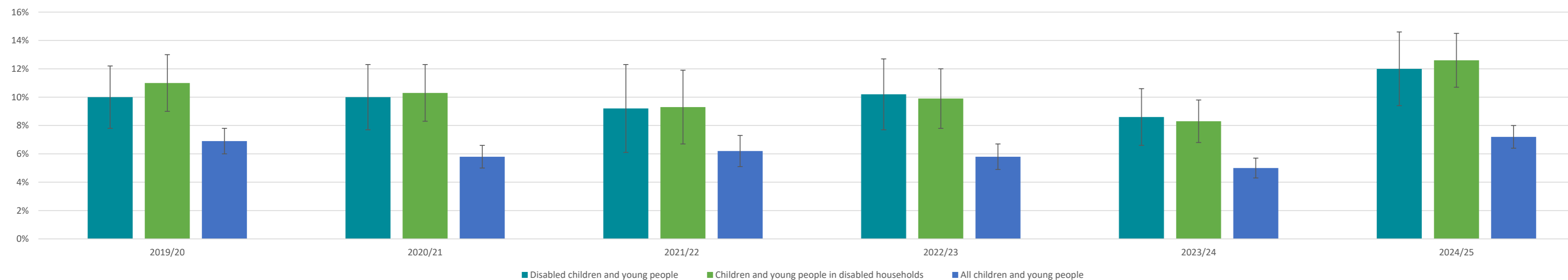
Disabled children are more likely to be in housing with a major problem with dampness or mould than all children

	2019/20*	2020/21*	2021/22*	2022/23*	2023/24*	2024/25**	Change since 2023/24	Change since 2019/20
Disabled children and young people	10.0% R	10.0% R	9.2% R	10.2% R	8.6% R	12.0%	+ 3.4 ppt (+/- 3.2) Worse	+ 1.9 ppt (+/- 3.4) No change
Children and young people in disabled households	11.0% R	10.3% R	9.3% R	9.9% R	8.3% R	12.6%	+ 4.3 ppt (+/-2.3) Worse	+ 1.6 ppt (+/-2.9) No change

Disabled children and young people are also more likely to live in poor quality housing than the percentage of all children and young people. In 2024/25, 12 percent of disabled children (aged 0-17 years) lived in households with a major problem with dampness or mould, which has worsened from 8.6 percent in 2023/24. There has been no statistically significant change in the percentage of disabled children who lived in poor-quality housing in the baseline year of 2019/20, where 10 percent of disabled children were living in households with a major problem with dampness or mould.

More children and young people in disabled households also lived in poor-quality housing than the percentage of all children and young people. In 2024/25, 12.6 percent of children in disabled households were living in poor quality housing, which has worsened from 8.3 percent in 2023/24. There has been no statistically significant change in the percentage of children in disabled households who lived in poor-quality housing in the baseline year of 2019/20, where 11 percent of these children were living in households with a major problem with dampness or mould.

Figure 8: Rate of disabled children and young people and children and young people living in households with disabled adults with a major problem with dampness or mould 2019/20 to 2024/25



Data Notes	Percentage of children and young people (aged 0-17 years) living in households with a major problem with dampness or mould-- S	Household Economic Survey*, Household Income and Living Survey**, Stats NZ
	This CPRI measures the percentage of children (aged 0-17 years) living in households reporting a major problem with dampness or mould over the past 12 months. The indicator is a useful proxy for housing quality but will also reflect a range of other factors that influence damp or mould beyond the quality of the building itself, including household crowding, heating, and behavioural factors.	

Child and Youth Wellbeing Strategy - Previous Strategy Indicators

Outcome 1: Children and young people are loved, safe and nurtured

Indicator	Measure	Source
Family and whānau wellbeing	Percentage of young people aged 18-24 who rate their family as doing well (Rated 7-10 in a scale of 0-10) – S The most recent data is available in the 2023/24 Annual Report	Household Labour Force Survey (Wellbeing Supplement) and General Social Survey, Stats NZ

Indicator	Measure	Findings for	2019/20	2023/24	2024/25	Change since 2023/24	Change since 2019/20	Source
Harm against children	Number of children and young people aged 0-17 with notifications to Oranga Tamariki who were referred for further assessment or investigation – A	All children and young people	34,673	31,784	34,167	+2,383 Worse	-506 Improved	Administrative data, Oranga Tamariki
		Māori children and young people	19,596 R	17,549 R	18,420	+871 Worse	-1,176 Improved	
		Pacific children and young people	5,858 R	5,693 R	6,040	+347 Worse	+182 Worse	
Serious injury	Rate of serious non-fatal injuries per 100,000 children and young people aged 0-24 – A	All children and young people	122.6	111.8 R	111.9	+0.1 No change	-10.7 Improved	Serious Injury Outcome Indicators, Stats NZ
		Māori children and young people	168.8	160.4 R	159.1	-1.3 Improved	-9.7 Improved	

Indicator	Measure	Findings for	2019/20	2021/22	2022/23	Change 2021/22 to 2022/23	Change 2019/20 to 2022/23	Source
Child mortality	Number of deaths (all causes) of children and young people aged 0-24 – A	All young people	772	761 R	695 R	-66 Improved	-77 Improved	Mortality Web Tool, Mortality Collection, Health NZ
		Māori children and young people	267 R	272 R	254 R	-18 Improved	-13 Improved	
		Pacific children and young people	110	101 R	101	0 No change	-9 Improved	

Key	S	A	R	Ppt
	Based on a representative sample	Based on administrative data	Data revised since last reported	Percentage point change

Child and Youth Wellbeing Strategy - Previous Strategy Indicators

Outcome 1: Children and young people are loved, safe and nurtured

Indicator	Measure	Findings for	2019/20	2021/22	2024/25	Change since 2021/22	Change since 2019/20	Source
Feeling loved	Percentage of children and young people at school who feel they are loved by the people who look after or care for them (aged 12-18+ in 2021/22 and aged 13-19 in 2024/25) - S	All young people	Data not available	90.1%	90.0%	Not known	Not known	Youth Health and Wellbeing Survey, Ministry of Social Development
		Māori young people	Data not available	87.0%	88.6%	Not known	Not known	
		Pacific young people	Data not available	89.1%	89.8%	Not known	Not known	
		Disabled young people	Data not available	80.8%	80.0%	Not known	Not known	
Family and whānau wellbeing	Percentage of children and young people at school rating their families as doing well (aged 12-18+ in 2021/22 and aged 13-19 in 2024/25) - S	All young people	Data not available	73.5%	76.0%	Not known	Not known	Youth Health and Wellbeing Survey, Ministry of Social Development
		Māori young people	Data not available	65.7%	75.2%	Not known	Not known	
		Pacific young people	Data not available	74.4%	74.9%	Not known	Not known	
		Disabled young people	Data not available	54.6%	59.4%	Not known	Not known	
Harm against children	Percentage of children and young people at school who have been hit or physically hurt in the last 12 months, or have seen others in the home being hit or physically hurt by adults in the places where they usually live (aged 12-18+ in 2021/22 and aged 13-19 in 2024/25) - S	All young people	Data not available	13.4%	10.7%	Not known	Not known	Youth Health and Wellbeing Survey, Ministry of Social Development
		Māori young people	Data not available	20.7%	14.5%	Not known	Not known	
		Pacific young people	Data not available	19.2%	17.9%	Not known	Not known	
		Disabled young people	Data not available	23.7%	20.5%	Not known	Not known	
Quality time with parents	Percentage of children and young people at school who feel they get to spend enough time with the people who look after or care for them (aged 12-18+ in 2021/22 and aged 13-19 in 2024/25) - S	All young people	Data not available	74.2%	68.9%	Not known	Not known	Youth Health and Wellbeing Survey, Ministry of Social Development
		Māori young people	Data not available	65.8%	67.9%	Not known	Not known	
		Pacific young people	Data not available	70.8%	70.0%	Not known	Not known	
		Disabled young people	Data not available	58.2%	52.2%	Not known	Not known	
Feeling safe	Percentage of children and young people at school who agree they feel safe at home (aged 12-18+ in 2021/22 and aged 13-19 in 2024/25) - S	All young people	Data not available	88.7%	88.9%	Not known	Not known	Youth Health and Wellbeing Survey, Ministry of Social Development
		Māori young people	Data not available	85.0%	86.6%	Not known	Not known	
		Pacific young people	Data not available	86.8%	87.2%	Not known	Not known	
		Disabled young people	Data not available	76.9%	77.0%	Not known	Not known	

Child and Youth Wellbeing Strategy - Previous Strategy Indicators

Outcome 2: Children and young people have what they need

Indicator	Measure	Findings for	Baseline*	2023/24*	2024/25**	Change since 2023/24	Change since baseline	Source
Child poverty and material hardship	Percentage of children and young people aged 0-17 living in households with less than 50% of the median equivalised disposable household income before housing costs (BHC) – S	All children and young people	16.5%	12.7% R	12.6%	-0.1 ppt (+/- 1.5ppt) No change	-3.9 ppt (+/- 1.7ppt) Improved	Household Economic Survey*, Household Income and Living Survey**, Stats NZ
		Māori children and young people	17.9%	15.0% R	14.9%	-0.1 ppt (+/-3.3) No change	-3.0 ppt (+/-2.8) Worse	
		Pacific children and young people	18.4% R	13.6% R	18.7%	+ 5.0 ppt (+/- 4.8 ppt) Worse	+ 0.2 ppt (+/- 5.2) No change	
		Disabled children and young people	16.4% R	14.2% R	13.3%	-0.9 ppt (+/-3.9) No change	-3.1 ppt (+/- 4.1) No change	
		Children and young people in disabled households	16.9% R	14.5% R	13.0%	-1.5 ppt (+/- 2.8) No change	-3.9 ppt (+/- 3.0) Worse	
	Percentage of children and young people aged 0-17 living in households with less than 50% of the median equivalised disposable household income after housing costs, adjusting for inflation since 2017/18 (Fixed line measure using 2017/18 as baseline year) (AHC) – S	All children and young people	22.8%	18.2% R	17.8%	-0.4 ppt (+/- 1.7 ppt) No change	-5.0 ppt (+/- 2.4) Improved	Household Economic Survey*, Household Income and Living Survey**, Stats NZ
		Māori children and young people	22.9% R	19.7% R	18.9%	-0.7 ppt (+/- 3.6) No change	-4.0 ppt (+/- 3.1) Worse	
		Pacific children and young people	22.0% R	18.2% R	20.2%	+ 2.0 ppt (+/- 5.4) No change	-1.7 ppt (+/- 5.0) No change	
		Disabled children and young people	22.1% R	19.0% R	19.9%	+1.0 ppt (+/- 4.5) No change	-2.2 ppt (+/- 4.9) No change	
		Children and young people in disabled households	21.2% R	19.7% R	18.5%	-1.1 ppt (+/-3.3) No change	-2.6 ppt (+/- 3.8) No change	
	Percentage of children and young people aged 0-17 living in households experiencing material hardship - S	All children and young people	13.3%	13.5% R	14.3%	+ 0.8 ppt (+/- 1.7) No change	+ 1.1 ppt (+/-2.7) No change	Household Economic Survey*, Household Income and Living Survey**, Stats NZ
		Māori children and young people	22.8% R	24.2% R	25.1%	+ 0.9 ppt (+/- 4) No change	+ 2.3 ppt (+/-3.9) No change	
		Pacific children and young people	28.2% R	28.8% R	31.0%	+ 2.2 ppt (+/- 6) No change	+ 2.8 ppt (+/- 6.8) No change	
		Disabled children and young people	Data not available	Data not available	26.9%	Not known	Not known	
		Children and young people in disabled households	Data not available	Data not available	27.5%	Not known	Not known	

Child and Youth Wellbeing Strategy - Previous Strategy Indicators

Outcome 2: Children and young people have what they need

Indicator	Measure	Findings for	2019/20*	2022/23*	2023/24*	Change from 2023/23 to 2023/24	Change from 2019/20 to 2023/24	Source
Material wellbeing	Percentage of children and young people aged 0-17 living in households experiencing good material wellbeing - S	All children and young people	84.4%	82.6%	82.4%	-0.2 ppt (+/- 1.9) No change	-2.0 (+/- 3.5) Worse	Household Economic Survey*, Household Income and Living Survey**, Stats NZ
		Māori children and young people	74.8%	72.4%	71.6%	-0.7 ppt (+/- 4.1) No change	-3.2 ppt (+/- 3.5) No change	
		Pacific children and young people	63.2%	61.7%	61.6%	0.0 (+/- 7.2) No change	-1.6 ppt (+/- 6.2) No change	
		Disabled children and young people	75.0%	73.4%	72.3%	-1.2 ppt (+/- 5.2) No change	-2.7 ppt (+/- 4.8) No change	
		Children and young people in disabled households	73.8%	72.1%	71.6%	-0.5 ppt (+/- 4.1) No change	-2.2 ppt (+/- 3.5) No change	

Indicator	Measure	Findings for	2019/20	2023/24	2024/25	Change from 2023/24 to 2024/25	Change from 2019/20 to 2024/25	Source
Food insecurity	Percentage of children aged 0-14 living in households where food runs out sometimes or often - S	All children	20.0%	24.9% R	21.4%	-3.5 ppt (-6.7ppt - -0.4ppt) Improved	+1.4 ppt (-1.6ppt - +4.4ppt) No change	New Zealand Health Survey, Ministry of Health
		Māori children	30.2% R	33.3% R	32.3%	-1.0 ppt (-7.4pt - +5.3ppt) No change	+2.1 ppt (-3.5ppt - -7.6ppt) No change	
		Pacific children	45.4%	49.4% R	44.3%	-5.1 ppt (-14.7ppt - +4.5ppt) No change	- 1.0 ppt (-10.2ppt - +8.1ppt) No change	
		Disabled children aged 5-14 years	Data not available	40.8% R	32.8%	-8.0 ppt (-20.1ppt - +4.0ppt) No change	Not known	

Key	S	A	R	Ppt
	Based on a representative sample	Based on administrative data	Data revised since last reported	Percentage point change

Outcome 2: Children and young people have what they need

Indicator	Measure	Findings for	2019/20*	2023/24*	2024/25**	Change since 2023/24	Change since 2019/20	Source
Housing quality	Percentage of children and young people aged 0-17 living in households with a major problem with dampness or mould – S	All children and young people	6.9%	5.0%	7.2%	+ 2.2 ppt (+/- 1.1) Worse	+ 0.3 ppt (+/- 1.2) No change	Household Economic Survey*, Household Income and Living Survey**, Stats NZ
		Māori children and young people	10.8% R	8.7% R	12.4%	+ 3.7 ppt (+/- 2.7) Worse	+ 1.6 ppt (+/- 2.9) No change	
		Pacific children and young people	17.0%	9.8% R	14.3%	+ 4.5 ppt (+/-3.4) Worse	-2.7 ppt (+/- 4.5) No change	
		Disabled children and young people	10.0%	8.6%	12.0%	+ 3.4 ppt (+/- 3.2) Worse	+ 1.9 ppt (+/- 3.4) No change	
		Children and young people in disabled households	11.0% R	8.3%	12.6%	+ 4.3 ppt (+/-2.3) Worse	+ 1.6 ppt (+/-2.9) No change	
Housing affordability	Percentage of children and young people aged 0-17 living in low-income households (quintile 1-2) spending more than 30 percent of their disposable income on housing – S	All children and young people	49.4% R	53.6% R	56.7%	+ 3.0 ppt (+/- 3.5) No change	+ 7.3 ppt (+/- 3.2) Worse	Household Economic Survey*, Household Income and Living Survey**, Stats NZ
		Māori children and young people	40.3%	46.3% R	50.9%	+ 4.6 ppt (+/-6.3) No change	+ 10.9 ppt (+/-5.9) Worse	
		Pacific children and young people	43.5% R	43.9% R	50.4%	+ 6.4 ppt (+/- 7.8) No change	+ 6.9 ppt (+/- 7.7) No change	
		Disabled children and young people	45.9%	50.1% R	55.6%	+ 5.6 ppt (+/-8.0) No change	+ 9.8 ppt (+/-7.6) Worse	
		Children and young people in disabled households	43.2% R	49.2% R	53.2%	+ 4.0 ppt (+/- 6.1) No change	+ 10.0 ppt (+/- 5.9) Worse	

Key	S	A	R	Ppt
	Based on a representative sample	Based on administrative data	Data revised since last reported	Percentage point change

Child and Youth Wellbeing Strategy - Previous Strategy Indicators

Outcome 3: Children and young people are happy and healthy

Indicator	Measure	Findings for	2019	2023	2024	Change since 2023	Change since 2019	Source
Prenatal health	Percentage of people registered with a Lead Maternity Carer, among all people giving birth – A	All people	92.8% R	93.9%	92.7%	-1.2 Worse	-0.1 No change	National Maternity Collection, Health NZ
		Māori people	91.4% R	91.5%	90.7%	-0.8 No change	-0.7 No change	
		Pacific people	84.6% R	88.2%	86.0%	-2.2 Worse	+1.4 Improved	
	Percentage of people registering with a Lead Maternity Carer in their first trimester of pregnancy, among all people registered with Lead Maternity Carers – A	All people	73.3% R	73.0%	73.2%	+0.2 No change	-0.1 No change	National Maternity Collection, Health NZ
		Māori people	59.2% R	59.0%	59.6%	+0.6 No change	+0.4 No change	
		Pacific people	44.7% R	49.4%	48.5%	-0.9 No change	+3.8 Improved	
	Percentage of people giving birth who reported their smoking status that were smoking two weeks after the birth of their child – A	The most recent data for 2021/22 is available in the 2023/24 Annual Report						

Indicator	Measure	Findings for	2019/20	2023/24	2024/25	Change since 2023/24	Change since 2019/20	Source
Subjective health status	Percentage of young people aged 15-24 reporting their health as good, very good, or excellent – S	All young people	90.4% R	90.5%	91.4%	+0.8ppt (-2.5ppt – +4.1ppt) No change	+1.0ppt (-2.5ppt – +4.6ppt) No change	New Zealand Health Survey, Ministry of Health
		Māori young people	84.6% R	83.4% R	88.5%	+5ppt (-1.4ppt – +11.4ppt) No change	+3.8ppt (-3.1ppt – +10.8ppt) No change	
		Pacific young people	85.7% R	89.3% R	86.5%	-2.8ppt (-12.4ppt – +6.9ppt) No change	+0.9ppt (-10.1ppt – +11.8ppt) No change	
		Disabled young people	49.0% R	66.6% R	74.7%	+8.1ppt (-9.2ppt – +25.3ppt) No change	+25.7ppt (+3.0ppt – +48.4ppt) Improved	
	Percentage of children and young people reporting their health as good, very good, or excellent (aged 12-18+ in 2021/22 and aged 13-19 in 2024/25) – S	All young people	Data not available	85.5%	80.3%	Not known	Not known	Youth Health and Wellbeing Survey, Ministry of Social Development
Māori young people	Data not available	81.8%	77.4%	Not known	Not known			
Pacific young people	Data not available	83.4%	76.5%	Not known	Not known			
Disabled young people	Data not available	70.2%	60.1%	Not known	Not known			

Child and Youth Wellbeing Strategy - Previous Strategy Indicators

Outcome 3: Children and young people are happy and healthy

Indicator	Measure	Findings for	2019/20	2023/24	2024/25	Change since 2023/24	Change since 2019/20	Source
Subjective health status	Rate of potentially avoidable hospitalisations per 1,000 children and young people aged 0-14 – A	All children and young people	62.2	82.2 R	82.40	+0.2 No change	+20.2 Worse	National Minimum Dataset, Ministry of Health
		Māori children and young people	75.9	96.5 R	98.10	+1.6 Worse	+22.2 Worse	
		Pacific children and young people	92.8	131.1 R	133.40	+2.3 Worse	+40.6 Worse	

Indicator	Measure	Findings for	2019/20	2023/24	2024/25	Change since 2023/24	Change since 2019/20	Source
Mental wellbeing	Percentage of young people aged 15-24 years who experienced high or very high levels of psychological distress in the last four weeks (K10) – S	All young people	11.2% R	23.2%	22.9%	-0.3 ppt (-5.2ppt - +4.5ppt) No change	+11.7 ppt (+7.0ppt - +16.4ppt) Worse	New Zealand Health Survey, Ministry of Health
		Māori young people	14.6% R	24.6% R	27.1%	+2.5 ppt (-6.8ppt - +11.8ppt) No change	+12.5 ppt (+4.4ppt - +20.6ppt) Worse	
		Pacific young people	9.1% R	24.7% R	30.8%	+6.1 ppt (-9.7ppt - +21.9ppt) No change	+21.7 ppt (+8.5ppt - +35.0ppt) Worse	
		Disabled young people	48.4% R	67.8% R	70.5%	+2.7 ppt (-16.2ppt - +21.7ppt) No change	+22.1 ppt (+3.0ppt - +41.3ppt) Worse	

Indicator	Measure	Findings for	2019/20	2021/22	2024/25	Change since 2023/24	Change since 2019/20	Source
Mental wellbeing	Percentage of children and young people who experienced high or very high levels of psychological distress in the last four weeks (aged 12-18+ in 2021/22 and aged 13-19 in 2024/25) (K6) – S	All young people	Data not available	27.9%	21.2%	Not known	Not known	Youth Health and Wellbeing Survey, Ministry of Social Development
		Māori young people	Data not available	35.5%	25.1%	Not known	Not known	
		Pacific young people	Data not available	25.3%	28.1%	Not known	Not known	
		Disabled young people	Data not available	55.9%	48.5%	Not known	Not known	

Key	S	A	R	Ppt
	Based on a representative sample	Based on administrative data	Data revised since last reported	Percentage point change

Child and Youth Wellbeing Strategy - Previous Strategy Indicators

Outcome 3: Children and young people are happy and healthy

Indicator	Measure	Findings for	2019/20	2021/22	2024/25	Change since 2023/24	Change since 2019/20	Source
Self-harm and suicide	Percentage of children and young people at school who in the last 12 months have deliberately hurt themselves (aged 12-18+ in 2021/22 and aged 13-19 in 2024/25) – S	All young people	Data not available	34.1%	24.2%	Not known	Not known	Youth Health and Wellbeing Survey, Ministry of Social Development
		Māori young people	Data not available	43.5%	29.0%	Not known	Not known	
		Pacific young people	Data not available	29.9%	27.9%	Not known	Not known	
		Disabled young people	Data not available	58.8%	46.3%	Not known	Not known	
	Percentage of children and young people at school that in the last 12 months have seriously thought about killing themselves (aged 12-18+ in 2021/22 and aged 13-19 in 2024/25) – S	All young people	Data not available	26.4%	19.0%	Not known	Not known	Youth Health and Wellbeing Survey, Ministry of Social Development
		Māori young people	Data not available	37.5%	23.7%	Not known	Not known	
		Pacific young people	Data not available	31.1%	26.4%	Not known	Not known	
		Disabled young people	Data not available	49.2%	42.4%	Not known	Not known	
	Percentage of children and young people at school who in the last 12 months have attempted suicide (aged 12-18+ in 2021/22 and aged 13-19 in 2024/25) – S	All young people	Data not available	11.7%	5.7%	Not known	Not known	Youth Health and Wellbeing Survey, Ministry of Social Development
		Māori young people	Data not available	20.3%	8.8%	Not known	Not known	
		Pacific young people	Data not available	16.6%	10.2%	Not known	Not known	
		Disabled young people	Data not available	25.7%	15.3%	Not known	Not known	

Indicator	Measure	Findings for	2019/20	2023/24	2024/25	Change since 2023/24	Change since 2019/20	Source
Self-harm and suicide	Rate of suspected self-inflicted deaths per 100,000 young people aged 15-24 years – A	All young people	18.1	16.1 R	14.9	-1.2 No change	-3.2 No change	Health NZ, the Coroner’s Court and Ministry of Justice Coronial Services unit
		Māori young people	29.5 R	24.4 R	23.8	-0.6 No change	-5.7 No change	
		Pacific young people	12.5 R	16.1 R	11.4	-4.7 No change	-1.1 No change	

Outcome 4: Children and young people are learning and developing

Indicator	Measure	Findings for	2019/20	2023/24	2024/25	Change since 2023/24	Change since 2019/20	Source
Early learning participation	Percentage of 3-year-old children attending early childhood education for 10 or more hours a week on average – A	All young people	74.3%	73.7%	76.9%	+3.2 ppt Improved	+2.6 ppt Improved	Early Learning Information (ELI), Ministry of Education
		Māori young people	61.9%	60.4%	66.0%	+5.6 ppt Improved	+4.1 ppt Improved	
		Pacific young people	67.3%	60.4%	64.3%	+3.9 ppt Improved	-3.0 ppt Worse	
	Percentage of 4-year-old children attending early childhood education for 10 or more hours a week on average – A	All children	84.0%	80.6%	83.4%	+2.8 ppt Improved	-0.6 ppt No change	
		Māori children	68.3%	67.4%	83.0%	+15.6 ppt Improved	+14.7 ppt Improved	
		Pacific children	73.6%	67.2%	70.4%	+3.2ppt Improved	-3.2 ppt Worse	
Regular school attendance	Percentage of children and young people aged 5-18+ years who are regularly attending school - A	All children and young people	64.2% R	53.2%	58.4%	+5.2 ppt Improved	-5.8 ppt Worse	School Attendance Survey, Ministry of Education
		Māori children and young people	47.6% R	39.1%	43.7%	+4.6 ppt Improved	-3.9 ppt Worse	
		Pacific children and young people	50.1%	41.0%	44.3%	+3.3 ppt Improved	-5.8 ppt Worse	

Key	S	A	R	Ppt
	Based on a representative sample	Based on administrative data	Data revised since last reported	Percentage point change

Outcome 4: Children and young people are learning and developing

Indicator	Measure	Findings for	2019/20	2023/24	2024/25	Change since 2023/24	Change since 2019/20	Source
Participation in employment, education and training	Percentage of young people aged 15 to 24 who are participating in employment, education, or training – S	All young people	88.0% R	87.8% R	87.0%	-0.7 ppt (+/- 0.8) No change	-1.0 ppt (+/- 1.2) No change	Household Labour Force Survey, Stats NZ
		Māori young people	81.1% R	81.0% R	79.7%	-1.4 ppt (+/- 2.3) No change	-1.4 ppt (+/- 3.0) No change	
		Pacific young people	83.5% R	83.1% R	80.4%	-2.6 ppt (+/- 3.5) No change	-3.0 ppt (+/- 4.1) No change	
		Disabled young people	51.3% R	53.6% R	52.9%	-0.6 ppt (+/- 13.1) No change	+1.6 ppt (+/- 14.6) No change	

Indicator	Measure	Findings for	2019/20	2021/22	2024/25	Change since 2023/24	Change since 2019/20	Source
Social-emotional and self-management skills	Percentage of children and young people at school who reported high socio-emotional skills (aged 12-18+ in 2021/22 and aged 13-19 in 2024/25) – S	All young people	Data not available	Data not available	74.3%	Not known	Not known	Youth Health and Wellbeing Survey, Ministry of Social Development
		Māori young people	Data not available	Data not available	71.7%	Not known	Not known	
		Pacific young people	Data not available	Data not available	73.0%	Not known	Not known	
		Disabled young people	Data not available	Data not available	65.8%	Not known	Not known	
	Percentage of children and young people at school who reported high self-management skills (aged 12-18+ in 2021/22 and aged 13-19 in 2024/25) – S	All young people	Data not available	Data not available	60.1%	Not known	Not known	Youth Health and Wellbeing Survey, Ministry of Social Development
		Māori young people	Data not available	Data not available	59.1%	Not known	Not known	
		Pacific young people	Data not available	Data not available	58.1%	Not known	Not known	
		Disabled young people	Data not available	Data not available	47.9%	Not known	Not known	

Key	S	A	R	Ppt
	Based on a representative sample	Based on administrative data	Data revised since last reported	Percentage point change

Outcome 5: Children and young people are accepted, respected and connected

Indicator	Measure	Findings for	2019/20	2021/22	2024/25	Change since 2023/24	Change since 2019/20	Source
Ability to be themselves	Percentage of children and young people at school who agree that it is easy for them to express their identity (aged 12-18+ in 2021/22 and aged 13-19 in 2024/25) – S	All young people	Data not available	67.00%	60.2%	Not known	Not known	Youth Health and Wellbeing Survey, Ministry of Social Development
		Māori young people	Data not available	63.60%	61.1%	Not known	Not known	
		Pacific young people	Data not available	70.50%	62%	Not known	Not known	
		Disabled young people	Data not available	51.4%	48.6%	Not known	Not known	
Sense of belonging	Percentage of children and young people at school who feel a sense of belonging to Aotearoa/New Zealand as a whole (aged 12-18+ in 2021/22 and aged 13-19 in 2024/25) – S	All young people	Data not available	77.90%	66.2%	Not known	Not known	Youth Health and Wellbeing Survey, Ministry of Social Development
		Māori young people	Data not available	82.50%	75.2%	Not known	Not known	
		Pacific young people	Data not available	82.30%	65.7%	Not known	Not known	
		Disabled young people	Data not available	67.5%	57.4%	Not known	Not known	

Indicator	Measure	Findings for 2019/20	Source
Experiences of discrimination	Percentage of young people aged 18-24 who report experiencing discrimination in the last 12 months – S	The most recent data for 2023/24 is available in the 2023/24 Annual Report	Household Labour Force Survey Wellbeing Supplement and General Social Survey, Stats NZ

Key	S	A	R	Ppt
	Based on a representative sample	Based on administrative data	Data revised since last reported	Percentage point change

Child and Youth Wellbeing Strategy - Previous Strategy Indicators

Outcome 5: Children and young people are accepted, respected and connected

Indicator	Measure	Findings for	2019/20	2021/22	2024/25	Change since 2023/24	Change since 2019/20	Source
Experience of discrimination	Percentage of children and young people at school who report experiencing discrimination in the last 12 months (aged 12-18+ in 2021/22 and aged 13-19 in 2024/25) - S	All young people	Data not available	25.0%	35%	Not known	Not known	Youth Health and Wellbeing Survey, Ministry of Social Development
		Māori young people	Data not available	32.0%	36%	Not known	Not known	
		Pacific young people	Data not available	32.0%	36.4%	Not known	Not known	
		Disabled young people	Data not available	46.0%	53.1%	Not known	Not known	
Experience of bullying	Percentage of children and young people who experienced bullying in the last 12 months (aged 12-18+ in 2021/22 and aged 13-19 in 2024/25) - S	All young people	Data not available	36.8%	26.3%	Not known	Not known	Youth Health and Wellbeing Survey, Ministry of Social Development
		Māori young people	Data not available	40.3%	28.2%	Not known	Not known	
		Pacific young people	Data not available	28.2%	18.4%	Not known	Not known	
		Disabled young people	Data not available	50.3%	46.5%	Not known	Not known	
Social support	Percentage of children and young people at school who say they have someone they could turn to if they were going through a difficult time and needed help (aged 12-18+ in 2021/22 and aged 13-19 in 2024/25) - S	All young people	Data not available	85.3%	88.0%	Not known	Not known	Youth Health and Wellbeing Survey, Ministry of Social Development
		Māori young people	Data not available	82.9%	86.8%	Not known	Not known	
		Pacific young people	Data not available	84.6%	86.5%	Not known	Not known	
		Disabled young people	Data not available	75.8%	77.2%	Not known	Not known	
Support for cultural identities	Percentage of children and young people at school who have someone they can ask about their culture, whakapapa or ethnic group (aged 12-18+ in 2021/22 and aged 13-19 in 2024/25) - S	All young people	Data not available	73.1%	81.5%	Not known	Not known	Youth Health and Wellbeing Survey, Ministry of Social Development
		Māori young people	Data not available	86.2%	83.7%	Not known	Not known	
		Pacific young people	Data not available	87.0%	85.2%	Not known	Not known	
		Disabled young people	Data not available	63.7%	72.8%	Not known	Not known	
Languages	Percentage of children and young people at school who in everyday conversation speak a second and/or third language (aged 12-18+ in 2021/22 and aged 13-19 in 2024/25) - S	All young people	Data not available	25.9%	27.3%	Not known	Not known	Youth Health and Wellbeing Survey, Ministry of Social Development
		Māori young people	Data not available	36.4%	22.9%	Not known	Not known	
		Pacific young people	Data not available	42.6%	31.4%	Not known	Not known	
		Disabled young people	Data not available	27.3%	24.9%	Not known	Not known	

Child and Youth Wellbeing Strategy - Previous Strategy Indicators

Outcome 6: Children and young people are involved and empowered

Indicator	Measure	Findings for	2019/20	2023/24	2024/25	Change since 2023/24	Change since 2019/20	Source
Representation of young people's voices	Number of young people aged 18-24 enrolled in the New Zealand General Election (based on average daily percentage over the fiscal year) A	All young people	281,473	296,106	268,872	-27,234	-12,601	Electoral Commission
		Māori young people	60,851	68,767	64,261	-4,506	+3,410	

Indicator	Measure	Findings for	2019/20	2020/21	2023/24	Change since 2023/24	Change since 2020/21	Source	
Representation of young people's voices	Percentage of enrolled young people aged 18-24 voting in the New Zealand General Election – A	All young people	NA	78.0% (2020)	74.2% (2023)	NA	-3.8 ppt Worse (Since 2021)	Electoral Commission	
		Māori young people	NA	69.7% (2020)	70.3% (2023)	NA	+0.6 ppt Improved (Since 2021)		
	Percentage of young people reporting holding trust in parliament aged 18-24 – S	The most recent data for 2023/24 is available in the 2023/24 Annual Report							Household Labour Force Survey Wellbeing Supplement and General Social Survey, Stats NZ

Indicator	Measure	Findings for	2019/20	2023/24	2024/25	Change since 2023/24	Change since 2019/20	Source
Making positive choices	Percentage of young people aged 15-24 who are hazardous drinkers – S	All young people	27.5% R	16.9% R	21.5%	+4.6 ppt (+0.2ppt - +9.0ppt) Worse	-6.1 ppt (-11.1ppt - -1.0ppt) Improved	New Zealand Health Survey, Ministry of Health
		Māori young people	36.5% R	29.6% R	26.4% R	-3.2 ppt (-13.2ppt - +6.8ppt) No change	-10.1 ppt (-20.0ppt - -0.3ppt) Improved	
		Pacific young people	37.1% R	15.9% R	19.1% R	+3.4 ppt (-9.6ppt - +16.1ppt) No change	-17.9 ppt (-33.7ppt - -2.1ppt) Improved	
		Disabled young people	19.5% R	22.2% R	25.3%	+3.0 ppt (19.6ppt - +25.7ppt) No change	+5.8 ppt (-14.3ppt - +25.9ppt) No change	
Making positive choices	Percentage of young people aged 15-24 who smoke daily – S	All young people	10.5% R	3.2% R	3.2%	0.0 ppt (-1.9ppt - +2.0ppt) No change	-7.3 ppt (-10.0ppt - -4.5ppt) Improved	New Zealand Health Survey, Ministry of Health
		Māori young people	21.5% R	4.6% R	6.9%	-2.3 ppt (-2.3ppt - +6.9ppt) No change	-14.6 ppt (-22.4ppt - -6.7ppt) Improved	
		Disabled young people	23.4% R	2.1% R	5.5% R	+3.3 ppt (-4.4ppt - +11.0ppt) No change	-18.0 ppt (-34.4ppt - -1.6ppt) Improved	

Child and Youth Wellbeing Strategy - Previous Strategy Indicators

Outcome 6: Children and young people are involved and empowered

Indicator	Measure	Findings for	2019/20	2021/22	2024/25	Change since 2023/24	Change since 2019/20	Source
Community involvement	Percentage of children and young people at school who report helping others in the neighbourhood or community (aged 12-18+ in 2021/22 and aged 13-19 in 2024/25) – S	All young people	Data not available	46.6%	51.1%	Not known	Not known	Youth Health and Wellbeing Survey, Ministry of Social Development
		Māori young people	Data not available	50.3%	50.2%	Not known	Not known	
		Pacific young people	Data not available	56.5%	55.9%	Not known	Not known	
		Disabled young people	Data not available	44.1%	47.7%	Not known	Not known	

Indicator	Measure	Findings for	2019/20	2023/24	2024/25	Change since 2023/24	Change since 2019/20	Source
Making positive choices	Percentage of young people aged 15-24 who use e-cigarettes or vape daily – S	All young people	4.4% R	20.9% R	20.3%	-0.6 ppt (-5.7ppt - +4.6ppt) No change	+15.9 ppt (+12.0ppt - +19.8ppt) Worsened	New Zealand Health Survey, Ministry of Health
		Māori young people	5.5% R	38.8% R	42.2%	+3.4 ppt (-7.8ppt - +14.7ppt) No change	+36.7 ppt (+27.5ppt - +45.8ppt) Worsened	
		Pacific young people	2.7%	28.1%	27.8%	-0.3 ppt (-14.7ppt - +14.1ppt) No change	+25.1 ppt (+14.1ppt - +36.0ppt) Worsened	
		Disabled young people	14.5% R	27.8% R	24.1%	-3.8 ppt (-22.2ppt - +14.7ppt) No change	+9.6 ppt (-11.6ppt - +30.8ppt) No change	
	Percentage of young people aged 15-24 who have used cannabis in the last 12 months – S	All young people	27.3% R	24.3% R	24.3%	+0.1 ppt (-5.1 - +5.2ppt) No change	-3.0 ppt (-8.3ppt - +2.3ppt) No change	New Zealand Health Survey, Ministry of Health
		Māori young people	36.4%R	39.1% R	37.5%	-1.6 ppt (-12.8ppt - +9.6ppt) No change	+1.1 ppt (-10.2ppt - +12.4ppt) No change	
		Pacific young people	17.3% R	14.2% R	23.8%	+9.6 ppt (-2.6ppt - +21.9ppt) No change	+6.5 ppt (-8.0ppt - +21.0ppt) No change	
		Disabled young people	40.1% R	45.9% R	29.3%	-16.6 ppt (-42.5ppt - +9.2ppt) No change	-10.8 ppt (-37.6ppt - +16.0ppt) No change	
Criminal offending	Offending rates per 10,000 children and young people aged 10-17 – A	All children and young people	181.9 R	163.1 R	140.3	-22.8 ppt Improved	-41.6 ppt Improved	Youth Justice Indicators, Ministry of Justice
		Māori children and young people	392.6 R	350.8 R	306.8	-44.0 ppt Improved	-85.8 ppt Improved	
		Pacific children and young people	153.4 R	132.1 R	115.1	-17.0 Improved	-38.3 Improved	

Key	S	A	R	Ppt
	Based on a representative sample	Based on administrative data	Data revised since last reported	Percentage point change

Data Notes

Demographic data

The outcomes data for disabled children and young people is mostly from survey or sample sources that use a version of the Washington Group Short Set of questions to identify disability. More information on the Short Set of questions is available at

<https://www.whaikaha.govt.nz/support-and-services/guidance-and-resources/resources-for-academics/an-explanation-of-the-washington-group-short-set-of-questions-on-disability>.

Survey data notes

Household Economic Survey

The Household Economic Survey (HES) is the data source for statistics relating to child poverty, housing affordability and housing quality for 2017/18 to 2023/24. Information on the sample sizes for each survey is available at www.stats.govt.nz.

Previously published statistics from the HES for 2018/19 to 2023/24 were revised in 2026 as HES weights were updated based on the most up-to-date estimated resident population. This is a standard process that follows statistical best practice and occurs roughly every five years – after the latest census-based population estimates are available. [Applying the Stats NZ revisions policy to outputs from the Household Economic Survey](#) sets out Stats NZ's policy for updating household economic data. [Household Economic Survey population rebase: Year ended June 2019 to 2024](#) provides further information on the population rebase and its impact on estimates.

Ethnicity data is captured using total response ethnicity. People were able to identify with more than one ethnic group, therefore figures will not sum to the total population.

The baseline year of reporting is different across different population groups. The baseline year for Māori and Pacific children is 2018/19 and the baseline year for children impacted by disability is 2019/20.

Household Income and Living Survey

The Household Income and Living Survey (HILS) was established to replace the Household Economic Survey from July 2024. Key differences between the two surveys for users to be aware of relate to the collection of material wellbeing data and measurement of material hardship; the questions used to derive disability status; and which properties are in scope for the collection of expenditure on housing costs. More information on these changes is available in [About the transition from the Household Economic Survey to the Household Income and Living Survey | Stats NZ](#).

The HILS was conducted between July 2024 and June 2025. Households were asked to report income and housing costs expenditure for the 12 months prior to interview. This means that for some households, income refers to income received in the 2023/2024 year.

The HILS has a target sample size of 17,000 households and achieved a sample size of approximately 17,892 households for the year ended June 2025.

Like all surveys, estimates are subject to some uncertainty because not everyone in New Zealand was surveyed. This range of uncertainty should be considered when looking at year-on-year changes. Stats NZ encourages users to look at trends over several years where possible. Small changes year-on-year are unlikely to be statistically significant because they fall within the range of expected uncertainty.

Ethnicity data is captured using total response ethnicity. People were able to identify with more than one ethnic group, therefore figures will not sum to the total population.

The questions used to derive disability status were changed from HES to HILS. Statistics for disabled children and children in disabled households in 2024/25 should be understood in the context of the disability questions changing, and the impact on the age composition of disabled children. More information is available in [About the transition from the Household Economic Survey to the Household Income and Living Survey | Stats NZ](#).

[Child poverty statistics: Year ended June 2025 – technical appendix](#) provides more information on the survey methodology and analysis of data quality.

New Zealand Health Survey

The New Zealand Health Survey is a sample survey. This means that a representative sample of households and people are selected from the New Zealand population. Sampling error arises because only a small part of the New Zealand population is surveyed, rather than the entire New Zealand population. Because of this, the results of the survey might be different from the experiences of the entire New Zealand population. The size of the sampling error depends on the sample size, the size and nature of the estimate, and the design of the survey.

Confidence intervals are calculated at the 95% confidence level. Significance is calculated on age-standardised figures. This controls for changes in age structure over time. Significance in the report is on age-standardised figures. Differences and confidence intervals included in the report are based on non-adjusted figures, so there may be a significant movement that includes 0 in the confidence interval, or a non-significant movement that doesn't include 0 in the confidence interval. The lower and upper bounds of the percentage point difference are included for reference. The bounds represent the range within which the true percentage point difference between years is likely to lie, with 95% confidence. Small discrepancies between the reported prevalences and the calculated percentage-point differences can occur because differences are calculated on unrounded prevalences.

From 2019/20 to 2023/24 the achieved sample was smaller than designed; this was due to disruptions caused by the COVID pandemic and Cyclone Gabrielle. Rates have been suppressed where they are based on very small numbers (sample denominator is less than 30 people) or a reasonable estimate of the true rate cannot be made (relative sampling error is over 100%). The 2024/25 survey year onwards has been decreased by 30%, to approximately 9,000 adults and 3,000 children.

Data by ethnicity is derived using total response ethnicity. This means that respondents can appear in, and contribute to, the published statistics for more than one ethnic group.

Data for disabled children in the New Zealand Health Survey uses a different age range of children, children aged 5-14 years, compared to children aged 0-14 years.

More information is available at <https://www.health.govt.nz/statistics-research/surveys/new-zealand-health-survey>.

Youth Health and Wellbeing Survey

The Youth Health and Wellbeing Survey (YHWS) is New Zealand's largest, nationally representative survey of young people aimed at understanding youth health and wellbeing.

The 2021 Youth Health and Wellbeing Survey What About Me? surveyed 7,209 young people years 9 to 13 (aged 12 to 18) in their schools during 2021. Another 502 youth of the same age completed surveys in their communities (e.g. at alternative education).

The 2025 YHWS is the sixth version of this survey, and represents the merging and continuation of the 2021 What About Me? YHWS and Youth2000 questionnaires and survey streams, to produce a single survey that will allow for the tracking of youth health and wellbeing trends from this 25-year legacy onward, with plans to conduct this survey every three years. In the 2025 YHWS, around 9,400 young people, aged 13 to 19, completed digital questionnaires in school settings across Aotearoa New Zealand between March and September 2025. The survey elicits information that can only be obtained by asking young people directly, in an anonymous and safe way.

The 2025 YHWS results are based on valid responses from young people, and does not include responses 'not sure' or 'prefer not to say'. This is consistent with the reporting on the 2021 What About Me? Survey iteration.

More information is available on <https://www.msd.govt.nz/about-msd-and-our-work/publications-resources/consultations/youth-health-and-wellbeing-survey-results/index.html>.

Responses in the 2021 What About Me? YHWS were based on a score of 7-10, out of a scale of 1-10 for response options. Responses in the 2025 wee based on a response of agree or strongly agree, out of a scale of strongly disagree to strongly agree.

Results from the 2025 YHWS have not been compared to the results from the 2021 Youth Health and Wellbeing Survey 'What About Me?'. Comparisons over time allow insights into longer term changes in experiences or sentiments of the population. However, comparability between years has been affected by changes to previous question wording and response options, and wider factors, such as the COVID-19 pandemic and lockdown. Therefore, it is important to consider one-off results within the context of the longer-term trend.

Data Notes

CPRI data notes

Housing Affordability

2024/25 is the third year that the Housing Affordability indicator focuses on children in low-income (Quintiles 1-2) households. This is different from previous years, which look at children (aged 0-17) living in all households spending more than 30% of their disposable income on housing costs. Children living in households in Income Quintiles 1 and 2 are children in households living in the bottom 40% of income distribution. This change was a key recommendation of the statutory review of the CPRI's completed in 2022. This change addresses a key limitation of the original housing affordability CPRI: that it included households on high incomes for whom spending 30% (or even 40 or 50%) of disposable income on housing was very unlikely to place that household under significant financial stress. The indicator may not reflect other factors related to affordability, such as household crowding to manage housing costs.

The current source of the measure is the Household Income and Living Survey (HILS). The properties in scope for the collection of expenditure on housing costs changed in the 2024/25 HILS onwards. Stats NZ note the change to how housing costs are collected and derived may have an impact on comparability between HES and HILS for specific, detailed breakdowns, and may have had a small impact on this measure. More information is available in [About the transition from the Household Economic Survey to the Household Income and Living Survey | Stats NZ](#).

The HILS survey does not capture data on children and households in non-private dwellings, for example emergency housing. Stats NZ estimate the survey findings exclude an estimated 99,390 people in non-private dwellings (of which 14,880 are children under 18 years) and 3,760 people who live on offshore islands excluding Waiheke. Stats NZ is currently assessing the feasibility of adjusting the target population to include non-institutionalised people living in non-private dwellings such as emergency and temporary accommodation. More information on the sample is available in [Child poverty statistics: Year ended June 2025 – technical appendix](#).

Forms of government-supported housing include social housing, transitional housing and emergency housing.

School Attendance

Regular attendance refers to the percentage of half-days students who were present in the requested time period. For example, students counted under "Attending Regularly" means >90% of a student's half-days within the requested time period were marked as "Present". Data was based on Term 2 attendance collection. Due to the unusual circumstances of the COVID-19 pandemic in 2020, Term 2 2020 data represents the last 7 weeks of Term 2 (18 May 2020 to 3 July 2020) when restrictions lifted in Alert Level 2. During the first 5 weeks of Term 2, 2020 New Zealand was at COVID-19 Alert Level 4 and students were engaged in at home learning.

More information about Regular attendance reporting changes is available at <https://www.educationcounts.govt.nz/statistics/attendance>.

Education data uses total response ethnicity; students who identified in more than one ethnic group have been counted in each ethnic group. Ethnic groups should not be summed as this could lead to double counting of some students.

Māori Medium pathways are education pathways that teach through the medium of te reo Māori. School leavers who were predominantly learning in te reo Māori were in Māori Language Immersion Levels 1 or 2 in their last year at school, being taught in te reo Māori at least 51% of the time. The smaller number of students learning in te reo Māori at least 51% of the time mean that there is more variation in the data. More information is available at <https://www.educationcounts.govt.nz/statistics/school-leavers/maori-language-levels>.

The Schools Equity Index is based on a statistical model that estimates the extent to which a school's students face socioeconomic barriers that could affect their school achievement.

This report uses EQI bands to reflect the socioeconomic barriers to achievement that students at a school face, relative to students at other schools. There are seven School Equity Index Bands, each containing approximately the same number of schools. Schools are placed into a band based on their Equity Index number. The School Equity Index Band 'Fewest' indicates students at these schools, on average, have the fewest socioeconomic barriers to achievement relative to students at other schools. The School Equity Index Band 'Most' indicates students at these schools, on average, have the most socioeconomic barriers to achievement relative to students at other schools. Not all schools have an Equity Index Band, these schools have been excluded from this analysis.

While the Equity Index Bands and Groups will be introduced for socioeconomic reporting on schools for data from 2023 and beyond, in some situations it is informative to compare data from 2023+ with earlier years. The Equity Index and School Decile are different socioeconomic measures and are not directly comparable. To allow comparison, the Ministry uses the Equity Index for 2023 funding with education data from 2019-2022. This allows the Ministry to extend time-series that use the Equity Index by up to four years prior to the introduction of the index itself.

More information is available at: https://aria.stats.govt.nz/aria/?_ga=2.128875657.441005542.1716936997-1611606262.1660098368#ClassificationView:uri=http://stats.govt.nz/cms/ClassificationVersion/YVqOcfHSlquKkT17.

Changes in numbers/rates for ethnicity should be viewed with caution due to the increase of unknown ethnicity over time.

More information on the indicator is available at <https://www.justice.govt.nz/justice-sector-policy/research-data/justice-statistics/youth-justice-indicators/>.

Potentially avoidable hospitalisations

Potentially avoidable hospitalisations (PAH) are hospitalisations of children for illnesses and injuries that could potentially have been prevented by more effective primary health care services, or broader public health and social policy interventions. PAH include respiratory conditions, gastroenteritis, skin infections, tooth decay, vaccine preventable illnesses, and physical injuries (both intentional and unintentional). Data is sourced from the National Minimum Data Set. Diagnostic and external cause codes for the rates reported in this report are derived from the 11th edition of the International Classification of Diseases (ICD-11). Previous PAH rates reported used the 8th edition.

The population figures provided are estimates based on data from Stats NZ. Estimates for the financial year are calculated as the average of the preceding and following calendar year's estimates. For the 15-17 year old age group, specific deprivation level estimates from Stats NZ are unavailable. Therefore, the national-level weighting for 15-17 year olds has been applied to the 15-19 year age group to determine these estimates for each deprivation quintile, based on data from the 2018 census. Ethnicity data is categorised using prioritised ethnicity.

An injury is defined as a hospitalisation with an ICD code starting with 'S' or 'T'. Injuries resulting from medical treatment and sequelae are excluded.

Previous rates are revised each year, as more up to date hospitalisation or population information becomes available.

A methodology error was identified in 2024 that affected earlier rates that were reported in previous Annual Reports. Earlier rates were undercounted due to a number of events being incorrectly identified as transfers and excluded. Events related to a condition that the child has previously been hospitalised for were only counted as one hospitalisation.

The methodology was updated in 2023/24 to expand the age range covered, to refine how events are grouped and to include all publicly-funded hospitalisations. The age range for the CPRI was expanded in 2024, from children aged 0-14 to children and young people aged 0-17.

The described changes mean that the presented results are not comparable with earlier published results in previous Annual Reports. For more information contact analytics@health.govt.nz.

Data Notes

Child and Youth Wellbeing Strategy indicator data notes

Material hardship

For 2017/18–2023/24, material hardship was measured in the Household Economic Survey as the percentage of people with a DEP-17 index score of six or more. For 2024/25, it was measured in the Household Income and Living Survey as the percentage of people with an MH-18 score of seven or more.

[Measuring child poverty: Material hardship in the Household Income and Living Survey](#) has a full list of the MH-18 items and information about the methodology used to derive material hardship rates, including differences between the HES and the HILS.

Material hardship rates by disability status for children should not be compared between the Household Economic Survey (2019/20 to 2023/24) and Housing Income and Living Survey (2024/25 onwards), due to the combination of changes to the disability questions and the measurement of material hardship. A new time series begins from 2024/25. More information is available in [About the transition from the Household Economic Survey to the Household Income and Living Survey | Stats NZ](#).

Increased access to maternity care

Percentage of people giving birth who reported their smoking status that were smoking two weeks after the birth of their child will no longer be reported on. The Primary Maternity Services Notice 2021, which came into force on 29th November 2021, states that data on smoking status is not required to be collected. The Primary Maternity Services Notice 2021 introduced changes to the terms and conditions on which maternity providers can claim for providing primary maternity services. This revokes the Primary Maternity Services Notice which came into effect on 1 July 2007 and its amendments. There are underlying changes to the way some types of data are now captured (such as smoking status or breastfeeding and well child referral). It is important to consider these changes when comparing data pre and post November 2021. Further information on the Primary Maternity Services Notice 2021 is available on the Ministry of Health's website. <https://www.health.govt.nz/publications/primary-maternity-services-notice-2021>.

National Maternity Collection data uses prioritised ethnicity, at the time of delivery.

Housing Quality

The Housing Quality indicator is derived from the Household Economic Survey from 2019/20 to 2023/24 and the Household Income and Living Survey in 2024/25. The design of the relevant question changed from HES to HILS from a single question "Does your accommodation have no problem, a minor problem or a major problem with dampness or mould?" to a multi-part question that first asks whether there is a problem and then whether that problem is major or minor. Differences between 2024/25 data and the previous data reflect both real-world change and question design change.

Feeling loved

Responses in the 2025 Youth Health and Wellbeing Survey (YHWS) are only based on responses to the main survey after 26/05/2026 as the question was not included in earlier versions.

Psychological distress

The results from the 2025 YHWS have been based on approaches from Australia and set a cut-off threshold for severe distress by counting numbers of people scoring 19 or higher out of a possible 30. The numbers reported here represent high levels of psychological distress. More information is available at [Psychological distress in community-dwelling individuals living with severe and persistent mental illness - Jack C Collins, Ricki Ng, Sara S McMillan, Jie Hu, Claire L O'Reilly, Amanda J Wheeler, Sarira El-Den, 2023](#) and [4817.0.55.001 - Information Paper: Use of the Kessler Psychological Distress Scale in ABS Health Surveys, Australia, 2007-08](#).

Self harm

In the 2025 YHWS, a young person was asked "During the last 12 months have you ever... Deliberately hurt yourself or done anything you knew might harm you (but not kill you)?" Responses capture young people who responded yes (this includes once, two times, and three or more times).

Social-emotional and self-management skills

The results from the 2025 YHWS for the social-emotional skills measure were from a derived variable, based on responses to questions a, c, e and f below. The results from the 2025 YHWS for the self-management skills measure were from a derived variable, based on responses to questions b, d, e and f below.

"How much do you agree with the following statements:

- a) When people disagree, fight, or have an argument, I work to understand both sides
- b) If I am really busy and have lots to do, I am good at making a plan and working to get things done
- c) I like cooperating and doing things with others (e.g. sport, games, projects, study groups, orchestra, etc.)
- d) When faced with a problem, I don't give up even if I get frustrated
- e) I talk and actively learn about big topics in the world (e.g. the economy, climate change, gender equality, war, politics, poverty)
- f) If I see something wrong happening (e.g. someone stealing, someone being hurt, etc.) I do something about it."

Early Childhood Education

Attendance data is drawn from the Ministry of Education's Early Learning Information (ELI) system. This is daily attendance data provided by each service in New Zealand and linked to each child's National Student Number. Some services (primarily ngā kōhanga reo and playgroups) do not use ELI to report daily attendance data. Therefore, this data is not available to be included in the Participation Intensity Measure.

The Participation Intensity Measure was developed by the Ministry of Education in 2019 and is the percentage of children attending early childhood education for 10 or more hours a week on average at age 3 and at age 4. The Participation Intensity Measure uses Total Response Ethnicity, where a child is counted once under each ethnicity they belong to (as nominated by the parent/caregiver enrolling them at the early childhood education service) and once under the total. Children have been grouped into Māori, Pacific, and total for the purposes of reporting.

From 2019–2022, the population of children by age is taken from Stats NZ, National ethnic population projections, by age and sex, 2013(base)-2038 update, 50th percentile (median) scenario. For 2023 onwards, the population of children by age is taken from Stats NZ, National ethnic population projections, by age and sex, 2018(base)-2048 update, 50th percentile (median) scenario.

The Participation Intensity Measure is calculated on a June year - for example, June 2025 covers attendance from 1 July 2024 to 30 June 2025.

More information is available at: <https://www.education.govt.nz/education-professionals/early-learning/running-ecce-centre/early-learning-information-eli-system>.

Experiences of discrimination

The results from the 2025 YHWS were from a derived variable, based on responses to questions on experiences of being treated unfairly or made to feel different in the last 12 months based on ethnicity, gender or sexual identity, or something else about the young person's identity. People were only excluded from the calculation if they did not provide at least one valid answer to the three questions.

Languages spoken

In the 2025 YHWS, a young person was asked if they speak English, te reo Māori, NZSL or another language. The results are derived from young people choosing two or more response options 'English', 'Māori', 'NZSL', or 'another'. Responses capture young people who identified that they speak at least two languages. The level of fluency captured may be different for different young people.

Data Notes

Child and Youth Wellbeing Strategy indicator data notes

Material Wellbeing

The Material Wellbeing Index for 2024/25 has not been produced while the performance of the index is assessed for the Household Income and Living Survey.

Harm against children

Reports of concern that were referred for further assessment or investigation have been assessed by a social worker to decide if further action is required by Oranga Tamariki. Some children and young people may have more than one report of concern requiring further action in the period shown.

The "Total Referred for Further Assessment or Investigation" data show the sum of children and young people with reports of concern requiring further action during the period. More than one report of concern can be referred to further assessment or investigation and each will be counted.

The "Distinct Children and Young People" tables show the total children and young people, with one or more reports of concern requiring further action, counted only once during the period.

Measures of ethnicity in the Oranga Tamariki Reports of Concern data may change over time, therefore totals for each ethnic group will change depending on the date the data was extracted. Ethnicity data for these tables reflect the most recent categories and most recent extraction date in 2025. Oranga Tamariki reports statistics prioritised ethnicity. Children identifying as more than one ethnicity are counted once. For reporting purposes, Oranga Tamariki reports distinct children and young people according to the following ethnic groups:

- Māori – children who identify Māori as one of their ethnicities;
- Pacific – children who identify Pacific (but not Māori) as one of their ethnicities;
- New Zealand European and Other – children who do not identify Māori or Pacific as any of their ethnicities. This includes New Zealand European, European, Asian, Middle Eastern/Latin American/African and other ethnicities.

Serious injury

The Serious Injury Outcomes Indicator data from Stats NZ for 2024/25 is provisional and is reported by calendar year. Data for 2025 is not yet available. The data is included in the corresponding financial year column, i.e. the 2024/25 data is from the 2024 calendar year.

Child mortality

The Number of deaths (all causes) of children and young people data is reported by calendar year. Data for 2023/24 and 2024/25 is not yet available. Updated results for these measures will be published on the Mortality Webtool (<https://tewhatuora.shinyapps.io/mortality-web-tool/>) as they become available. The most recent data is included in the in the corresponding financial year column, i.e. the 2022/23 data is from the 2022 calendar year. 2022 calendar year data is preliminary.

Prenatal health – this was provided by MoH

Note that following the Primary Maternity Services Notice 2021, which came into force on 29th November 2021, data on smoking status is not required to be collected. The Primary Maternity Services Notice 2021 introduced changes to the terms and conditions on which maternity providers can claim for providing primary maternity services. This revokes the Primary Maternity Services Notice which came into effect on 1 July 2007 and its amendments. There are underlying changes to the way some types of data are now captured (such as smoking status or breastfeeding and well child referral). It is important to consider these changes when comparing data pre and post November 2021. Further information on the Primary Maternity Services Notice 2021 is available on the Ministry of Health's website.

Subjective health status

The Potentially Avoidable Hospitalisations indicator in the Child and Youth Wellbeing Strategy is a different age range to the current CPRI and Strategy indicator. It looks at children aged 0-14. The current CPRI and Strategy indicator looks at children and young people aged 0-17.

Self harm and suicide

The statistics on the rates of deaths from suspected self-harm can fluctuate significantly from year to year. This is due to small counts, especially in smaller population groups. The statistics based on these numbers should be interpreted with caution. Understanding trends in rates is only possible over long periods of time (5–10 years, or even longer for small population groups). The groups presented here (young people aged 15-25 years by ethnicity) leads to very small counts. Large fluctuations in rates are due to the small number of events for these groups.

Rates from previous years have been revised due to newer population data. This means data for Māori and Pacific young people can be included for 2023/24.

Participation in employment, education and training

Participation in employment, education and training data for all young people and Māori young people is based on annual averages for the year ended March quarters. Due to annual averages covering a full year, this includes seasonal highs and lows and is less likely to vary quarter on quarter. In addition to this, the larger sample size results in slightly smaller sample errors, increasing the likelihood of identifying genuine changes in small groups over time. Participation in employment, education and training for disabled young people is based on data from the June quarter each year, as this is the only quarter in which disability information is collected in the Household Labour Force Survey.

Representation of young people's voices

Average daily elector enrolment data is measured over the fiscal year. Enrolment is also for purposes of by-elections and local authority elections, not just general elections. Elections were held in two of the years covered by the annual reporting period: 2020/21 and 2023/24. The total numbers of voters included in the voter participation statistics are slightly lower than in the official results because of disallowed votes, dual votes, and clerical errors made in scanning or marking the master roll.

Making positive choices

There is a break in the series between 2019/20 and 2020/21 on the measure on cannabis use in the New Zealand Health Survey, due to a change in the questions. In 2020/21, the question and drug categories were updated to align with the Alcohol, Smoking and Substance Involvement Screening Test (ASSIST). This included capturing drug use other than as prescribed, such as to get high, or taken more frequently or at a higher dose than specified.

Hazardous drinking data is measured using the 10-question Alcohol Use Disorders Identification Test (AUDIT) developed by the World Health Organization (Babor et al 2001). The AUDIT is a 10-item questionnaire that covers three aspects of alcohol use: alcohol consumption, dependence and adverse consequences. Hazardous drinkers are those who obtain an AUDIT score of 8 or more, representing an established pattern of drinking that carries a high risk of future damage to physical or mental health.

Youth offending

The offending rate measures the number of children and young people aged 10 to 17 who Police take action against per 10,000 population. Police action includes warnings, alternative actions, Family Group Conferences, and prosecution in the Youth Court.

Data uses 'Total response ethnicity', which includes all people in each ethnic group. Where a person reported more than one ethnic group, they have been counted in each applicable group. As some people have multiple recorded ethnicities this will result in the sum of ethnicities being greater than the total number of people each year. Ethnicity information is sourced from Education data as part of the Youth Justice National Minimum Dataset. When this is not available, data from justice sector agencies is used. Ethnicity classification uses level 1 of the Ethnicity New Zealand Standard Classification 2005 V2.1.0.

