

Regional overview West Coast

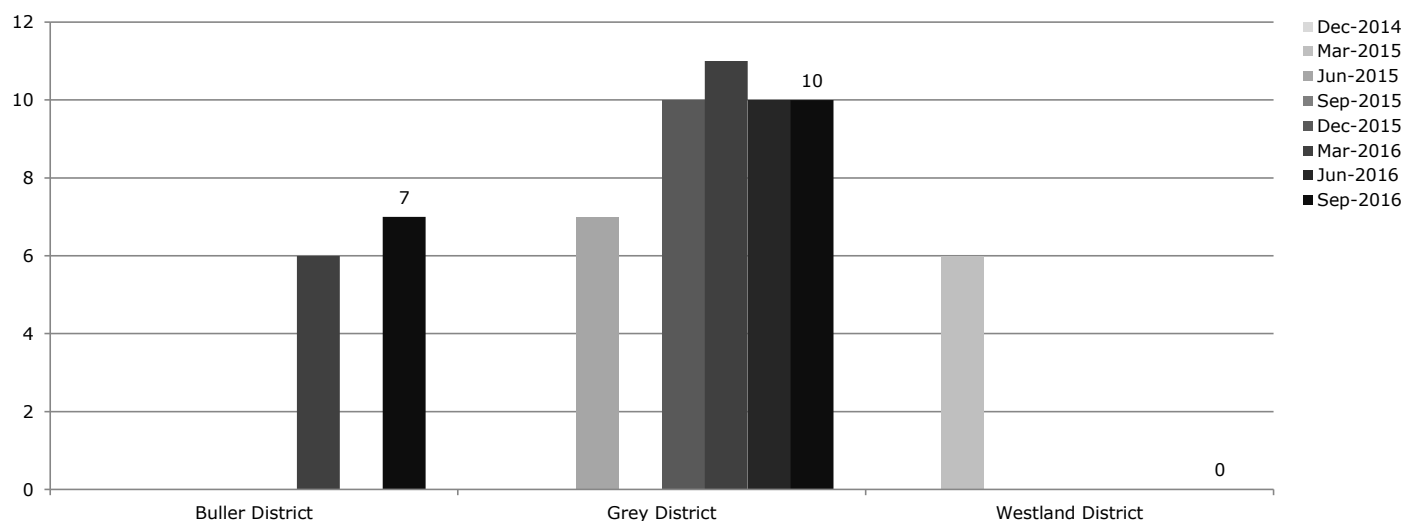
Purchasing intentions - additional income-related rent subsidy (IRRS) places

Area	Number of bedrooms				TOTAL
	1	2	3	4+	
Buller District	0	0	0	0	0
Grey District	5	0	0	0	5
Westland District	0	0	0	0	0
West Coast total	5	0	0	0	5

Purchasing intentions - change within the base of existing IRRS places

Area	IRRS places as at 30 Sept 2016	Change within the base, by number of bedrooms			
		1	2	3	4+
Buller District	104	Maintain	Maintain	Decrease	Decrease
Grey District	124	Increase	Maintain	Decrease	Decrease
Westland District	40	Maintain	Maintain	Decrease	Decrease
West Coast total	268				

Social housing register - trend over the last two years by TLA



* The number shown is the number on the register as at 30 September 2016.

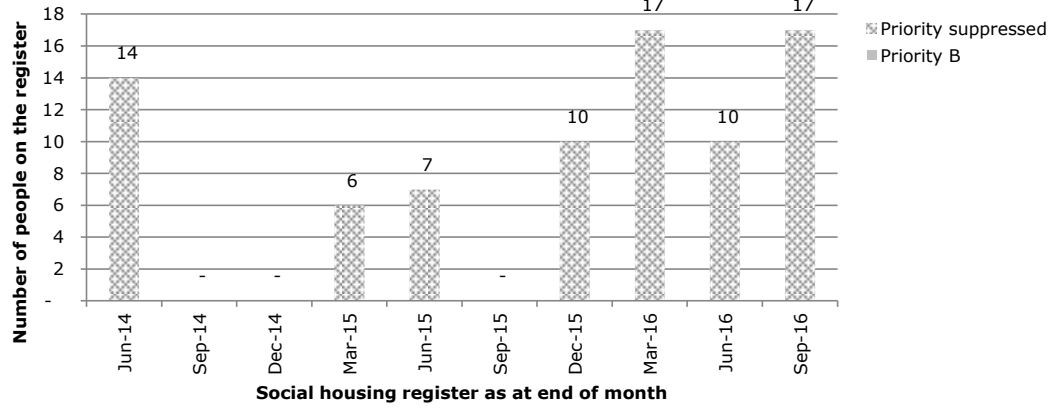
* Where there are 5 people or fewer on the register in a TLA, this will be appear as zero in the graph.

* Source: Ministry of Social Development. (2016). Social housing register. Retrieved from: <http://housing.msd.govt.nz/information-for-housing-providers/register/index.html>

Demand in West Coast

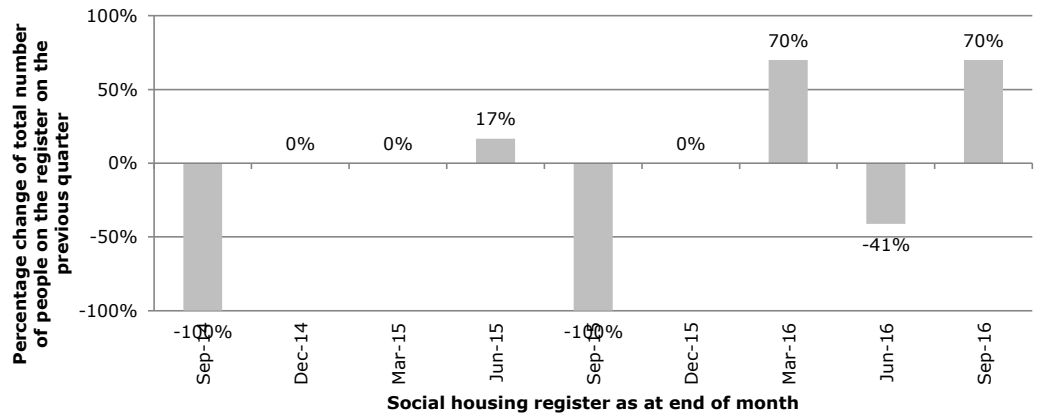
Social housing register by priority level - trend for the region

* Source: Ministry of Social Development. (2016). Social housing register. Retrieved from: <http://housing.msd.govt.nz/information-for-housing-providers/register/index.html>



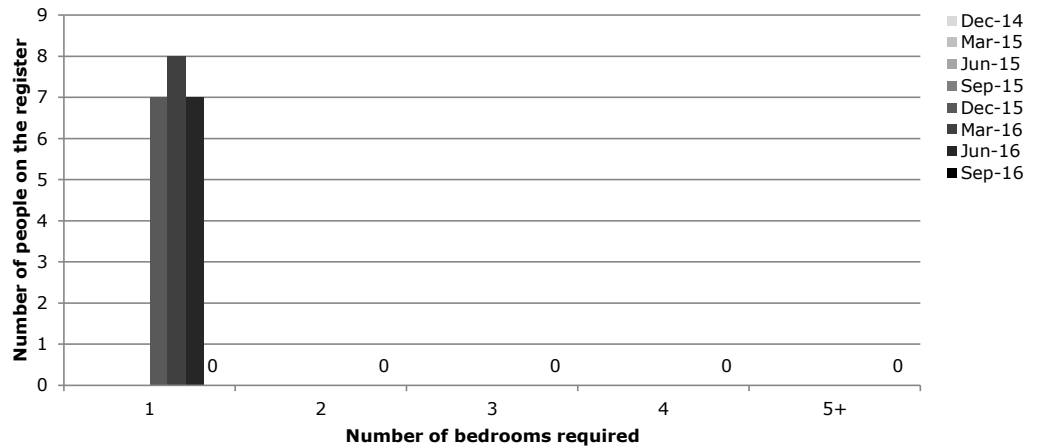
Percentage change on total number of people on the register in previous quarter - trend for the region

* Source: Ministry of Social Development. (2016). Social housing register. Retrieved from: <http://housing.msd.govt.nz/information-for-housing-providers/register/index.html>



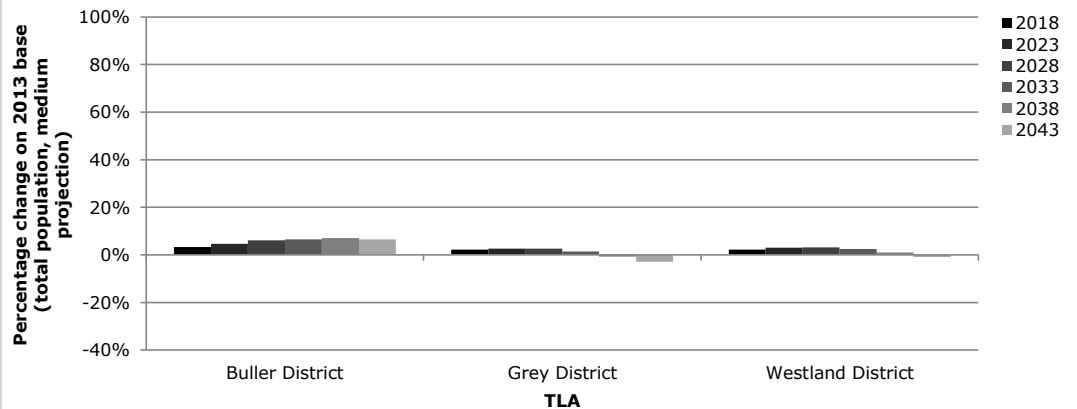
Types of houses required by people on the register - trend for the region

* Where there are 5 people or fewer on the register in a TLA, this will be appear as zero in the graph.
* Source: Ministry of Social Development. (2016). Social housing register. Retrieved from: <http://housing.msd.govt.nz/information-for-housing-providers/register/index.html>



Population projections - percentage increase on 2013 base, by TLA

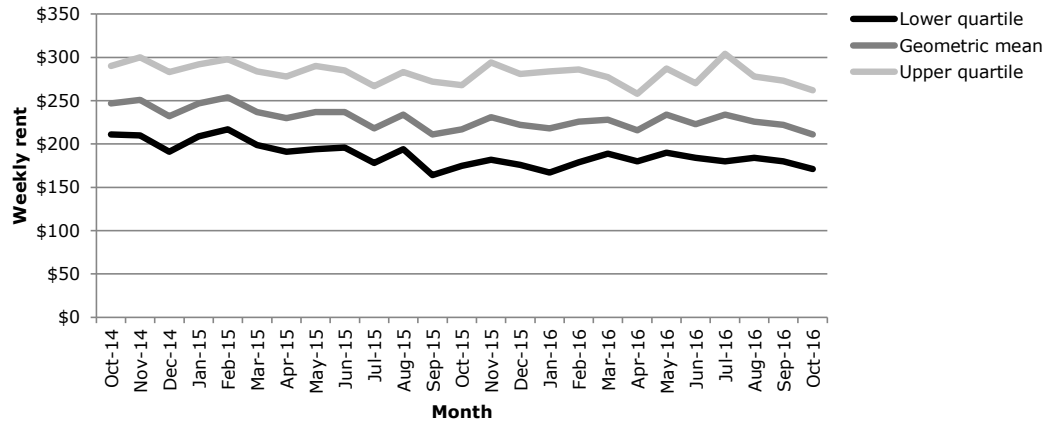
* Projected percentage increase in total population on 2013 base (medium projection), for TLAs in the region.
* Source: Statistics New Zealand.



Private market supply in West Coast

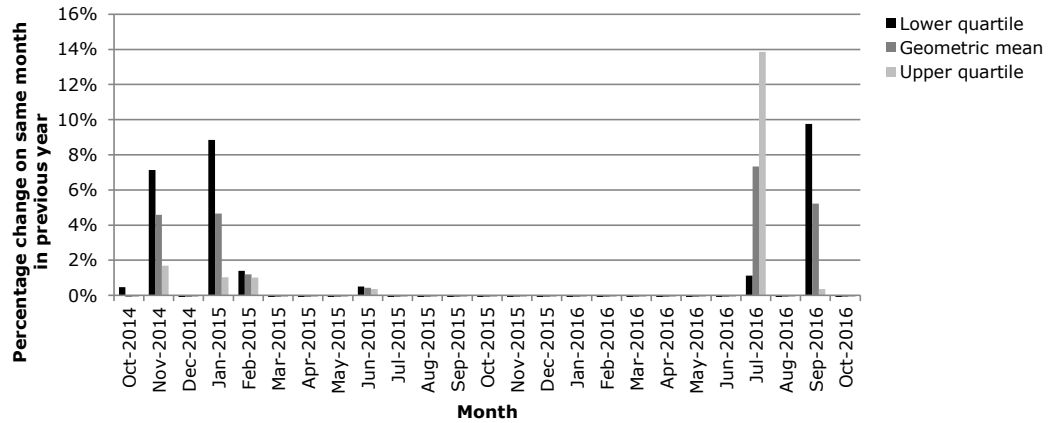
Weekly rental - trend of absolute values

* Weekly rent, based on new bonds lodged each month.
 * Data relates to all rentals, not just social housing.
 * Source: Ministry of Business, Innovation and Employment. (2016). Rental bond data. Retrieved from: <http://www.mbie.govt.nz/info-services/housing-property/sector-information-and-statistics/rental-bond-data>



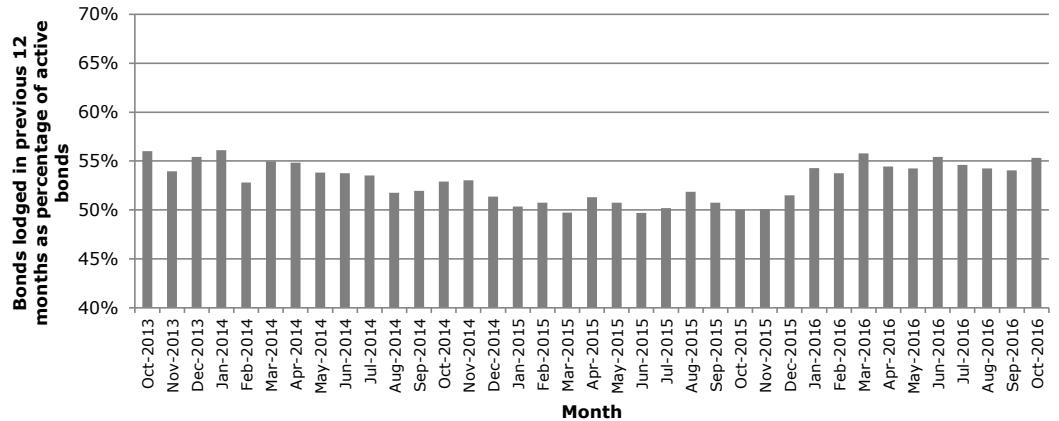
Weekly rental - percentage change on same month in previous year

* Graph shows percentage change on same month in previous year.
 * Weekly rent, based on new bonds lodged each month.
 * Data relates to all rentals, not just social housing.
 * Source: Ministry of Business, Innovation and Employment. (2016). Rental bond data. Retrieved from: <http://www.mbie.govt.nz/info-services/housing-property/sector-information-and-statistics/rental-bond-data>



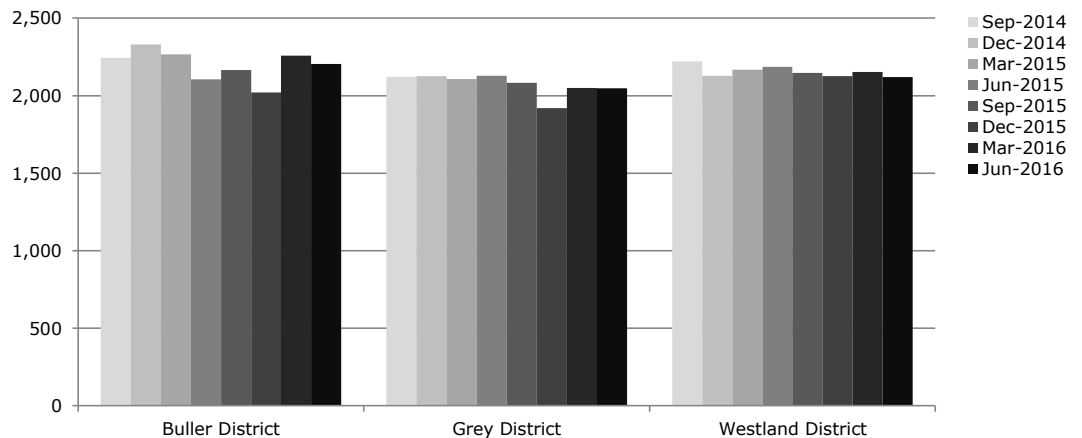
Bonds lodged in previous 12 months as percentage of active bonds

* Data relates to all rentals, not just social housing.
 * Source: Ministry of Business, Innovation and Employment. (2016). Rental bond data. Retrieved from: <http://www.mbie.govt.nz/info-services/housing-property/sector-information-and-statistics/rental-bond-data>



QV Quarterly House Price Index for TLAs in this region

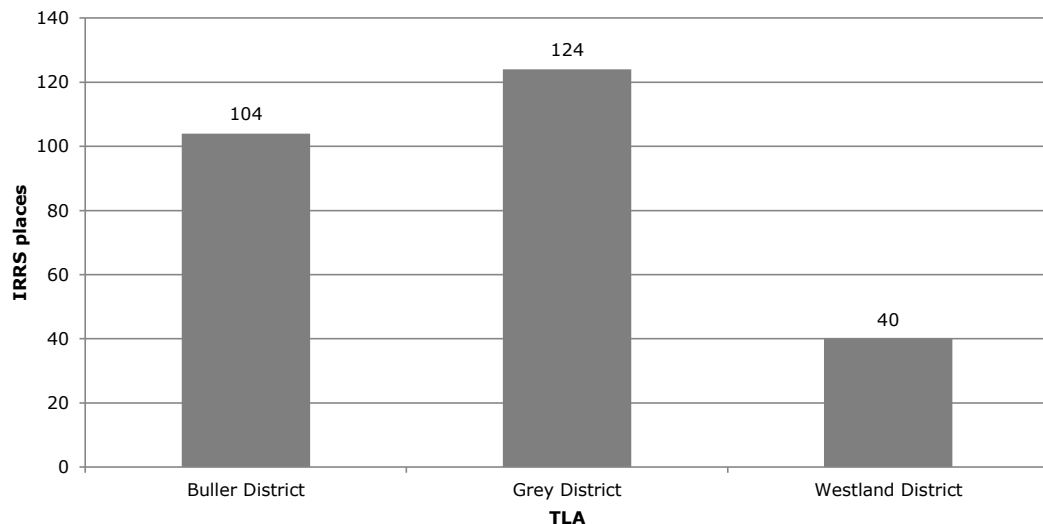
* Data relates to all dwellings (houses, flats, apartments etc).
 * Data for Auckland is reported by QV for the TLA, and then broken down under the former council structure.
 * Source: Quotable Value. (2016). Residential House Price Index. Retrieved from: <https://www.qv.co.nz/resources/residential-house-price-index>



Social market supply in West Coast

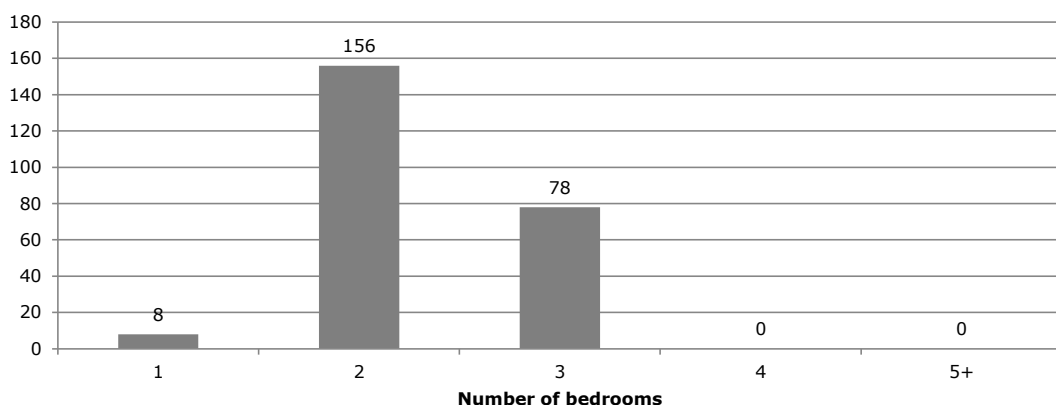
Current IRRS places by TLA

* Data covers IRRS places provided by CHPs and HNZ, as at 30 September 2016.
 * Data provided by MSD.



Current IRRS places in West Coast - by number of bedrooms

* Data covers IRRS places provided by CHPs and HNZ, as at 30 September 2016.
 * Where there are 5 or fewer tenancies, this will appear as 0 in the graph.
 * Data provided by MSD.



Current IRRS places by TLA and number of bedrooms

* Data covers IRRS places provided by CHPs and HNZ, as at 30 September 2016.
 * Where there are 5 or fewer tenancies, this will appear as an empty cell in the table.
 * Data provided by MSD.

	Number of bedrooms				
	1	2	3	4	5+
Buller District		67	22		
Grey District	8	70	38		
Westland District		19	18		

Overview of base, pipeline, and purchasing intentions for IRRS places for West Coast

* Base - refers to current number of IRRS places as at 30 Sept 2016.
 * CHP pipeline - refers to places that are either contracted or that MSD Housing Contracts team believes has a high certainty of eventuating.
 * Purchasing intentions - refers to the total number of additional IRRS places signalled in the 2016 update to the Purchasing Strategy for IRRS places.

