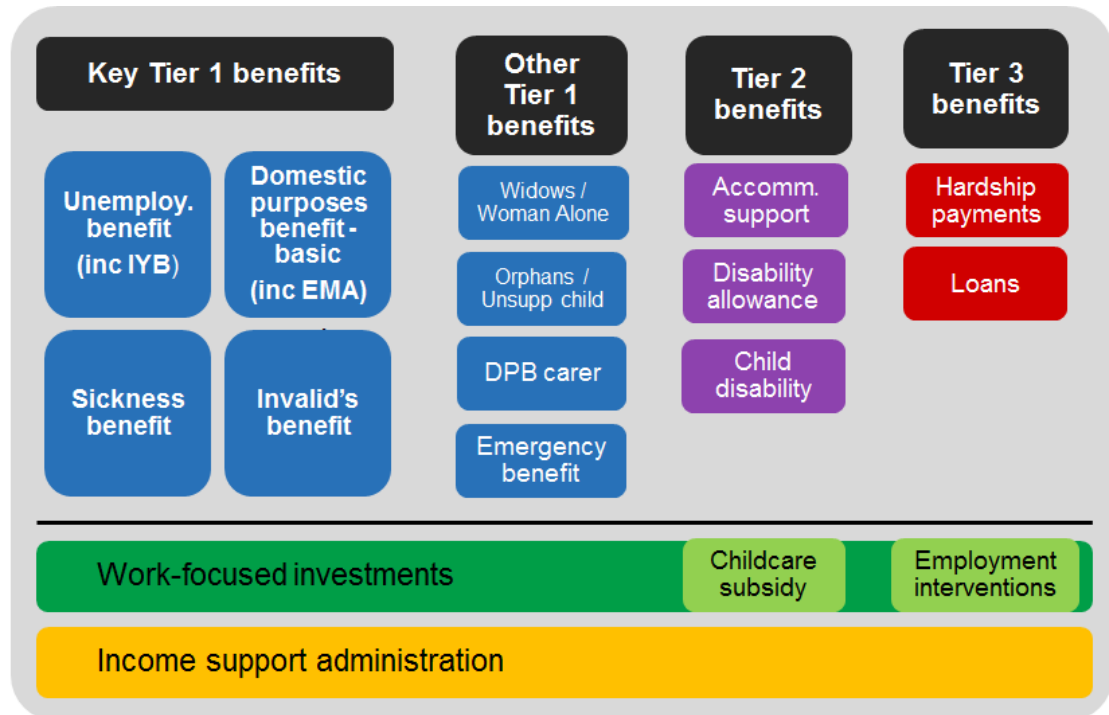


## APPENDIX D VALUATION SCOPE

Section 4 of the report describes the division of the valuation into the following components:



The table below gives further details on this categorisation. In particular, it identifies into which components some of the smaller payments have been allocated to. Note that all payments to beneficiaries aged over 65 have been excluded from scope. Further details on exact benefit codes can be found in sections 10-27 of the report.

Departmental Output Expenses	Allocation
<b>Collection of Balances Owed by Former Clients and Non-beneficiaries (M63)</b> Services to manage the collection of overpayments and recoverable assistance loans from former clients and other balances owed comprising of Student Allowance overpayments, Liable Parent Contributions, and court ordered Maintenance.	<b>Income support administration (Collections)</b> NB: NZ Super and student costs excluded
<b>Services to Protect the Integrity of the Benefit System (M63)</b> Services to minimise errors, fraud and abuse of the benefit system.	<b>Income support administration (Integrity Services)</b>

<p><b>Tailored Sets of Services to Help People into Work or Achieve Independence (M63)</b></p> <p>This appropriation is limited to delivering tailored sets of services to individuals to help them into sustainable employment, participate more fully in their community or achieve a greater level of social independence; and the management of related non-departmental output contracts.</p> <p>The composition of each set of services is determined by the individual's needs and selected from a mix of employment readiness training and support, employment placement, social support services, payment of income support and training support benefits, and referrals to other employment or social support providers.</p>	<p><b>Income support administration (Benefit processing) and Work-focused investments</b> (work-focused case management, work brokerage, etc.)</p>
<p><b>Vocational Skills Training (M63)</b></p> <p>This appropriation is limited to vocationally based skills training for working-age people through the Training Opportunities Programme.</p>	<p><b>Work-focused investment (training)</b></p>
<p><b>Non-Departmental Output Expenses</b></p>	<p><b>Allocation</b></p>
<p><b>Youth Transition Services (M63)</b></p> <p>This appropriation is limited to the provision of transition support, further training, education and employment activities for all school leavers aged 15 to 20 years.</p>	<p><b>Work-focused investment (training)</b></p>
<p><b>Life Skills and Employment-Related Training Activities (M63)</b></p> <p>This appropriation is limited to the provision of life-skills and employment-related training activities for at-risk youth within the Eastern Bay of Plenty.</p>	<p><b>Work-focused investment (training)</b> NB: In scope for 2011 valuation: but will fold into YTS in future years</p>
<p><b>Benefits and Other Unrequited Expenses</b></p>	<p><b>Allocation</b></p>
<p><b>Accommodation Assistance (M63)</b></p> <p>This appropriation is limited to the Accommodation Supplement, Special Transfer Allowance, and Away From Home Allowance to persons to cover accommodation costs, paid in accordance with the criteria set out in the Social Security Act 1964 and delegated legislation issued under that Act.</p>	<p><b>Tier 2 – Accommodation support</b></p>
<p><b>Childcare Assistance (M63)</b></p> <p>Provision of assistance for the costs of childcare that meets specific quality guidelines, where parents meet activity and income criteria set out in the Social Security Act 1964 and delegated legislation issued under that Act.</p>	<p><b>Child care subsidy</b></p>
<p><b>Disability Assistance (M63)</b></p> <p>This appropriation is limited to the Disability Allowance to persons with disability costs and the Child Disability Allowance to the caregivers of children with a serious disability, paid in accordance with the criteria set out in the Social Security Act 1964 and delegated legislation issued under that Act.</p>	<p><b>Tier 2 – Disability allowance</b> <b>Tier 2 – Child disability allowance</b></p>
<p><b>Domestic Purposes Benefit (M63)</b></p> <p>Provision of income support for sole parents, caregivers of sick or infirm people or women alone, whose domestic circumstances exclude them from fully participating in the labour force. Paid in accordance with criteria set out in the Social Security Act 1964.</p>	<p><b>Key Tier 1 Benefits – sole parent</b> <b>Other Tier 1 Benefits – widows &amp; WA</b> <b>Other Tier 1 Benefits – carers</b></p>

<p><b>Employment Related Training Assistance (M63)</b> Provision of assistance with costs of undertaking approved employment related training, which is paid in accordance with the criteria set out in delegated legislation under the Social Security Act 1964.</p>	<p><b>Employment interventions</b></p>
<p><b>Hardship Assistance (M63)</b> This appropriation is limited to Civil Defence payments, Funeral Grants, Live Organ Donors Assistance, Special Benefit, Special Needs Grants and Temporary Additional Support to provide means-tested temporary financial assistance to persons with emergency or essential costs, paid in accordance with the criteria set out in the Social Security Act 1964 and delegated legislation issued under that Act.</p>	<p><b>Tier 3 Benefits – hardship payments</b></p>
<p><b>Independent Youth Benefit (M63)</b> Provision of income support for people aged 16 or 17 years who are currently unemployed but actively seeking work, training for work, at school, or sick, injured or disabled, where it is inappropriate for them to obtain financial support from their parents. Paid in accordance with criteria set out in the Social Security Act 1964.</p>	<p><b>Key Tier 1 Benefits – Unemployment benefit</b> NB: will be broken out by age at level II stage</p>
<p><b>Invalid's Benefit (M63)</b> Provision of means-tested income support for people who are totally blind, or permanently and severely restricted in their capacity for work due to sickness, injury or disability. Paid in accordance with the criteria set out in the Social Security Act 1964.</p>	<p><b>Key Tier 1 Benefits – Invalid's benefit</b></p>
<p><b>Orphan's/Unsupported Child's Benefit (M63)</b> Provision of income support for people charged with the responsibility for the care of a child whose parents are dead or cannot be located, or suffer a serious long-term disablement that renders them unable to care for the child, or where there has been a breakdown in the child's family. Paid in accordance with criteria set out in the Social Security Act 1964.</p>	<p><b>Other Tier 1 Benefits – Orphan's/Unsupported Child</b></p>
<p><b>Sickness Benefit (M63)</b> Provision of means-tested income support for people who are not in full-time employment and are limited in their capacity for work, or who are in employment but working at a reduced level, because of sickness, injury, disability or pregnancy. Paid in accordance with the criteria set out in the Social Security Act 1964.</p>	<p><b>Key Tier 1 Benefits – Sickness benefit</b></p>
<p><b>Special Circumstance Assistance (M63)</b> This appropriation is limited to financial assistance to people in special circumstances and comprises the Clothing Allowance, and providing assistance for community costs, domestic violence and witness protection relocation, home help, social rehabilitation assistance, telephone costs paid in accordance with criteria set out in the Social Security Act 1964, and delegated legislation under that Act; and Civilian Amputees Assistance, paid in accordance with criteria set out in the Disabled Persons Community Welfare Act 1975.</p>	<p><b>Tier 3 Benefits – Hardship Payments</b></p>
<p><b>Transition to Work (M63)</b> Provision of payments to beneficiaries, low income earners, students and ex beneficiaries, who meet certain criteria, to assist in the transition from benefit to employment and the continuation of employment. Criteria are set out in relevant Welfare Programmes and Ministerial Directions pursuant to the Social Security Act 1964.</p>	<p><b>Employment interventions</b></p>

<p><b>Unemployment Benefit and Emergency Benefit (M63)</b></p> <p>Provision of means-tested assistance for people who are not in full-time employment and are available for and seeking full time employment, or engaged in approved activities. Also the provision of assistance to people who are in hardship and unable to earn enough income for themselves (and any dependent family) and cannot receive another benefit. Both forms of assistance are paid in accordance with criteria set out in the Social Security Act 1964 and delegated legislation issued under that Act.</p>	<p><i>Key Tier 1 Benefits – Unemployment benefit</i> <i>Other Tier 1 Benefits – Emergency benefit</i></p>
<p><b>Widow's Benefit (M63)</b></p> <p>Provision of means-tested income support for women whose partners have died and who do not yet qualify for New Zealand Superannuation, but meet residency and other requirements. Paid in accordance with criteria set out in the Social Security Act 1964.</p>	<p><i>Other Tier 1 Benefits – Widow's and WA</i></p>
<p><b>Redundancy Assistance (M63)</b></p> <p>This appropriation is limited to paying assistance for a limited period to people made redundant, pursuant to the conditions and criteria set out in ReStart Transitional Relief Ministerial Welfare Programme 2008 and the Social Security Act 1964.</p>	<p><i>Tier 3 Benefits – Hardship</i></p>
<p><b>Special Compensation Payment for GST increase (M63)</b></p> <p>This appropriation is limited to providing payments for recipients of Unemployment Benefit and related benefits, Sickness Benefit, Invalids' Benefit, Domestic Purposes Benefits, Independent Youth Benefit, Orphans Benefit, Unsupported Child's Benefit and Widow's Benefit, Student Allowances, New Zealand Superannuation, and Veteran's Pensions, to provide compensation between 1 October 2010 and 31 March 2011 for the increase in the rate of GST. While this is not technically a hardship payment it was treated as such due to the short term nature of the payment type.</p>	<p><i>Tier 3 Benefits – Hardship</i></p>
<p><b>Special Payment Mechanism for 1 October 2010 Tax Package (M63)</b></p> <p>This appropriation is limited to providing financial assistance so that people in receipt of financial assistance from the Ministry of Social Development who may be otherwise unintentionally financially disadvantaged by changes introduced as part of the Budget 2010 tax package will not experience a reduction in their total after tax income. This assistance will cease on 31 March 2011.</p>	<p><i>Tier 3 Benefits – Hardship</i></p>
<p><b>Non-Departmental Other Expenses</b></p>	<p><b>Allocation</b></p>
<p><b>Debt Write-downs (M63)</b></p> <p>Provision for write-downs of Crown debt administered by the Ministry of Social Development due to debt write offs or debt provisions resulting from the need to value debt in accordance with generally accepted accounting practice.</p>	<p><i>Tier 3 Benefits – Loans</i></p>
<p><b>Employment Assistance (M63)</b></p> <p>Provision of assistance to help address barriers faced by job seekers so they can become work ready, move into employment and stay in employment for longer periods of time. This employment assistance is governed by the Cabinet and Ministerial Guidelines for Employment and Training Assistance.</p>	<p><i>Work-focused investments (training)</i></p>
<p><b>Mainstream Supported Employment Programme (M63)</b></p> <p>This appropriation is limited to salary subsidies, training for participants, supervisors and placement specialists, and funding for other employment support provided by the Mainstream Supported Employment Programme.</p>	<p><i>Work-focused investments (training)</i></p>

<b><i>Out of School Care Programmes (M63)</i></b> Provision of assistance to CYF approved OSCAR programmes to assist with the establishment and/or operating costs of OSCAR programmes.	<b><i>Work-focused investments (OSCAR)</i></b>
<b><i>Canterbury Earthquake Support (M63)</i></b> This appropriation is limited to financial support for employers, and those employed on 22 February 2011, affected by the Canterbury Earthquake.	<b><i>Income support administration</i></b>
<b><i>Job Support Scheme (M63)</i></b> This appropriation is limited to providing financial assistance for a limited period for employees who have entered into an agreement with their employers to reduce their working hours on a temporary basis and to receive this assistance.	<b><i>Income support administration</i></b>
<b>Non-Departmental Capital Expenditure</b>	<b>Allocation</b>
<b><i>Recoverable Assistance (M63)</i></b> Facility for low-income earners and beneficiaries to access means-tested assistance to enable them to meet essential and immediate needs, or costs in specific circumstances. Criteria are set out in relevant Welfare Programmes and Ministerial Directions pursuant to the Social Security Act 1964.	<b><i>Loans</i></b> <b><i>NB: net of recoveries on an annual basis</i></b>