

# **Case Management Activity National Summary Report**

## **July - December 2001**

Based on 577 initial meetings,  
involving 1141 children/ youth  
throughout New Zealand  
which took place between  
July to December 2001

Ministry of Social Development  
Evaluation Unit  
Jan 2002

**Table 1: Area of Initial Meeting: National Figures**  
**(Based on 577 initial meetings conducted Jul - Dec 2001)**

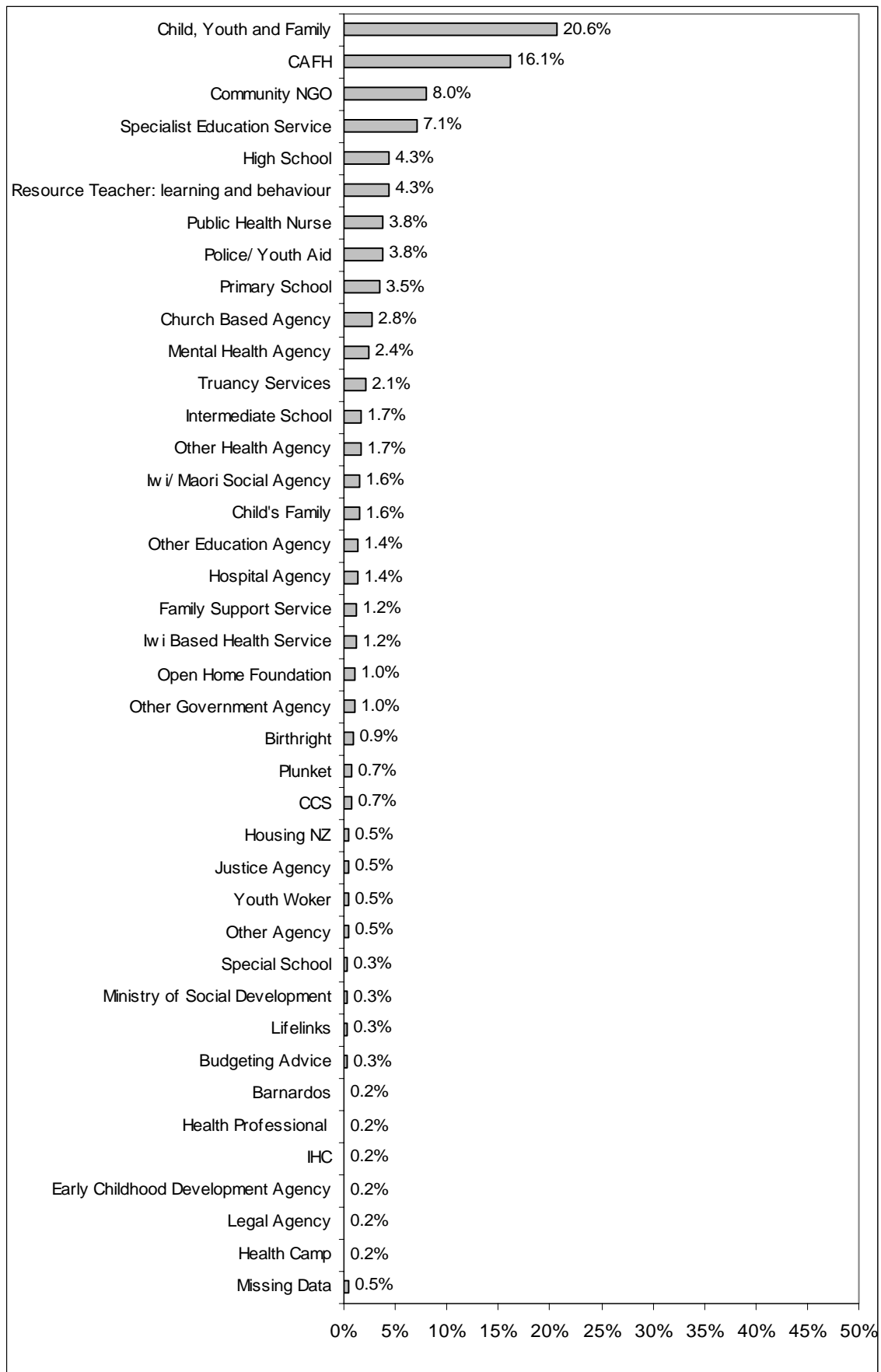
<b>Local Management Group Area</b>	<b>No. of Meetings Held in this Area</b>
Canterbury	92
Waitakere	70
Auckland	54
South Auckland <i>Otahuhu/ Papatoetoe (15)</i> <i>Franklin/ Pukekohe (9)</i> <i>Manurewa/ Clendon (7)</i> <i>Papakura (6)</i> <i>Mangere (6)</i> <i>Otara (4)</i> <i>Howick/ Pakuranga (4)</i>	51
Hastings/ Napier	29
South Canterbury (Timaru)	28
Dunedin	24
Taranaki	24
Tauranga	16
Taumarunui	15
Nelson/ Tasman	14
Hamilton	13
Thames/ Coromandel	12
Palmerston North	11
Kapiti	10
Invercargill/ Southland	10
Wanganui	10
Hibiscus Coast	8
Horowhenua (Levin)	7
Porirua	6
Manawatu (Fielding)	6
Central Hawkes Bay	5
Wellington	5
Tararua (Dannevirke)	5
Hutt Valley	5
Clutha (South Otago)	5
Whakatane	4
Buller/ Westland	4
Far North (Kaitia)	4
Kaipara (Dargaville)	4
Waihi/ Whangamata	3
South Waikato/ Tokoroa	3
Mid Canterbury	2
Taupo/ Turangi	2
Whakatane	2

\* Table continued on page 3

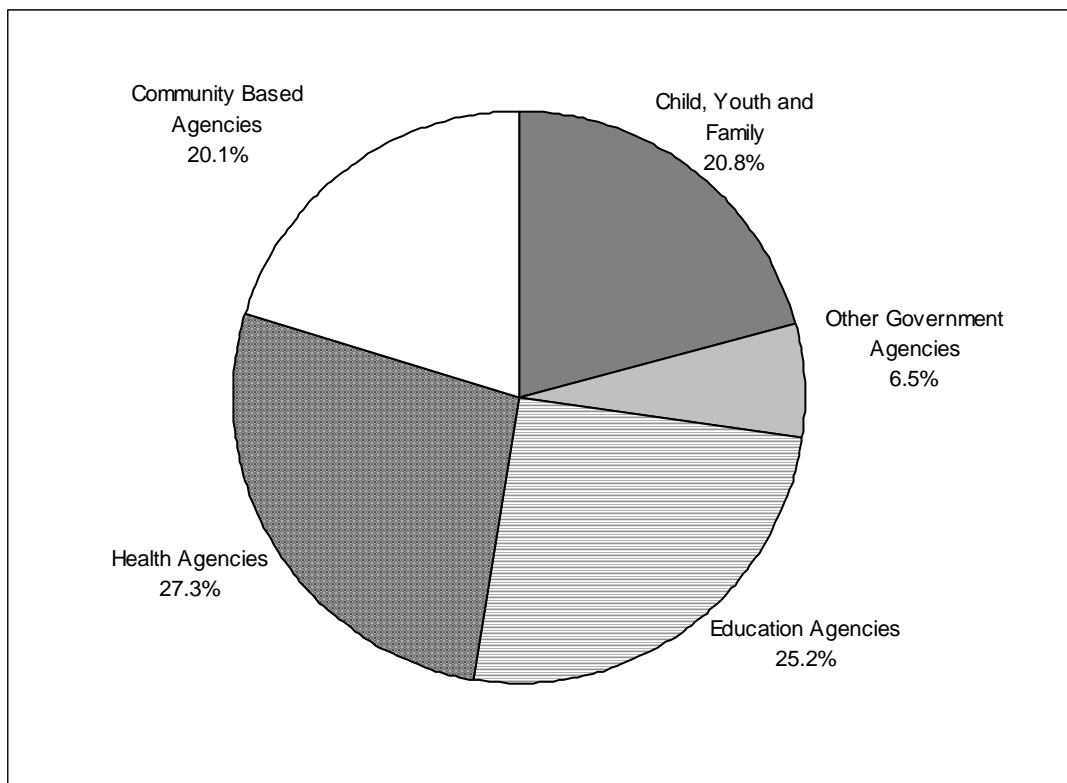
**Table 1 Continued**

<b>Local Management Group Area</b>	<b>No. of Meetings Held in this Area</b>
Kaikohe	2
Kawerau	2
North Shore	2
Whitianga	2
Rotorua	1
Opotiki	1
Waitaki (Oamaru)	1
Kerikeri	1
Ngaruawahia	1
Gisborne	1
<b>TOTAL</b>	<b>577</b>

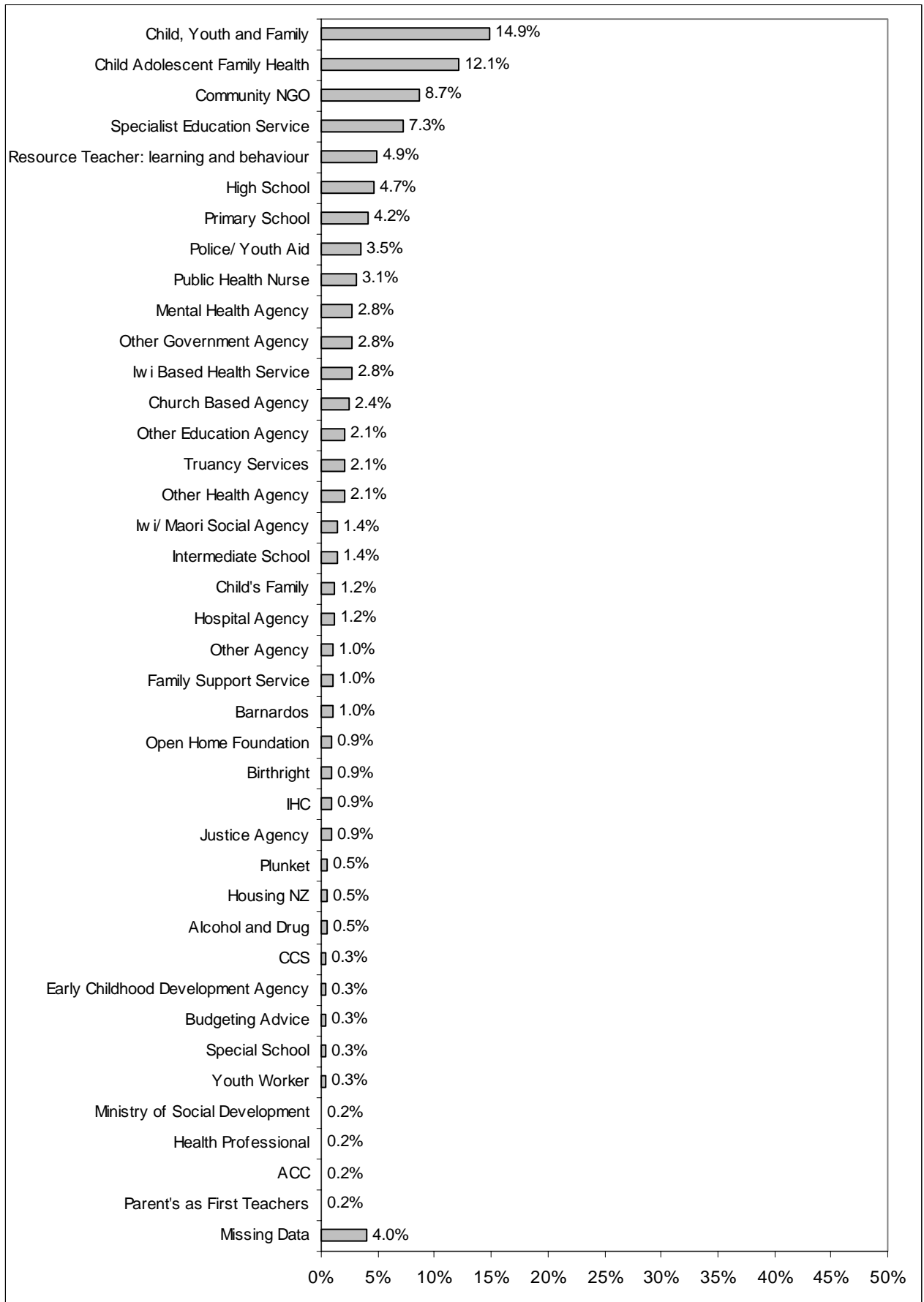
**Figure 2: Interim Lead Agency: National Figures  
(Based on 577 initial meetings conducted Jul - Dec 2001)**



**Figure 3: Interim Lead Agency: Sector Source of Referrals  
(Based on 577 initial meetings conducted Jul - Dec 2001)**



**Figure 4: Lead Agency: National Figures**  
**(Based on 577 initial meetings conducted Jul - Dec 2001)**



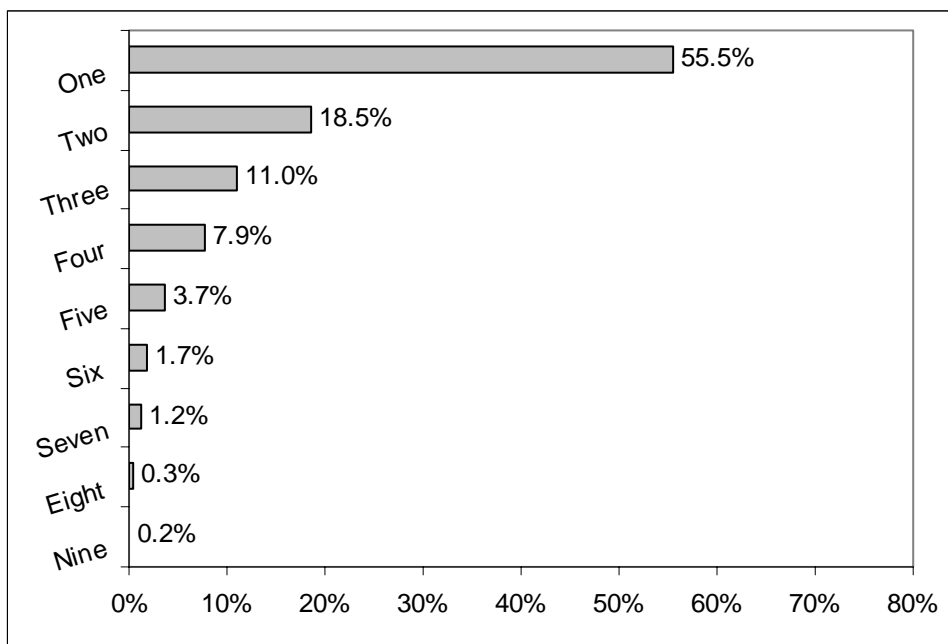
**Table 2: Agencies Attending Meeting: National Figures**  
(Based on 577 initial meetings conducted Jul - Dec 2001)

Agency	No. of meetings Agency Attended	No. of meetings agency was invited to but did not attend
Child, Youth and Family	255	40
Child Adolescent Family Health	210	29
Primary School	205	8
Specialist Education Service	180	13
Community NGO	179	31
High School	139	9
Resource Teacher: learning and behaviour	115	12
Other Health Agency	98	27
Work and Income New Zealand	88	19
Mental Health Agency	85	17
Police/ Youth Aid	80	20
Public Health Nurse	73	17
Intermediate School	70	7
Church Based Agency	70	6
Health Professional	52	51
Iwi/ Maori Social Agency	50	13
Iwi Based Health Service	43	9
Other Education Agency	43	6
Housing NZ	38	8
Hospital Agency	36	7
Truancy Services	36	4
Legal Agency	33	6
Barnardos	30	4
Family Support Service	30	1
Plunket	27	7
Open Home Foundation	25	4
Birthright	21	0
Early Childhood	20	3
Other Government Agency	18	6
Ministry of Education	18	3
IHC	17	1
Lifelinks	15	9
Youth Worker	15	1
Budget Advice	14	5
ACC	12	3
Alcohol & Drug	11	2
CCS	11	0
Special Needs School	10	1
Justice Agency	9	4
Health Camp	6	1
Parents as First Teachers	4	2

**Table 3: Size of Meeting: National Figures**  
 (Based on 577 initial meetings conducted Jul - Dec 2001)

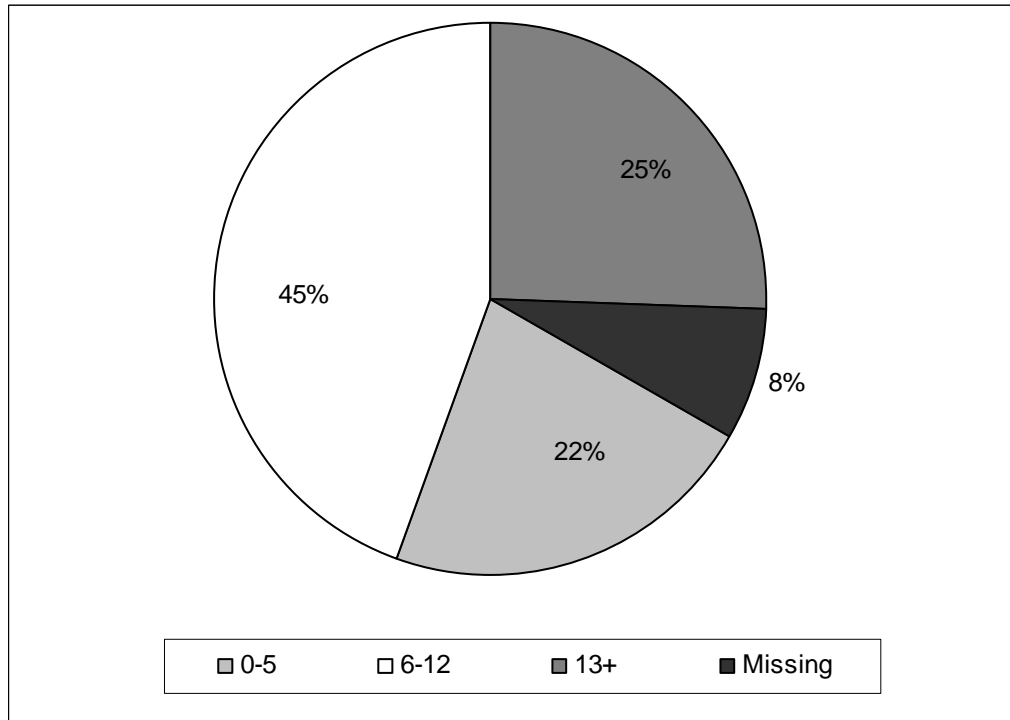
Average number of agencies invited:	5.16
Average number of agencies present:	4.41
Average number of agencies invited but not present:	0.76
Maximum number of agencies present:	12
Minimum number of agencies present:	1

**Figure 5: Number of children subject of case conference: National Figures**  
 (Based on 577 initial meetings conducted Jul - Dec 2001)



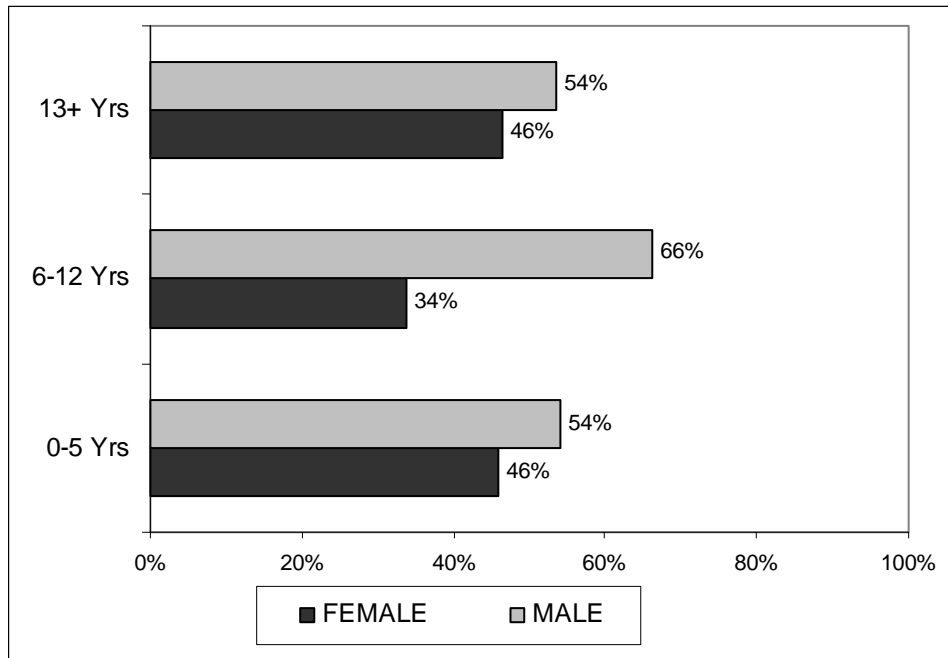
***Whanau/ family of children attended 94% of meetings***  
 (Based on 1141 children/ youth at 577 initial meetings conducted July – December 2001)

**Figure 6: Age of children subject of case conference:  
National Figures**  
(Based on 1141 children/ youth at 577 initial meetings  
conducted Jul – Dec 2001)

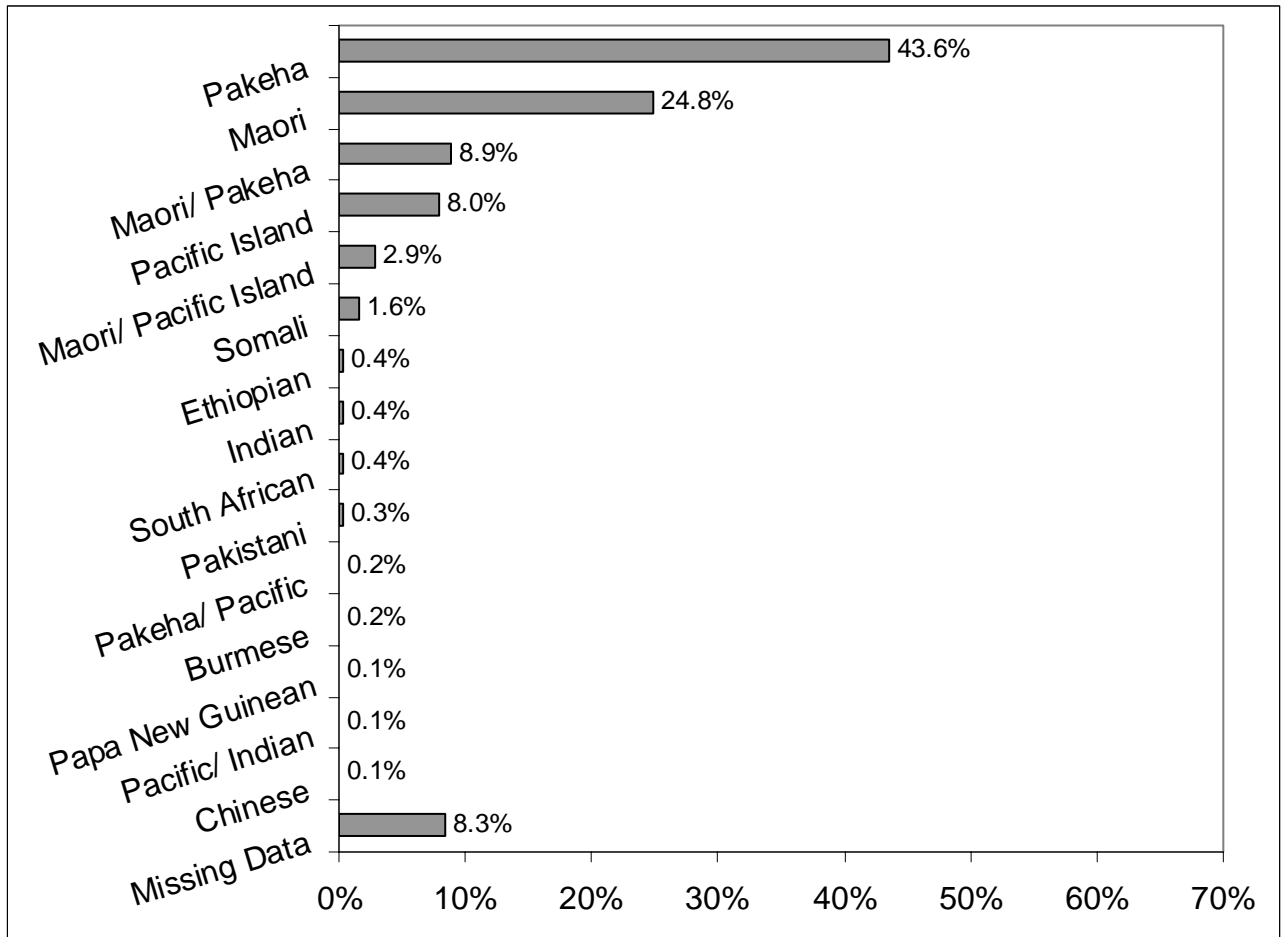


**37.9% of children were female, and 62.1% were male**  
(Based on 1141 children/ youth at 577 initial meetings  
conducted July – December 2001)

**Figure 7: Age by gender of children subject of case conference: National Figures**  
(Based on 1141 children/ youth at 577 initial meetings conducted Jul – Dec 2001)



**Figure 8: Ethnicity of children subject of case conference:  
National Figures**  
(Based on 1141 children/ youth at 577 initial meetings  
conducted Jul – Dec 2001)



## Appendix 1: Acronyms, Abbreviations and Terms used in Report:

ABBREVIATION	NAME	DETAILS
<b>Government Agencies</b>		
CYF	Department of Child, Youth and Family Services	Also referred to as 'Child, Youth and Family'
POLICE/ YA	NZ Police/ Youth Aid	
MSD	Ministry of Social Development	Previously Department of Work and Income (DWI)
HNZ	Housing New Zealand	
ACC	Accident Compensation Corporation	
MOE	Ministry of Education	
LEGAL	Legal	Counsel for the Child Lawyer
JUSTICE	Justice	Youth Justice Community Correction/ Probation Prisons
<b>Education Agencies</b>		
SES	Specialist Education Services	
RTL B	Resource Teacher: Learning and Behaviour	
<b>Health Agencies</b>		
PHN	Public Health Nurse	Public Health/ Wellchild Services
CAFH	Child, Adolescent Family Health	<b><i>Any health/ mental health service that caters for child, family or youth</i></b> E.g. CAF, YSS (Youth Speciality Service), CAMHS, CAFT, CYMH, Child and Adolescent Unit, CAMS, Youth Wellness Centre etc.
<b>Community NGO = Non Government Organisation</b>		
<b>'Other' categories</b>		
Other Government Agency	Eg. IRD, HFA, NZ Fire Service, NZIS	
Other Education Agency	e.g. REAP, Social Workers in Schools	
Other Health Agency	<i>All other health agencies, e.g. Community Health, Newtown Union Health Service</i>	
Other Agency	<i>All agencies that cannot be further classified.</i>	